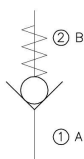




VALVOLE
DI BLOCCO

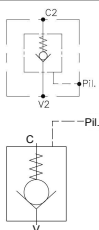
CHECK
VALVES





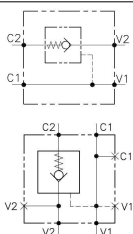
VALVOLE A CARTUCCIA
CARTRIDGE VALVES

p. 172-191



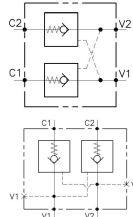
VALVOLE A CARTUCCIA PILOTATE
CARTRIDGE PILOT VALVES

p. 192-201



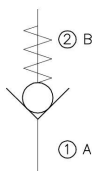
VALVOLE CON COLLETTORE A SEMPLICE EFFETTO
VALVES WITH SINGLE ACTING BODY

p. 202-209



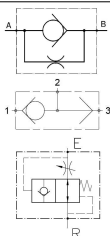
VALVOLE CON COLLETTORE A DOPPIO EFFETTO
VALVES WITH DOUBLE ACTING BODY

p. 210-229



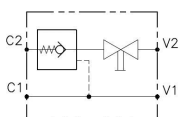
VALVOLE DI BLOCCO AD INSERTO
INSERT-TYPE CHECK VALVES

p. 230-235



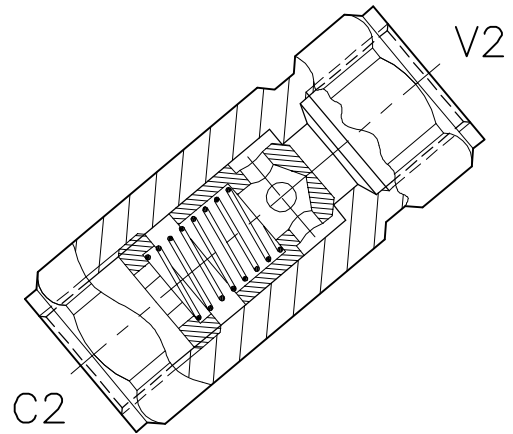
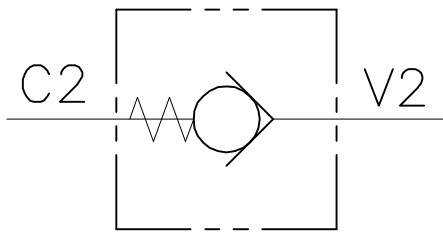
VALVOLE CON FUNZIONE SPECIALE
SPECIAL FUNCTION VALVES

p. 236-243



VALVOLE CON RUBINETTO DI SICUREZZA
VALVES WITH MANUAL SHUT-OFF

p. 244-245



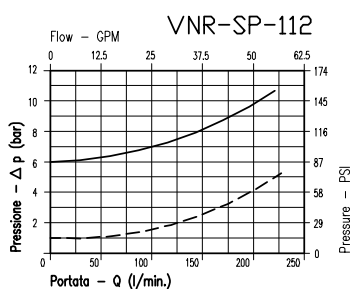
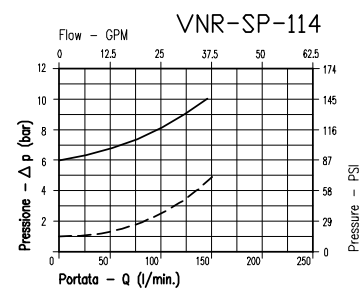
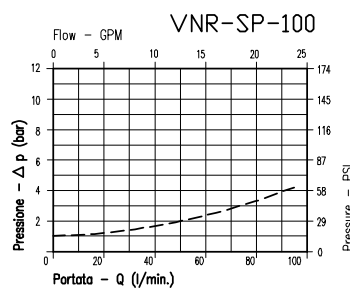
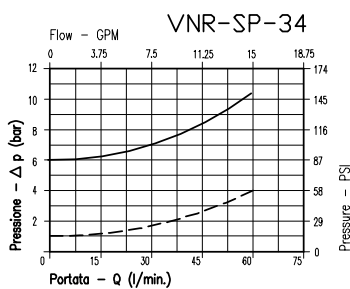
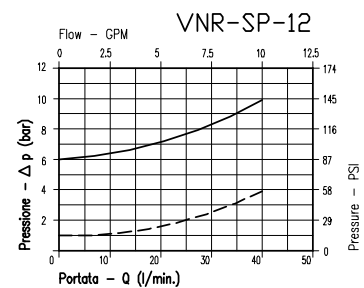
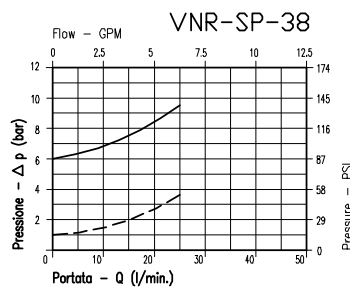
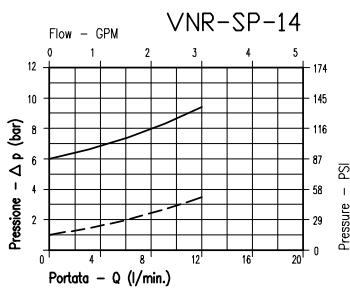
CARATTERISTICHE

Luce nominale
 Portata max
 Pressione di lavoro max
 Temperatura ambiente
 Temperatura olio
 Filtraggio consigliato
 Peso

Vedi pag. successiva / See next page
Vedi pag. successiva / See next page
250 / 350
-30°C + 50°C
-30°C + 80°C
30+60
Vedi pag. successiva / See next page

PERFORMANCE

Rated size
 Max flow-rate
 Max working pressure
 Room temperature
 Oil temperature
 Recommended filtration
 Weight

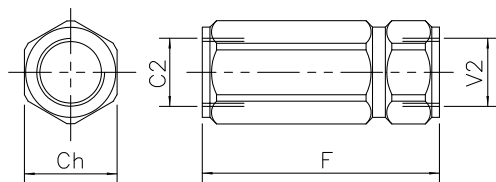


———— VNR/SP-... 6÷8 Bar
 - - - - VNR/SP-... 1 Bar

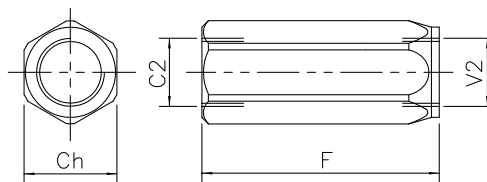
Viscosità olio 46 cSt a 50°C
Oil viscosity 46 cSt at 50°C

VALVOLA DI BLOCCO CON TENUTA A SPILLO
CHECK VALVE, POPPET TYPE

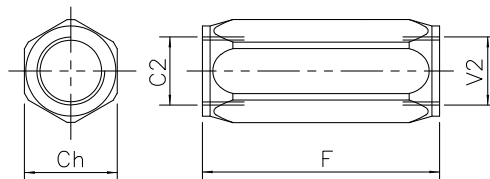
(1/4" - 3/8" - 3/4" - 1")



(1/2" - 1"1/4)



(1"1/2)

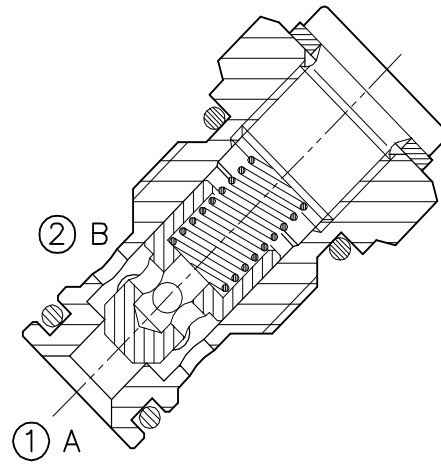
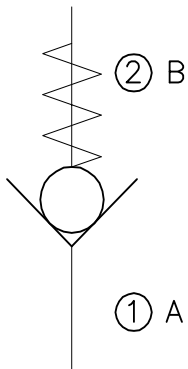


DIMENSIONI
DIMENSIONS

| NUMERO VALVOLA VALVE NUMBER | CH | F | Attacchi Port size V2-C2 GAS (BSPP) | Luce nominale rated size DN | Portata max Max flow-rate | Peso Weight kg |
|-----------------------------------|----|-----|--|--------------------------------------|------------------------------|----------------------|
| | | | | | l/min | |
| 016 | 19 | 57 | 1/4" | 6 | 20 | 0,10 |
| 017 | 24 | 61 | 3/8" | 8 | 40 | 0,16 |
| 018 | 27 | 75 | 1/2" | 11 | 60 | 0,31 |
| 019 | 36 | 92 | 3/4" | 16 | 60 | 0,50 |
| 020 | 41 | 110 | 1" | 20 | 120 | 0,75 |
| 001 | 55 | 135 | 1"1/4 | 25 | 160 | 1,75 |
| 002 | 60 | 135 | 1"1/2 | 30 | 250 | 1,90 |

CODICE DI ORDINAZIONE
HOW TO ORDER

| | | | | |
|-----|-------------------------------|---|--------------------------------------|---|
| 003 | 016 | 0 | J | 0 |
| | Numero valvola / Valve number | | Inizio apertura Cracking pressure | |
| | 016 | | J | 1 bar Molla (colore nero) Spring (black) |
| | 017 | | | |
| | 018 | | | |
| | 019 | | | |
| | 020 | | | |
| | 001 | | | |
| | 002 | | W | 6-8 bar Molla (colore giallo) Spring (yellow) |

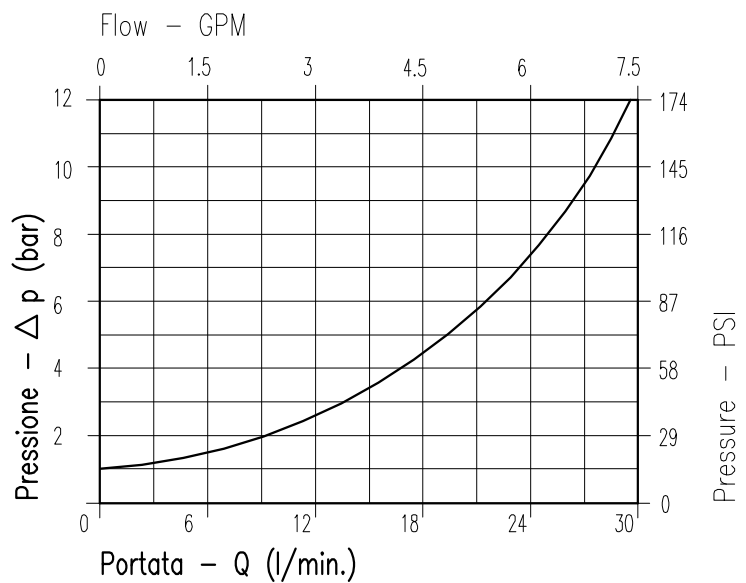


CARATTERISTICHE

| | |
|--------------------------|----------------------------------|
| Luce nominale | DN 6 |
| Portata min/max | 1/30 l/min - 0.26/7.9 GPM |
| Pressione di lavoro max. | 350 bar - 5075 PSI |
| Temperatura ambiente | -30°C + 50°C |
| Temperatura olio | -30°C + 80°C |
| Filtraggio consigliato | 50 micron |
| Coppia di serraggio | 50÷59 Nm |
| Peso | 0.077 Kg |

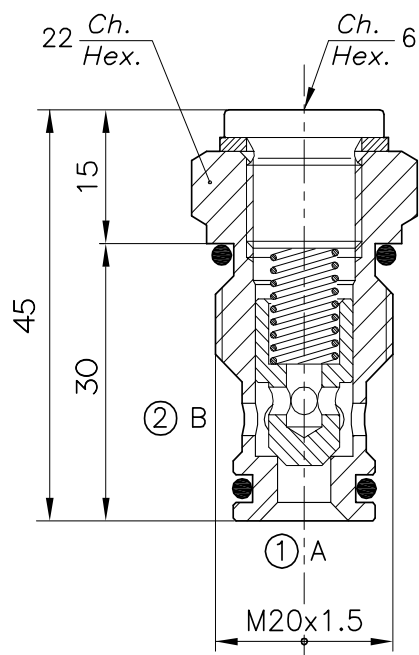
PERFORMANCE

| |
|------------------------|
| Rated size |
| Min/max flow-rate |
| Max working pressure |
| Room temperature |
| Oil temperature |
| Recommended filtration |
| Tightening torque |
| Weight |

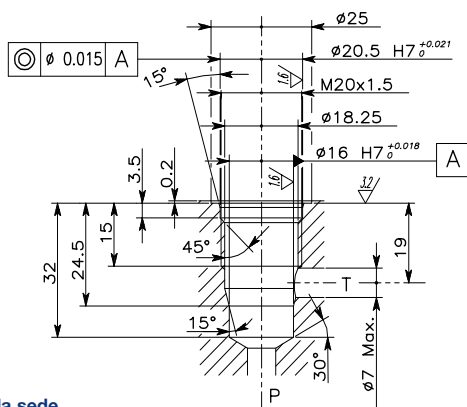


Viscosità olio 46 cSt a 50°C
Oil viscosity 46 cSt at 50°C

VALVOLA DI BLOCCO A CARTUCCIA
CARTRIDGE CHECK VALVE



CAVITA' CAVITY CE.013.L



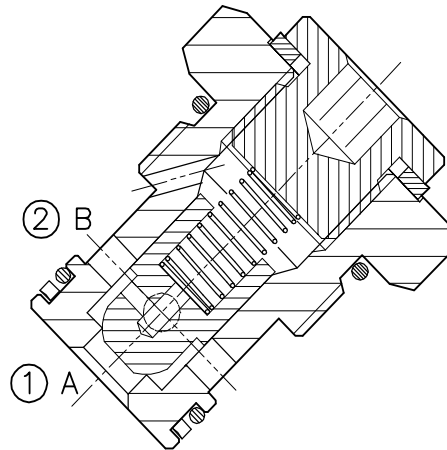
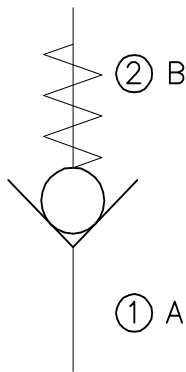
Si raccomanda l'esatta esecuzione della sede
 The valve seat should be perfectly tooled

CODICE DI ORDINAZIONE
HOW TO ORDER

003 006 0 J 0

| | |
|---|---|
| | Inizio apertura Cracking pressure |
| J | 1 bar Molla (colore nero) Spring (black) |
| W | 6÷8 bar Molla (colore giallo) Spring (yellow) |

VNR-CS-M22X1.5-....

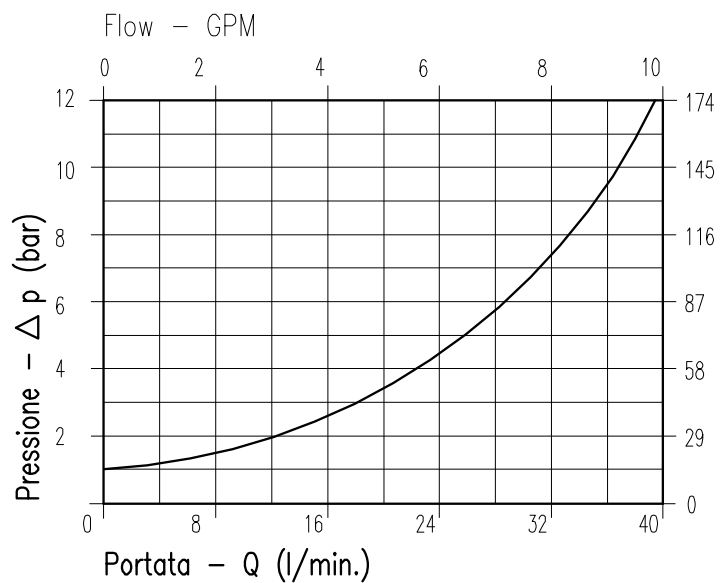


CARATTERISTICHE

| | |
|--------------------------|----------------------------------|
| Luce nominale | DN 6 |
| Portata min/max | 1/30 l/min - 0.26/7.9 GPM |
| Pressione di lavoro max. | 350 bar - 5075 PSI |
| Temperatura ambiente | -30°C + 50°C |
| Temperatura olio | -30°C + 80°C |
| Filtraggio consigliato | 50 micron |
| Coppia di serraggio | 75÷87 Nm |
| Peso | 0.100 Kg |

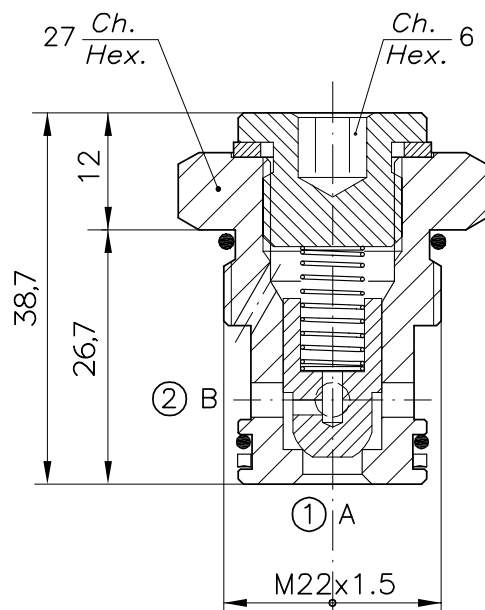
PERFORMANCE

| |
|------------------------|
| Rated size |
| Min/max flow-rate |
| Max working pressure |
| Room temperature |
| Oil temperature |
| Recommended filtration |
| Tightening torque |
| Weight |

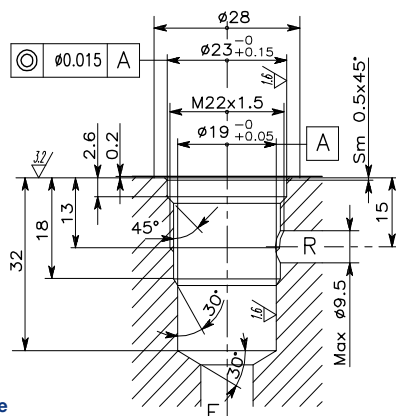


Viscosità olio 46 cSt a 50°C
Oil viscosity 46 cSt at 50°C

VALVOLA DI BLOCCO A CARTUCCIA
CARTRIDGE CHECK VALVE



CAVITA'
CAVITY **CE.014.N**



Si raccomanda l'esatta esecuzione della sede
 The valve seat should be perfectly tooled

CODICE DI ORDINAZIONE
HOW TO ORDER

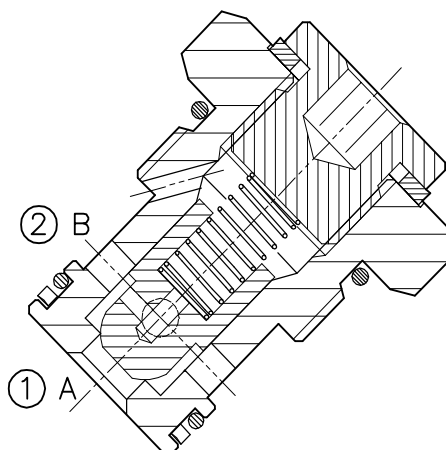
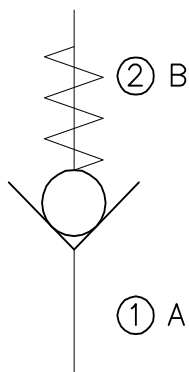
003 034 0 J 0

Inizio apertura
 Cracking pressure

J 1 bar
 Molla (colore nero)
 Spring (black)

W 6÷8 bar
 Molla (colore giallo)
 Spring (yellow)

VNR-CS-78UNF-...



CARATTERISTICHE

Luce nominale
 Portata min/max
 Pressione di lavoro max.
 Temperatura ambiente
 Temperatura olio
 Filtraggio consigliato
 Coppia di serraggio
 Peso

DN 6

1/30 l/min - 0.26/7.9 GPM

350 bar - 5075 PSI

-30°C + 50°C

-30°C + 80°C

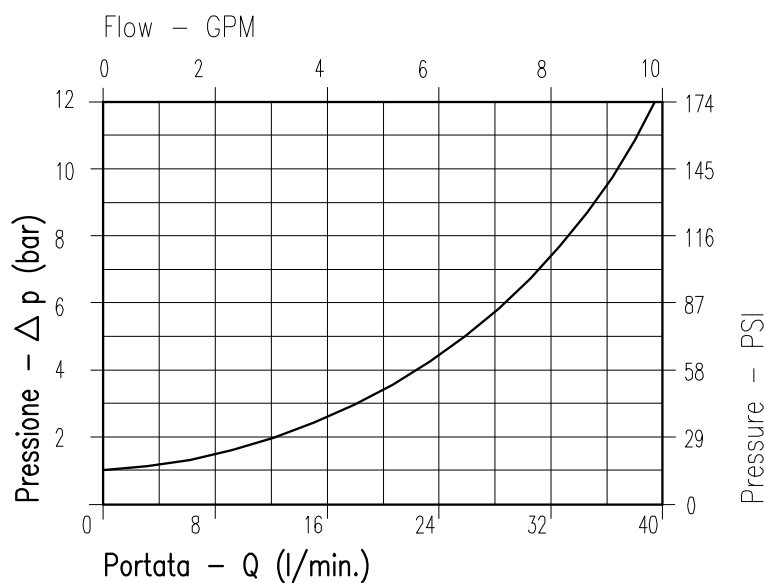
50 micron

75÷87 Nm

0.100 Kg

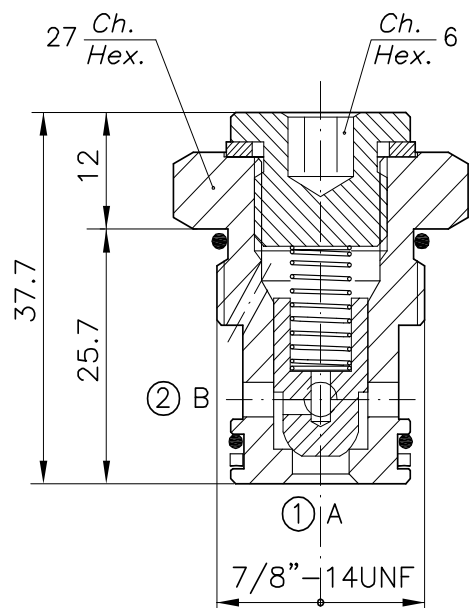
PERFORMANCE

Rated size
 Min/max flow-rate
 Max working pressure
 Room temperature
 Oil temperature
 Recommended filtration
 Tightening torque
 Weight

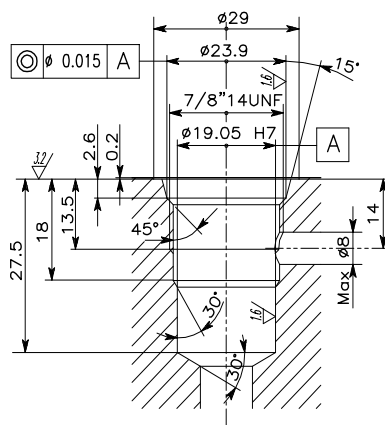


Viscosità olio 46 cSt a 50°C
Oil viscosity 46 cSt at 50°C

VALVOLA DI BLOCCO A CARTUCCIA
CARTRIDGE CHECK VALVE



CAVITA'
CAVITY **CE.015.N**



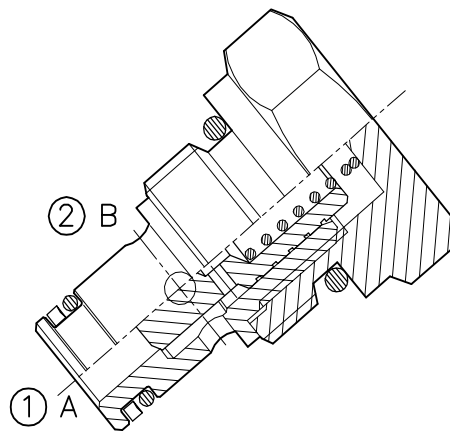
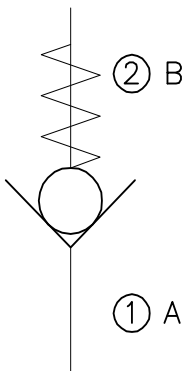
Si raccomanda l'esatta esecuzione della sede
 The valve seat should be perfectly tooled

CODICE DI ORDINAZIONE
HOW TO ORDER

003 007 0 J 0

| Inizio apertura Cracking pressure | |
|--------------------------------------|---|
| J | 1 bar Molla (colore nero) Spring (black) |
| W | 6÷8 bar Molla (colore giallo) Spring (yellow) |

VNR-C-40-011-N-34UNF-...

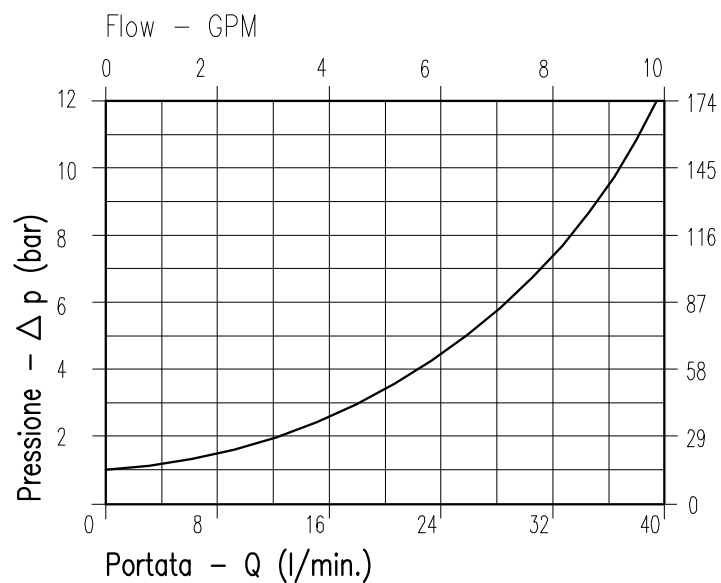


CARATTERISTICHE

| | |
|--------------------------|-----------------------------------|
| Luce nominale | DN 6 |
| Portata min/max | 1/40 l/min - 0.26/10.6 GPM |
| Pressione di lavoro max. | 350 bar - 5075 PSI |
| Temperatura ambiente | -30°C + 50°C |
| Temperatura olio | -30°C + 80°C |
| Filtraggio consigliato | 50 micron |
| Coppia di serraggio | 75±87 Nm |
| Peso | 0.069 Kg |

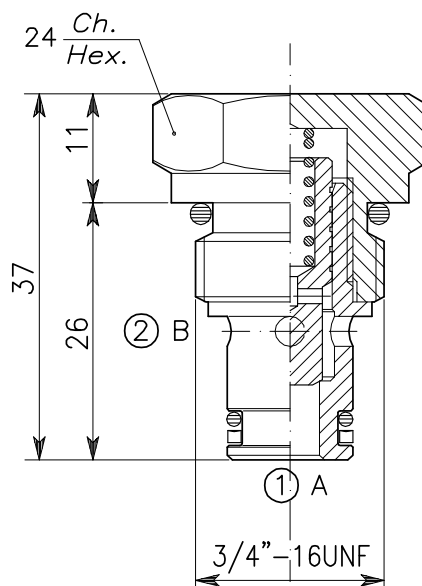
PERFORMANCE

| |
|------------------------|
| Rated size |
| Min/max flow-rate |
| Max working pressure |
| Room temperature |
| Oil temperature |
| Recommended filtration |
| Tightening torque |
| Weight |

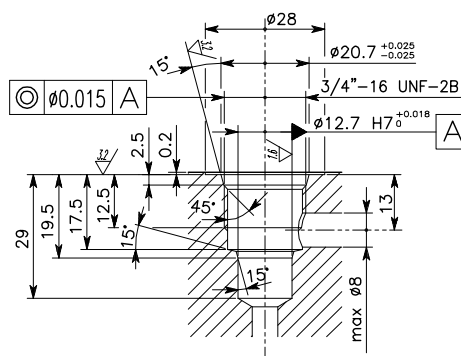


Viscosità olio 46 cSt a 50°C
Oil viscosity 46 cSt at 50°C

VALVOLA DI BLOCCO A CARTUCCIA
CARTRIDGE CHECK VALVE



CAVITA' CE.011.N
CAVITY



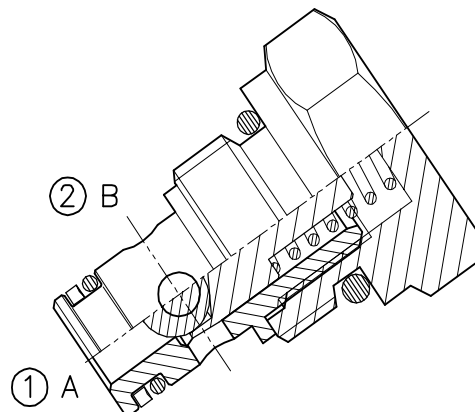
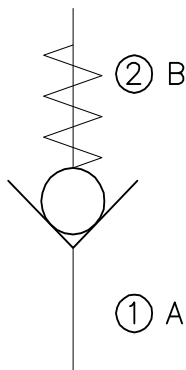
Si raccomanda l'esatta esecuzione della sede
 The valve seat should be perfectly tooled

CODICE DI ORDINAZIONE
HOW TO ORDER

003 014 0 J 0

| Inizio apertura Cracking pressure | |
|--------------------------------------|---|
| J | 1 bar Molla (colore nero) Spring (black) |
| W | 6÷8 bar Molla (colore giallo) Spring (yellow) |

VNR-C-40-011N-34UNF-SF-...

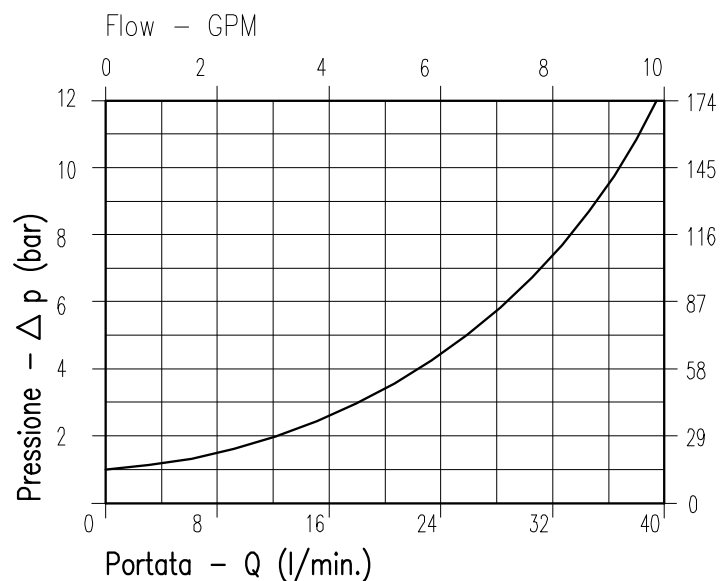


CARATTERISTICHE

| | |
|--------------------------|-----------------------------------|
| Luce nominale | DN 6 |
| Portata min/max | 1/40 l/min - 0.26/10.6 GPM |
| Pressione di lavoro max. | 350 bar - 5075 PSI |
| Temperatura ambiente | -30°C + 50°C |
| Temperatura olio | -30°C + 80°C |
| Filtraggio consigliato | 50 micron |
| Coppia di serraggio | 75±87 Nm |
| Peso | 0.069 Kg |

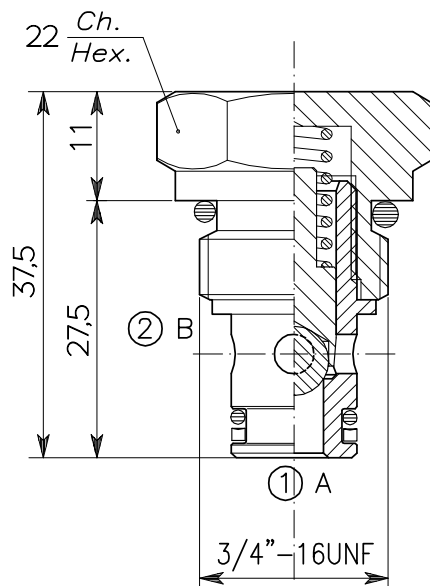
PERFORMANCE

| |
|------------------------|
| Rated size |
| Min/max flow-rate |
| Max working pressure |
| Room temperature |
| Oil temperature |
| Recommended filtration |
| Tightening torque |
| Weight |

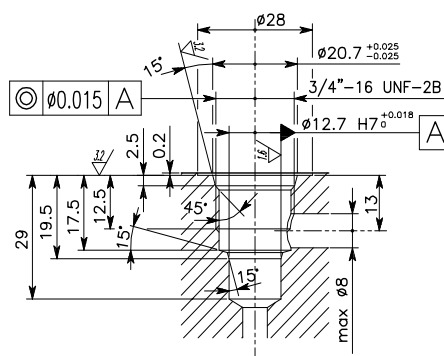


Viscosità olio 46 cSt a 50°C
Oil viscosity 46 cSt at 50°C

VALVOLA DI BLOCCO A CARTUCCIA
CARTRIDGE CHECK VALVE



CAVITA'
CAVITY **CE.011.N**



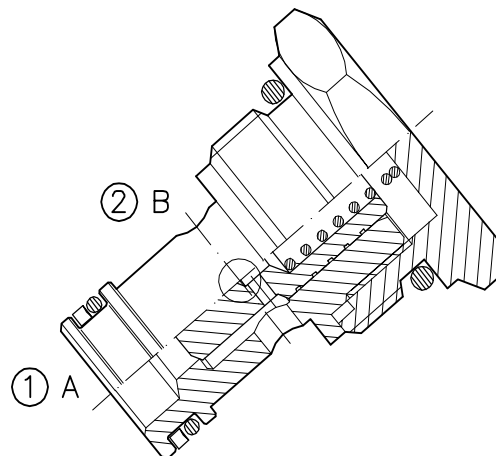
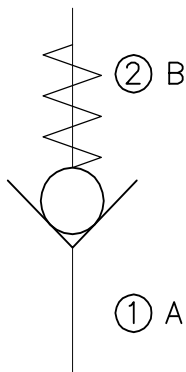
Si raccomanda l'esatta esecuzione della sede
 The valve seat should be perfectly tooled

CODICE DI ORDINAZIONE
HOW TO ORDER

003 321 0 J 0

| Inizio apertura Cracking pressure | |
|--------------------------------------|---|
| J | 1 bar Molla (colore nero) Spring (black) |
| W | 6-8 bar Molla (colore giallo) Spring (yellow) |

VNR-C-50-020N-78UNF-...

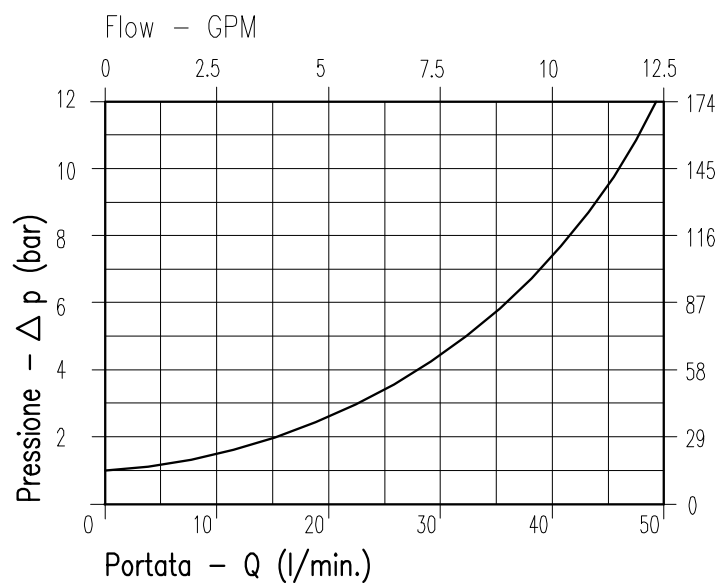


CARATTERISTICHE

| | |
|--------------------------|-----------------------------------|
| Luce nominale | DN 8 |
| Portata min/max | 1/50 l/min - 0.26/13.2 GPM |
| Pressione di lavoro max. | 350 bar - 5075 PSI |
| Temperatura ambiente | -30°C + 50°C |
| Temperatura olio | -30°C + 80°C |
| Filtraggio consigliato | 50 micron |
| Coppia di serraggio | 75÷87 Nm |
| Peso | 0.077 Kg |

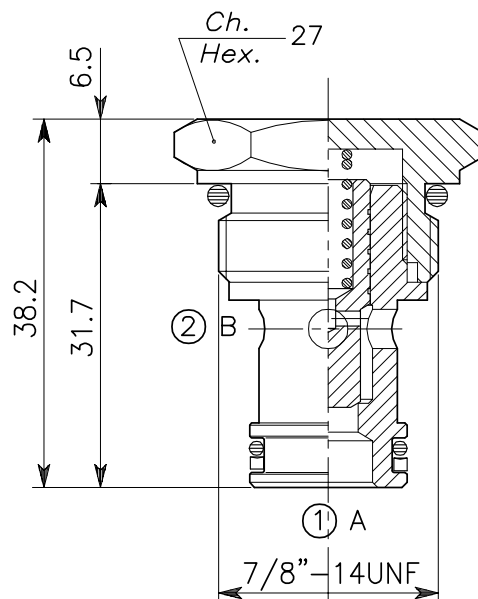
PERFORMANCE

| |
|------------------------|
| Rated size |
| Min/max flow-rate |
| Max working pressure |
| Room temperature |
| Oil temperature |
| Recommended filtration |
| Tightening torque |
| Weight |

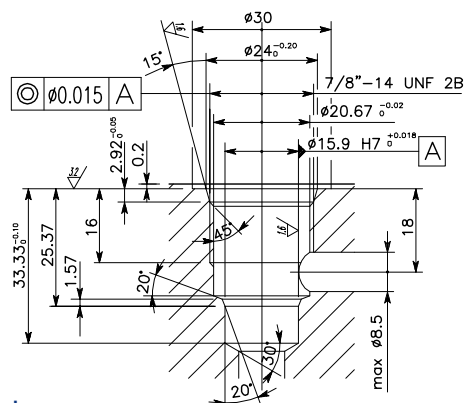


Viscosità olio 46 cSt a 50°C
Oil viscosity 46 cSt at 50°C

VALVOLA DI BLOCCO A CARTUCCIA
CARTRIDGE CHECK VALVE



CAVITA'
CAVITY **CE.020.N**



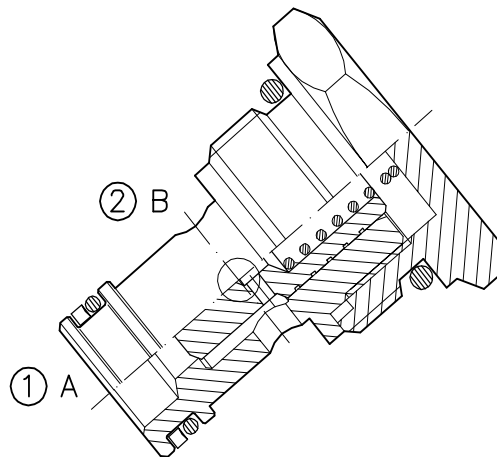
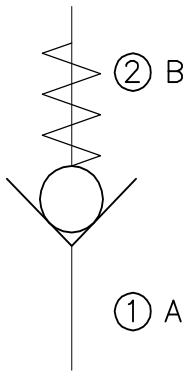
Si raccomanda l'esatta esecuzione della sede
 The valve seat should be perfectly tooled

CODICE DI ORDINAZIONE
HOW TO ORDER

003 012 0 J 0

| | |
|--------------------------------------|---|
| Inizio apertura Cracking pressure | |
| J | 1 bar Molla (colore nero) Spring (black) |
| W | 6÷8 bar Molla (colore giallo) Spring (yellow) |

VNR-C-50-HD-78UNF

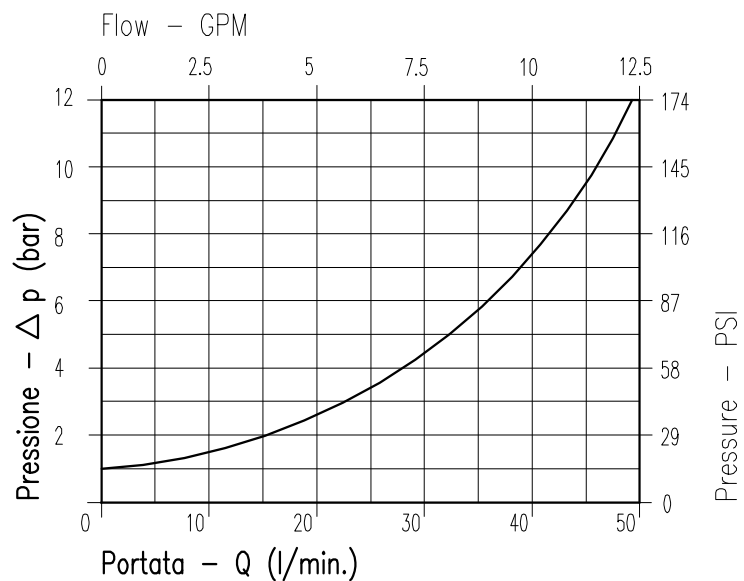


CARATTERISTICHE

| | |
|--------------------------|-----------------------------------|
| Luce nominale | DN 8 |
| Portata min/max | 1/50 l/min - 0.26/13.2 GPM |
| Pressione di lavoro max. | 350 bar - 5075 PSI |
| Temperatura ambiente | -30°C + 50°C |
| Temperatura olio | -30°C + 80°C |
| Filtraggio consigliato | 50 micron |
| Coppia di serraggio | 75÷87 Nm |
| Peso | 0.077 Kg |

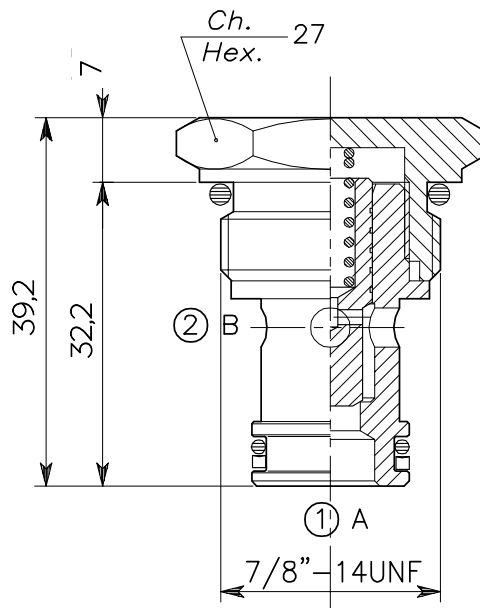
PERFORMANCE

| |
|------------------------|
| Rated size |
| Min/max flow-rate |
| Max working pressure |
| Room temperature |
| Oil temperature |
| Recommended filtration |
| Tightening torque |
| Weight |

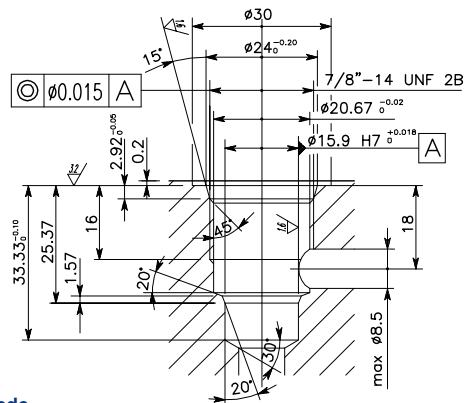


Viscosità olio 46 cSt a 50°C
Oil viscosity 46 cSt at 50°C

VALVOLA DI BLOCCO A CARTUCCIA
CARTRIDGE CHECK VALVE



CAVITA' CAVITY CE.020.N

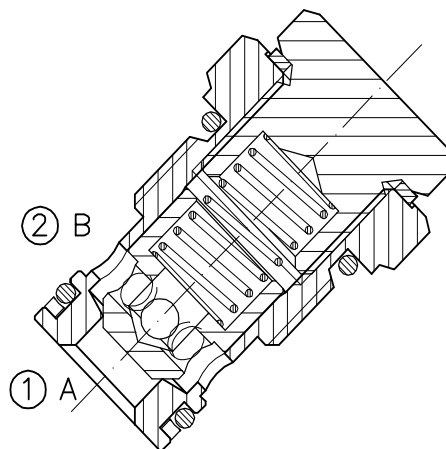
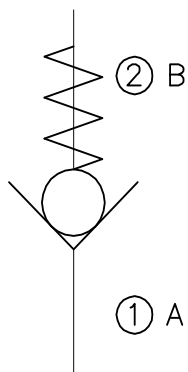


Si raccomanda l'esatta esecuzione della sede
 The valve seat should be perfectly tooled

CODICE DI ORDINAZIONE
HOW TO ORDER

003 373 0 J 0

| | |
|---|---|
| | Inizio apertura Cracking pressure |
| J | 1 bar Molla (colore nero) Spring (black) |
| W | 5 bar Molla (colore giallo) Spring (yellow) |

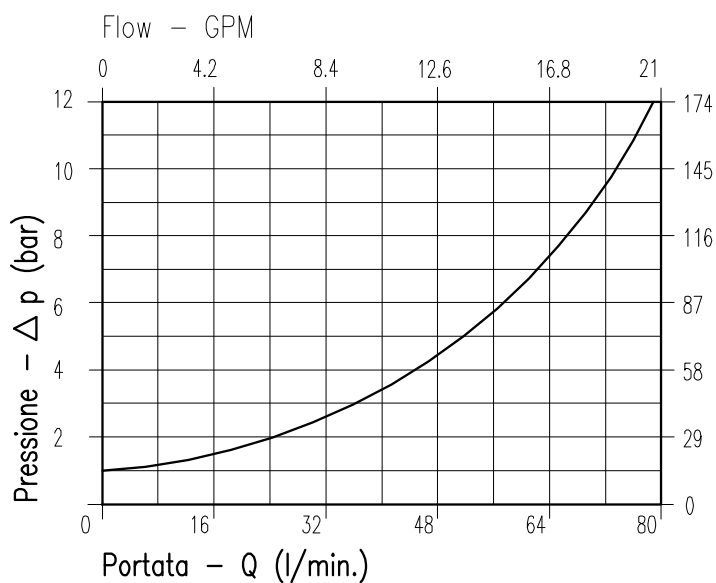


CARATTERISTICHE

| | |
|--------------------------|-----------------------------------|
| Luce nominale | DN 12 |
| Portata min/max | 1/80 l/min - 0.26/21.1 GPM |
| Pressione di lavoro max. | 350 bar - 5075 PSI |
| Temperatura ambiente | -30°C + 50°C |
| Temperatura olio | -30°C + 80°C |
| Filtraggio consigliato | 50 micron |
| Coppia di serraggio | 145÷158 Nm |
| Peso | 0.179 Kg |

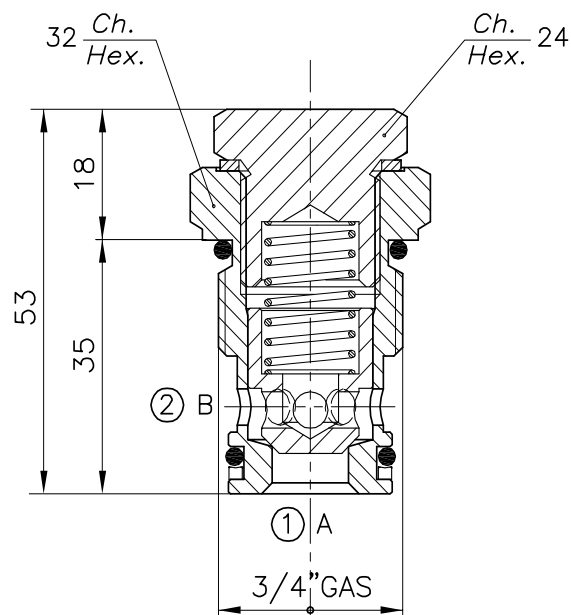
PERFORMANCE

| |
|------------------------|
| Rated size |
| Min/max flow-rate |
| Max working pressure |
| Room temperature |
| Oil temperature |
| Recommended filtration |
| Tightening torque |
| Weight |

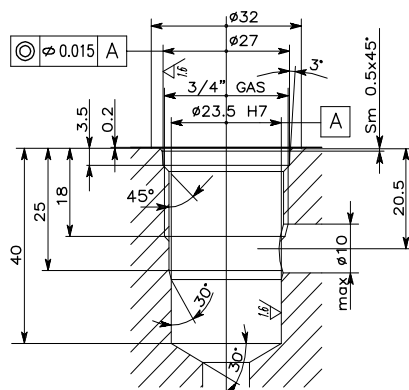


Viscosità olio 46 cSt a 50°C
Oil viscosity 46 cSt at 50°C

VALVOLA DI BLOCCO A CARTUCCIA
CARTRIDGE CHECK VALVE



CAVITA'
CAVITY CE.008.N

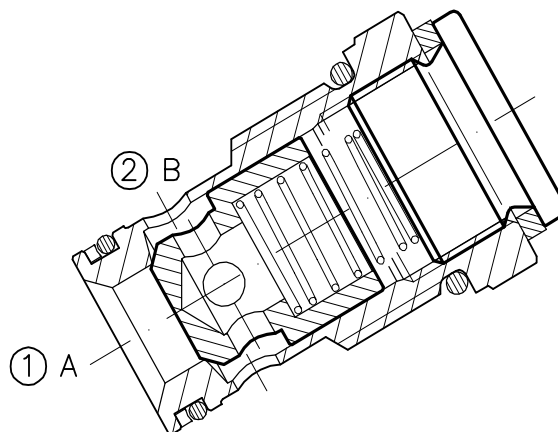
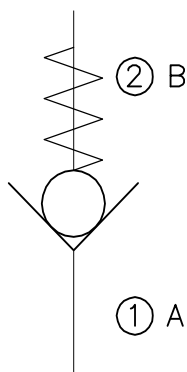


Si raccomanda l'esatta esecuzione della sede
 The valve seat should be perfectly tooled

CODICE DI ORDINAZIONE
HOW TO ORDER

003 035 0 J 0

| | |
|--------------------------------------|---|
| Inizio apertura Cracking pressure | |
| J | 1 bar Molla (colore nero) Spring (black) |
| W | 6÷8 bar Molla (colore giallo) Spring (yellow) |

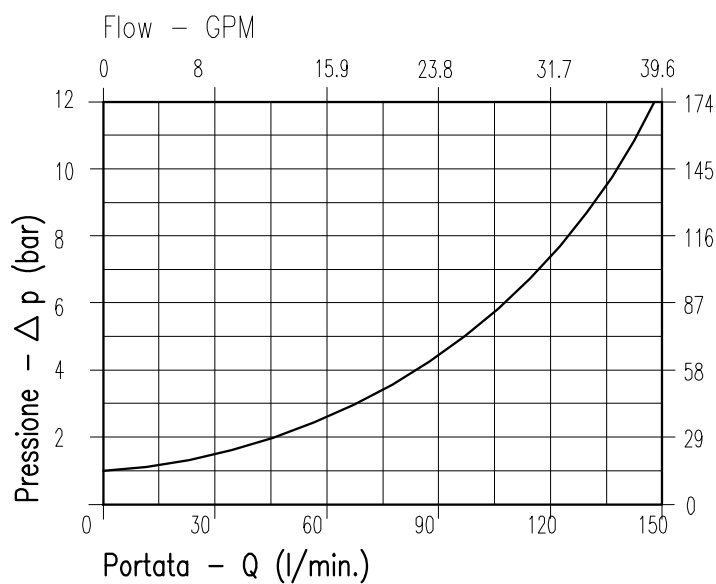


CARATTERISTICHE

| | |
|--------------------------|------------------------------------|
| Luce nominale | DN 16 |
| Portata min/max | 1/150 l/min - 0.26/39.6 GPM |
| Pressione di lavoro max. | 350 bar - 5075 PSI |
| Temperatura ambiente | -30°C + 50°C |
| Temperatura olio | -30°C + 80°C |
| Filtraggio consigliato | 50 micron |
| Coppia di serraggio | 148÷158 Nm |
| Peso | 0.292 Kg |

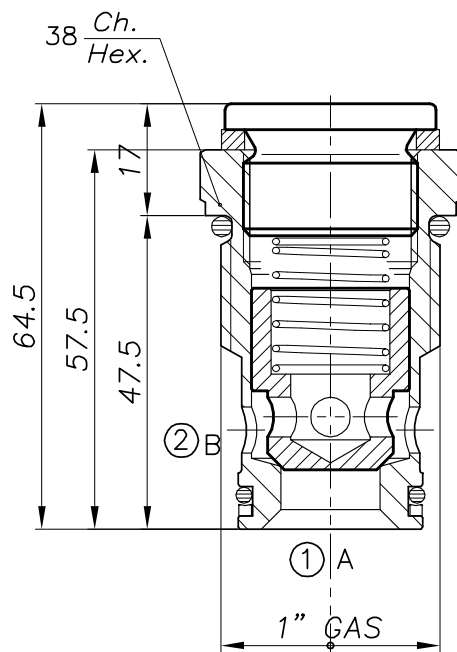
PERFORMANCE

| |
|------------------------|
| Rated size |
| Min/max flow-rate |
| Max working pressure |
| Room temperature |
| Oil temperature |
| Recommended filtration |
| Tightening torque |
| Weight |

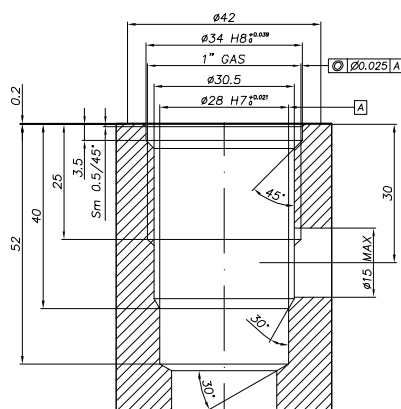


Viscosità olio 46 cSt a 50°C
Oil viscosity 46 cSt at 50°C

VALVOLA DI BLOCCO A CARTUCCIA
CARTRIDGE CHECK VALVE



CAVITA' CAVITY CE.065.N



Si raccomanda l'esatta esecuzione della sede
 The valve seat should be perfectly tooled

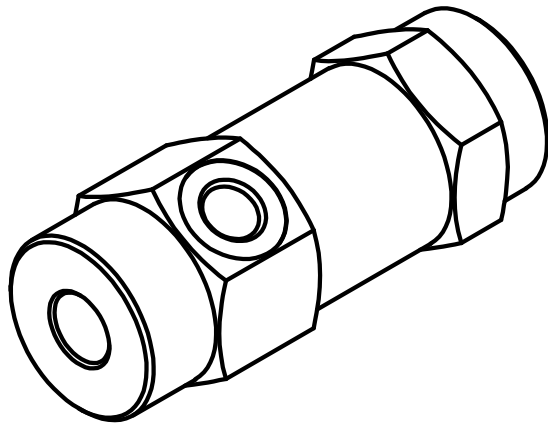
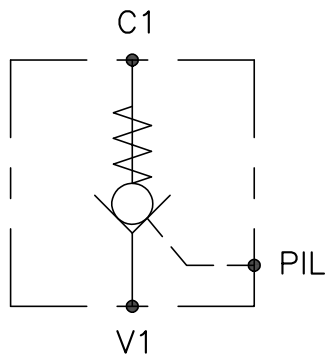
CODICE DI ORDINAZIONE
HOW TO ORDER

003 155 0 J 0

Inizio apertura
 Cracking pressure

J 1 bar
 Molle (colore nero)
 Spring (black)

W 6÷8 bar
 Molle (colore giallo)
 Spring (yellow)



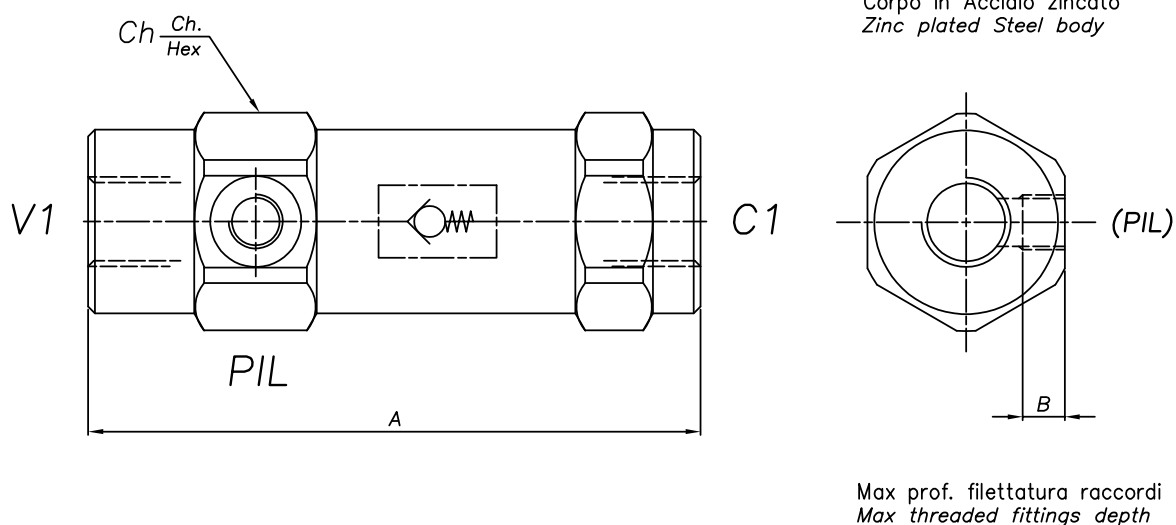
CARATTERISTICHE

| | |
|-------------------------|---------------------------|
| Luce nominale | 1/4" - 3/8" - 1/2" - 3/4" |
| Portata min/max | Vedi tabella/see table |
| Pressione max. di picco | Vedi tabella/see table |
| Temperatura ambiente | -30°C + 50°C |
| Temperatura olio | -30°C + 80°C |
| Filtraggio consigliato | 30 |
| Rapporto di pilotaggio | Vedi tabella/see table |
| Peso | Vedi tabella/see table |

PERFORMANCE

| |
|------------------------|
| Rated size |
| Min/max flow-rate |
| Max peak pressure |
| Room temperature |
| Oil temperature |
| Recommended filtration |
| Pilot ratio |
| Weight |

VALVOLA DI BLOCCO PILOTATA SEMPLICE EFFETTO IN LINEA
IN-LINE SINGLE ACTING PILOT-OPERATED CHECK VALVE



DIMENSIONI
DIMENSIONS

| Cod. ord. ord. cod. | Descrizione description | A | Ch | B | PL | V1 - C1 | Portata Max max Flow | Pressione Max max pressure | Peso weight | Rap di pilotaggio Pilot ratio |
|------------------------|----------------------------|-----|----|----|---------|---------|-------------------------|-------------------------------|----------------|----------------------------------|
| | | mm | mm | mm | GAS | GAS | l/min | bar | kg | |
| 461 | VNR-SE-PIL-14 | 103 | 36 | 12 | 1/4"GAS | 1/4"GAS | 15 | 350 | 0,7 | 8,5:1 |
| 462 | VNR-SE-PIL-38 | 109 | 40 | 12 | 1/4"GAS | 3/8"GAS | 30 | 300 | 0,9 | 6:1 |
| 463 | VNR-SE-PIL-12 | 122 | 42 | 12 | 1/4"GAS | 1/2"GAS | 45 | 300 | 1,1 | 4,5:1 |
| 464 | VNR-SE-PIL-34 | 131 | 55 | 14 | 1/4"GAS | 3/4"GAS | 80 | 250 | 2 | 4,5:1 |

CODICE DI ORDINAZIONE
HOW TO ORDER

003 461 0 0 0

Numero valvola / Valve number

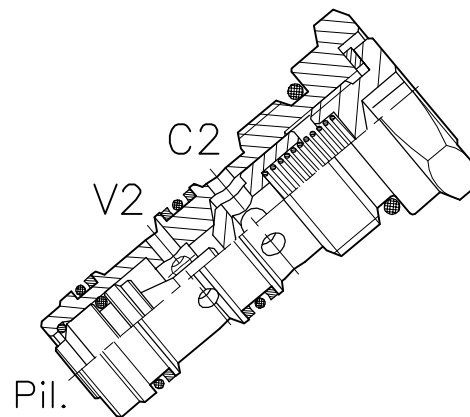
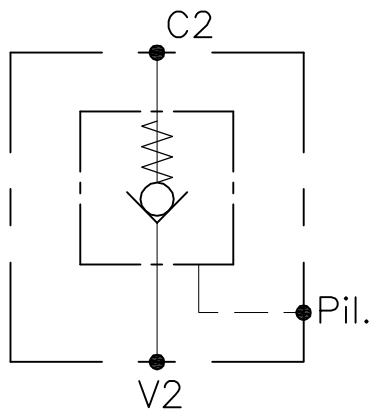
461

462

463

464

VNR-C-SO-SE-50-SP-...

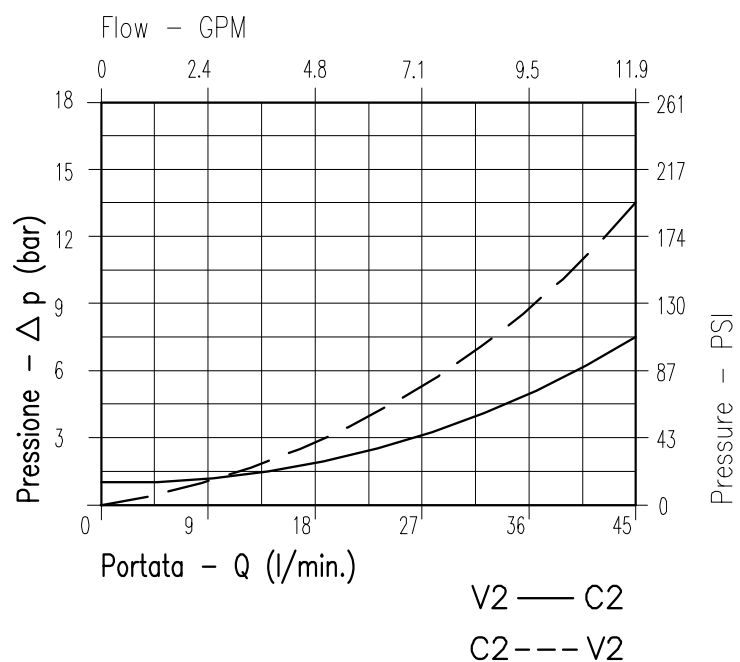


CARATTERISTICHE

| | |
|--------------------------|-----------------------------------|
| Luce nominale | DN 8 |
| Portata min/max | 1/45 l/min - 0.26/11.9 GPM |
| Pressione di lavoro max. | 350 bar - 5075 PSI |
| Rapporto di pilotaggio | 3 : 1 |
| Temperatura ambiente | -30°C + 50°C |
| Temperatura olio | -30°C + 80°C |
| Filtraggio consigliato | 50 micron |
| Coppia di serraggio | 50÷59 Nm |
| Peso | 0.122 Kg |

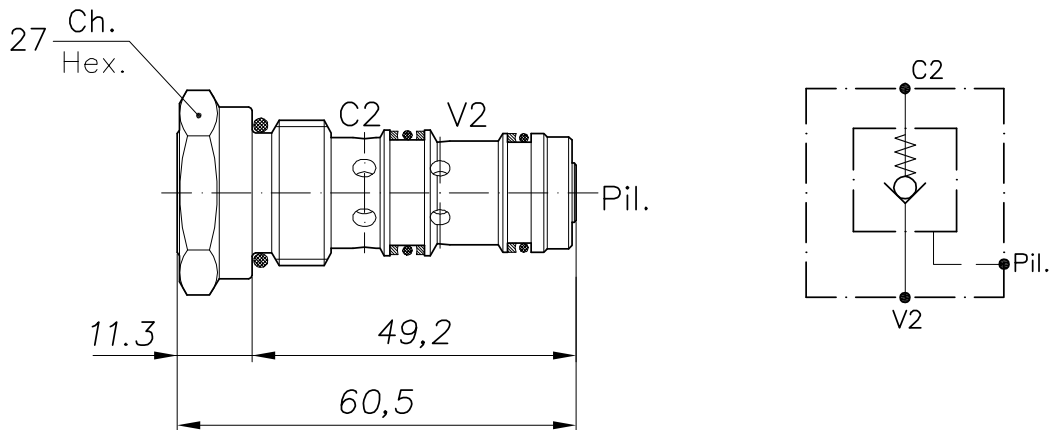
PERFORMANCE

| |
|------------------------|
| Rated size |
| Min/max flow-rate |
| Max working pressure |
| Pilot ratio |
| Room temperature |
| Oil temperature |
| Recommended filtration |
| Tightening torque |
| Weight |

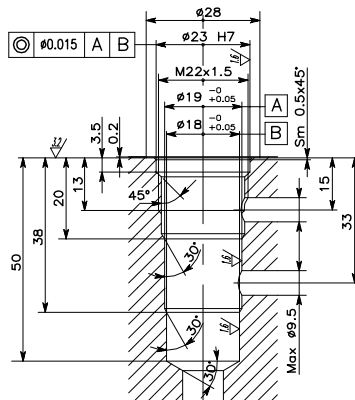


Viscosità olio 46 cSt a 50°C - Oil viscosity 46 cSt at 50°C

VALVOLA DI BLOCCO PILOTATA A CARTUCCIA
CARTRIDGE PILOT CHECK VALVE



CAVITA' CAVITY CE.017.N



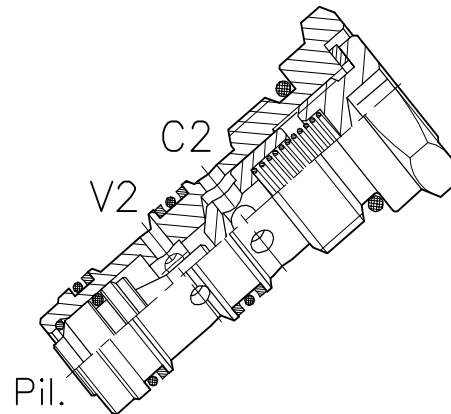
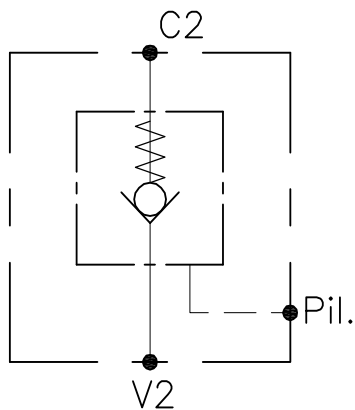
Si raccomanda l'esatta esecuzione della sede
 The valve seat should be perfectly tooled

CODICE DI ORDINAZIONE
HOW TO ORDER

003 265 0 J 0

| Inizio apertura Cracking pressure | |
|--------------------------------------|---|
| J | 1 bar Molla (colore nero) Spring (black) |
| W | 6÷8 bar Molla (colore giallo) Spring (yellow) |
| U | 8÷10 bar Molla (colore rosso) Spring (red) |

VNR-C-SO-SE-50-SP-...

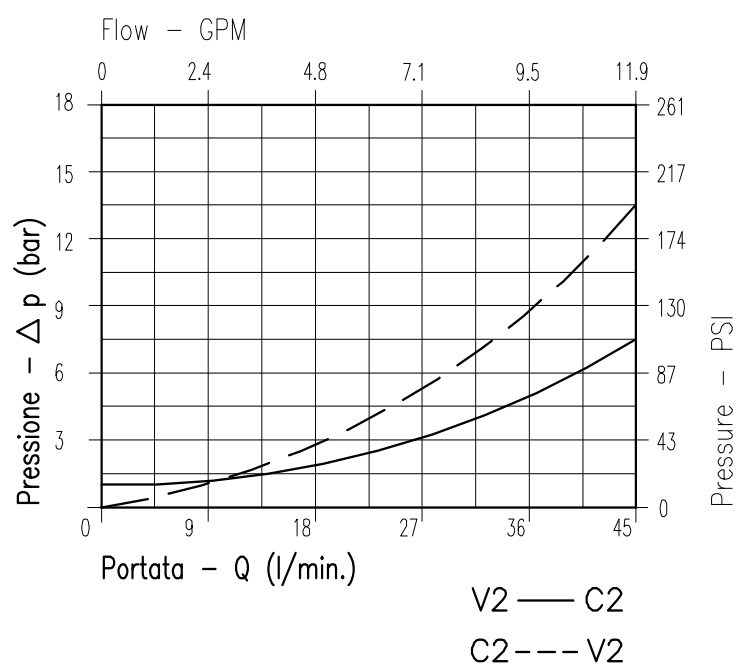


CARATTERISTICHE

| | |
|--------------------------|-----------------------------------|
| Luce nominale | DN 8 |
| Portata min/max | 1/45 l/min - 0.26/11.9 GPM |
| Pressione di lavoro max. | 350 bar - 5075 PSI |
| Rapporto di pilotaggio | 3 : 1 |
| Temperatura ambiente | -30°C + 50°C |
| Temperatura olio | -30°C + 80°C |
| Filtraggio consigliato | 50 micron |
| Coppia di serraggio | 50÷59 Nm |
| Peso | 0.122 Kg |

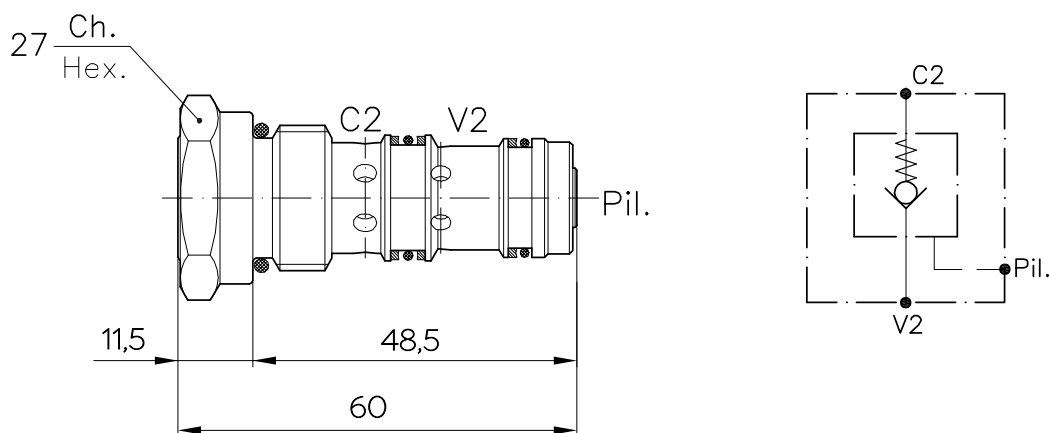
PERFORMANCE

| |
|------------------------|
| Rated size |
| Min/max flow-rate |
| Max working pressure |
| Pilot ratio |
| Room temperature |
| Oil temperature |
| Recommended filtration |
| Tightening torque |
| Weight |

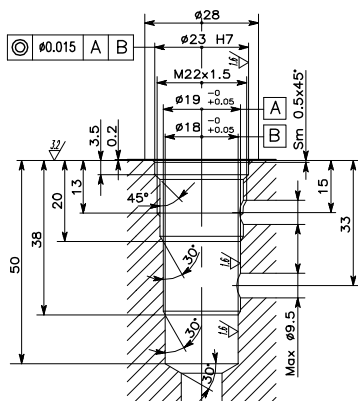


Viscosità olio 46 cSt a 50°C - Oil viscosity 46 cSt at 50°C

VALVOLA DI BLOCCO PILOTATA A CARTUCCIA
CARTRIDGE PILOT CHECK VALVE



CAVITA' CAVITY CE.017.N



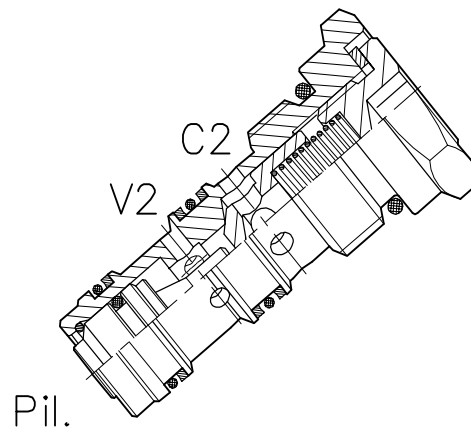
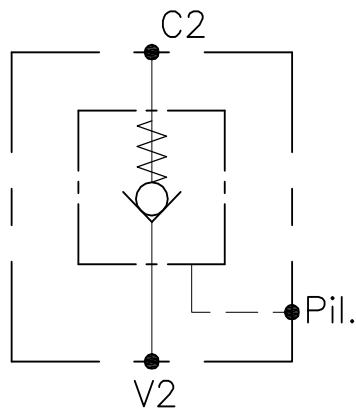
Si raccomanda l'esatta esecuzione della sede
 The valve seat should be perfectly tooled

CODICE DI ORDINAZIONE
HOW TO ORDER

003 362 A W 0

| | |
|---|---|
| | Inizio apertura Cracking pressure |
| W | 6÷8 bar Molla (colore giallo) Spring (yellow) |

VNR-C-SE-071N-78UNF-...

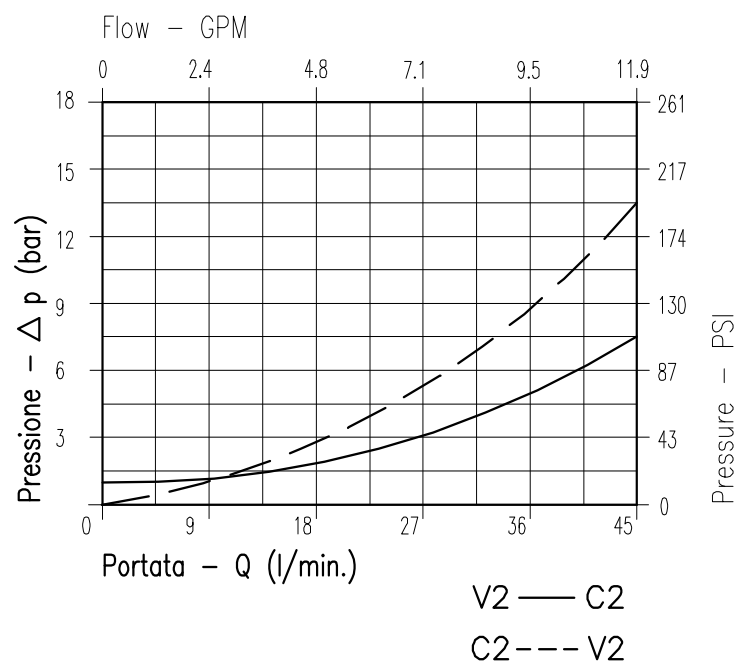


CARATTERISTICHE

| | |
|--------------------------|-----------------------------------|
| Luce nominale | DN 8 |
| Portata min/max | 1/45 l/min - 0.26/11.9 GPM |
| Pressione di lavoro max. | 350 bar - 5075 PSI |
| Rapporto di pilotaggio | 3 : 1 |
| Temperatura ambiente | -30°C + 50°C |
| Temperatura olio | -30°C + 80°C |
| Filtraggio consigliato | 50 micron |
| Coppia di serraggio | 50÷59 Nm |
| Peso | 0.122 Kg |

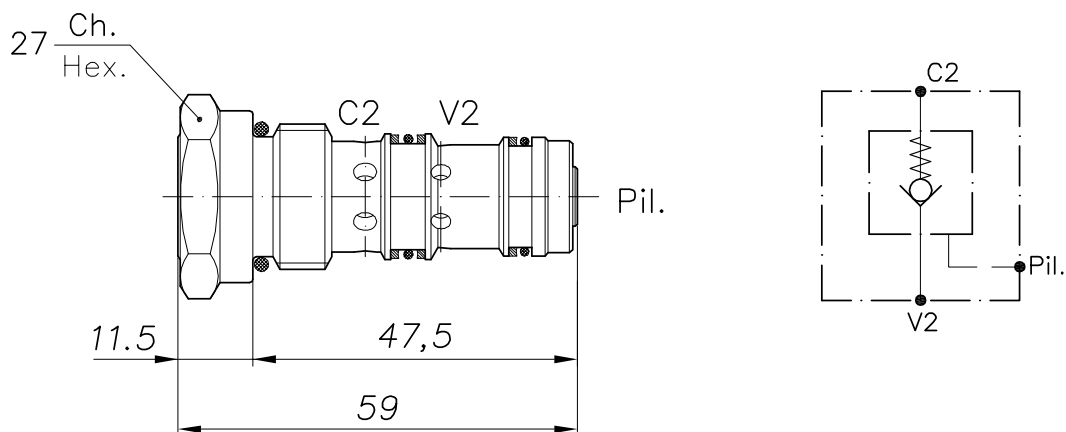
PERFORMANCE

| |
|------------------------|
| Rated size |
| Min/max flow-rate |
| Max working pressure |
| Pilot ratio |
| Room temperature |
| Oil temperature |
| Recommended filtration |
| Tightening torque |
| Weight |

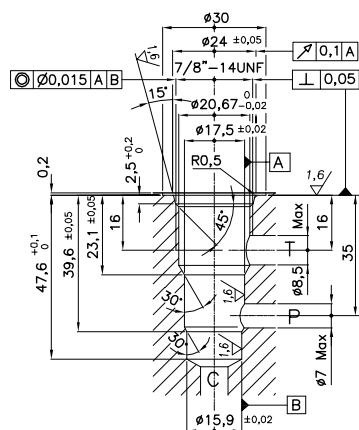


Viscosità olio 46 cSt a 50°C - Oil viscosity 46 cSt at 50°C

VALVOLA DI BLOCCO PILOTATA A CARTUCCIA
CARTRIDGE PILOT CHECK VALVE



CAVITA' CAVITY CE.071.N

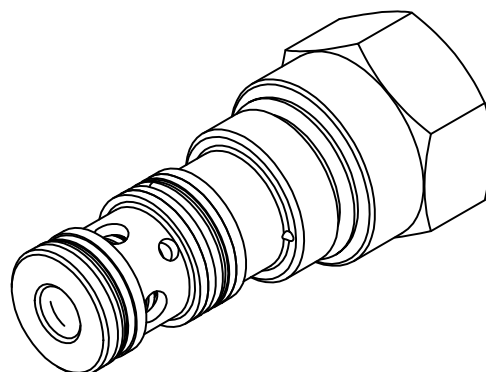
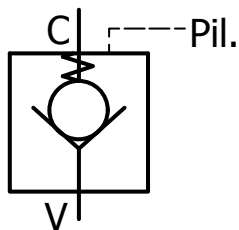


Si raccomanda l'esatta esecuzione della sede
 The valve seat should be perfectly tooled

CODICE DI ORDINAZIONE
HOW TO ORDER

003 335 0 J 0

| Inizio apertura Cracking pressure | |
|--------------------------------------|---|
| J | 1 bar Molle (colore nero) Spring (black) |
| W | 6-8 bar Molle (colore giallo) Spring (yellow) |

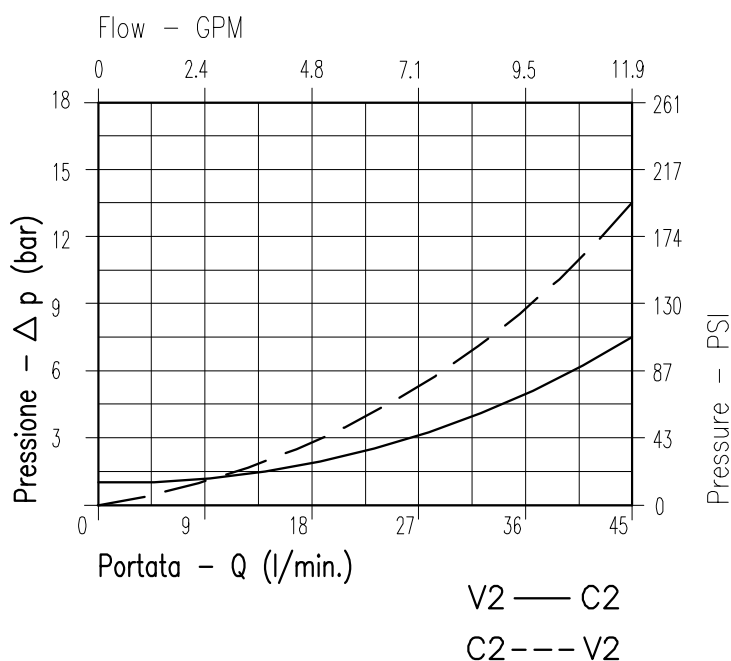


CARATTERISTICHE

| | |
|--------------------------|-----------------------------------|
| Luce nominale | DN 8 |
| Portata min/max | 1/45 l/min - 0.26/11.9 GPM |
| Pressione di lavoro max. | 350 bar - 5075 PSI |
| Rapporto di pilotaggio | 3 : 1 |
| Temperatura ambiente | -30°C + 50°C |
| Temperatura olio | -30°C + 80°C |
| Filtraggio consigliato | 50 micron |
| Coppia di serraggio | 50÷59 Nm |
| Peso | 0.122 Kg |

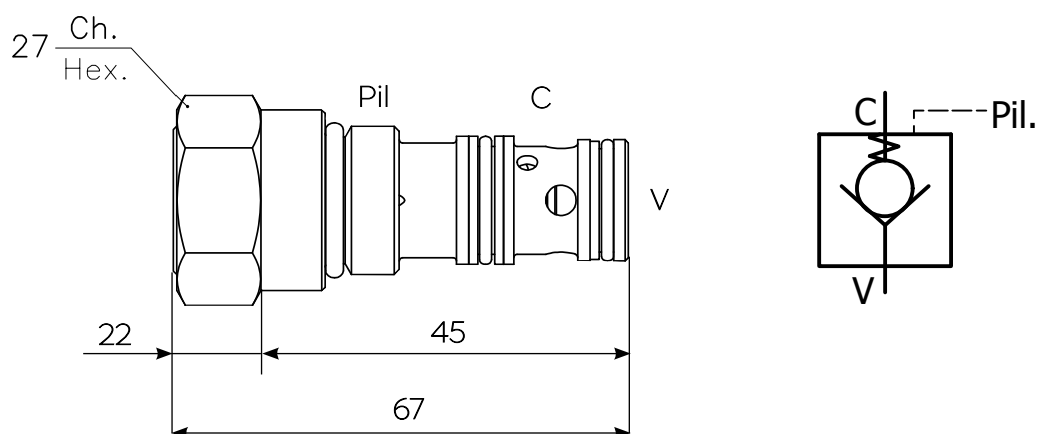
PERFORMANCE

| |
|------------------------|
| Rated size |
| Min/max flow-rate |
| Max working pressure |
| Pilot ratio |
| Room temperature |
| Oil temperature |
| Recommended filtration |
| Tightening torque |
| Weight |

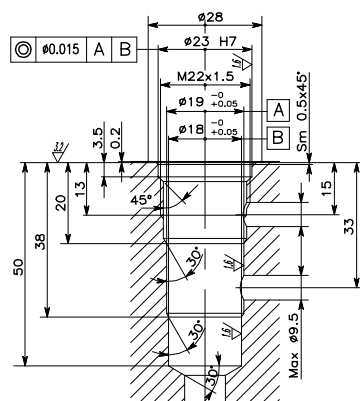


Viscosità olio 46 cSt a 50°C - Oil viscosity 46 cSt at 50°C

VALVOLA DI BLOCCO PILOTATA A CARTUCCIA
CARTRIDGE PILOT CHECK VALVE



CAVITA' CAVITY CE.017.N



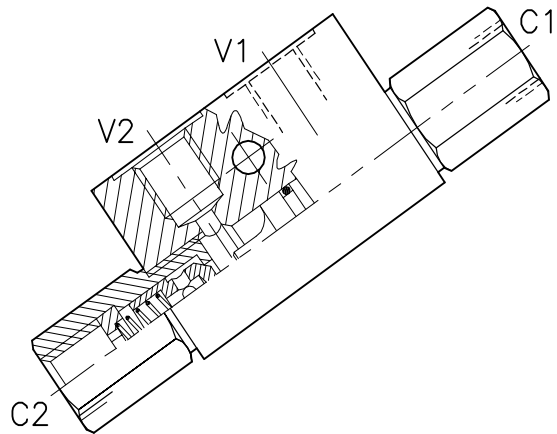
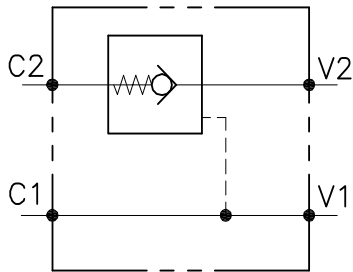
Si raccomanda l'esatta esecuzione della sede
 The valve seat should be perfectly tooled

CODICE DI ORDINAZIONE
HOW TO ORDER

003 269 A J 0

Inizio apertura
 Cracking pressure
 J 1 bar
 Molla (colore nero)
 Spring (black)

VNR-SO-SE-...-L-...



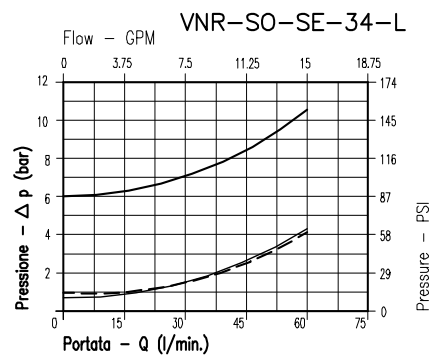
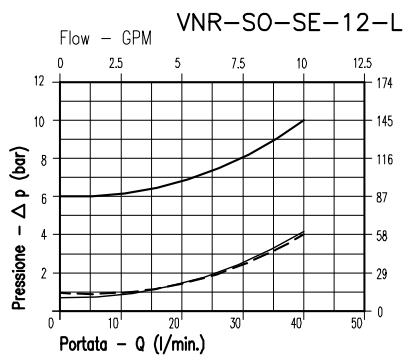
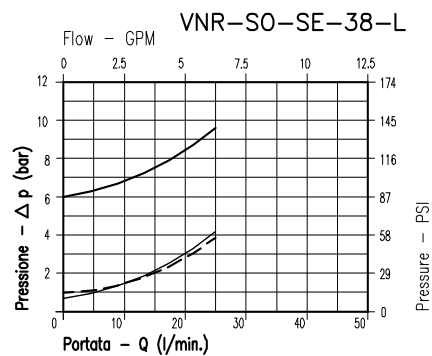
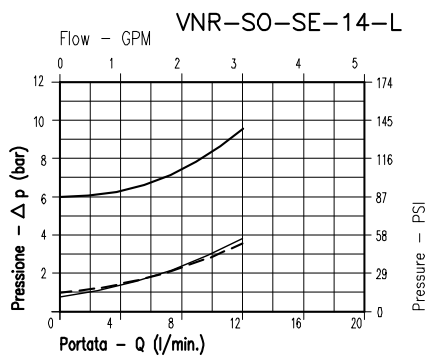
CARATTERISTICHE

Luce nominale min/max
 Portata min/max
 Pressione di lavoro max.
 Temperatura ambiente
 Temperatura olio
 Filtraggio consigliato

Vedi pag. 2
Vedi pag. 2
350 bar - 5075 PSI
-30°C + 50°C
-30°C + 80°C
30÷50

PERFORMANCE

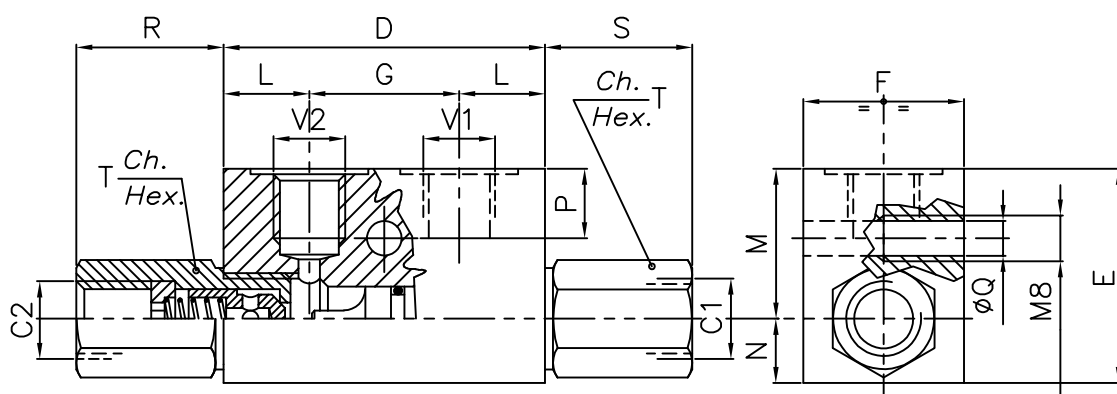
Min/max rated size
 Min/max flow-rate
 Max working pressure
 Room temperature
 Oil temperature
 Recommended filtration



- 8Bar Flusso libero (free flow)
- - - - - 1Bar Flusso libero (free flow)
- Flusso pilotato (piloted flow)

Viscosità olio 46 cSt a 50°C
Oil viscosity 46 cSt at 50°C

VALVOLA DI BLOCCO A SEMPLICE EFFETTO PILOTATA
SINGLE PILOT CHECK VALVE, POPPET TYPE



SOLO PER VERSIONI 1/4" E 3/8" GAS / ONLY FOR 1/4" 3/8" GAS VERSION

DIMENSIONI
DIMENSIONS

| NUMERO VALVOLA VALVE NUMBER | D | E | F | G | L | M | N | P | Q | R | S | T | Attacchi Port size V2-C2 V1-C1 GAS (BSPP) | Luce nomi- nale Rated size DN | Rapporto di pilotaggio Pilot ratio | Portata max max flow-rate l/min-GPM |
|--------------------------------|-----|----|----|----|----|----|----|----|-----|----|----|-------|---|--|--|---|
| 026 | 64 | 40 | 30 | 36 | 14 | 27 | 13 | 8 | 6,5 | 27 | 27 | 22 | 1/4" | 6 | 6:1 | 12-3.2 |
| 027 | | | | | | | | | | | | | 3/8" | 6 | 6:1 | 23-6 |
| 028 | 80 | 50 | 35 | 38 | 21 | 34 | 16 | 15 | 6,5 | 32 | 26 | 27 | 1/2" | 11 | 4:1 | 40-10.6 |
| 029 | 100 | 60 | 40 | 50 | 25 | 39 | 21 | 15 | 8,5 | 41 | 41 | 38/32 | 3/4" | 16 | 3.5:1 | 60-15.8 |

CODICE DI ORDINAZIONE
HOW TO ORDER

N03 027 0 W 0 . A

Numero valvola / Valve number

026

027

Pistone di pilotaggio
Pilot piston

- A O-RING sul pist. di pilotaggio
Pilot piston O-RING
- O Senza O-RING sul pist. di pilotaggio
No pilot piston O-RING

Inizio apertura
Cracking pressure

- J 1 bar
Molla (colore nero)
Spring (black)
- W 6÷8 bar
Molla (colore giallo)
Spring (yellow)

Materiale collettore
body material

Acciaio
zincato
Zinc plated steel

003 029 0 W 0 . A

Numero valvola / Valve number

028

029

Pistone di pilotaggio
Pilot piston

- A O-RING sul pist. di pilotaggio
Pilot piston O-RING
- O Senza O-RING sul pist. di pilotaggio
No pilot piston O-RING

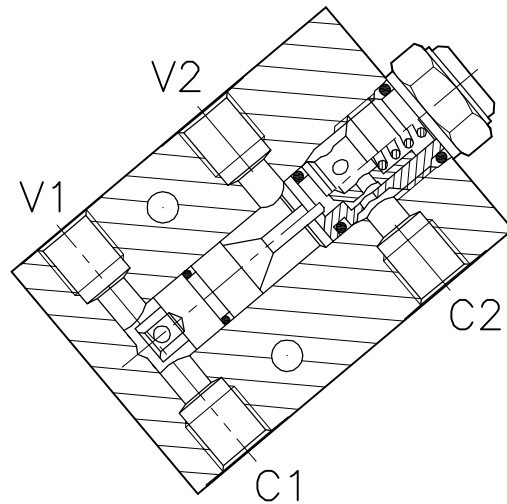
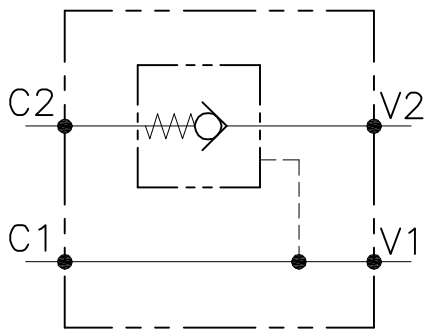
Inizio apertura
Cracking pressure

- J 1 bar
Molla (colore nero)
Spring (black)
- W 6÷8 bar
Molla (colore giallo)
Spring (yellow)

Materiale collettore
body material

Acciaio
zincato
Zinc plated steel

VNR-C-SO-SE-...-...



CARATTERISTICHE

| | |
|--------------------------|---------------------------|
| Luce nominale min/max | Vedi Pag. 6 |
| Portata min/max | Vedi Pag. 6 |
| Pressione di lavoro max. | 350 bar - 5075 PSI |
| Rapporto di pilotaggio | 4 : 1 |
| Temperatura ambiente | -30°C + 50°C |
| Temperatura olio | -30°C + 80°C |
| Filtraggio consigliato | 50 micron |
| Peso | 0.459 Kg. 1/4" GAS |
| Peso | 0.750 Kg. 3/8" GAS |
| Peso | 0.724 Kg. 1/2" GAS |

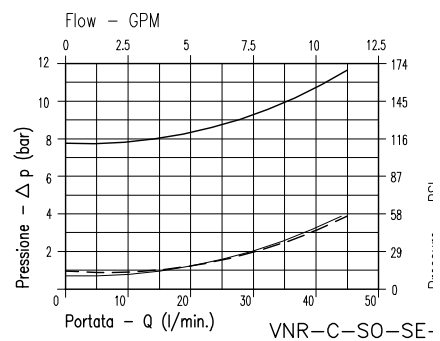
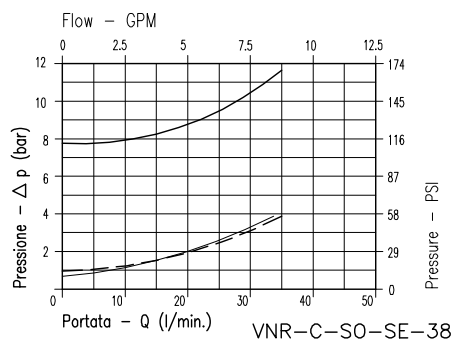
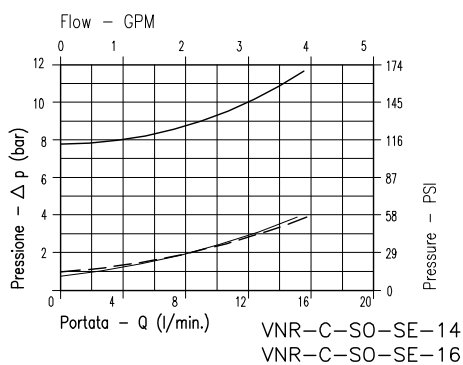
PERFORMANCE

| |
|------------------------|
| Min/max rated size |
| Min/max flow-rate |
| Max working pressure |
| Pilot ratio |
| Room temperature |
| Oil temperature |
| Recommended filtration |
| Weight |
| Weight |
| Weight |

8Bar Flusso libero
(free flow)

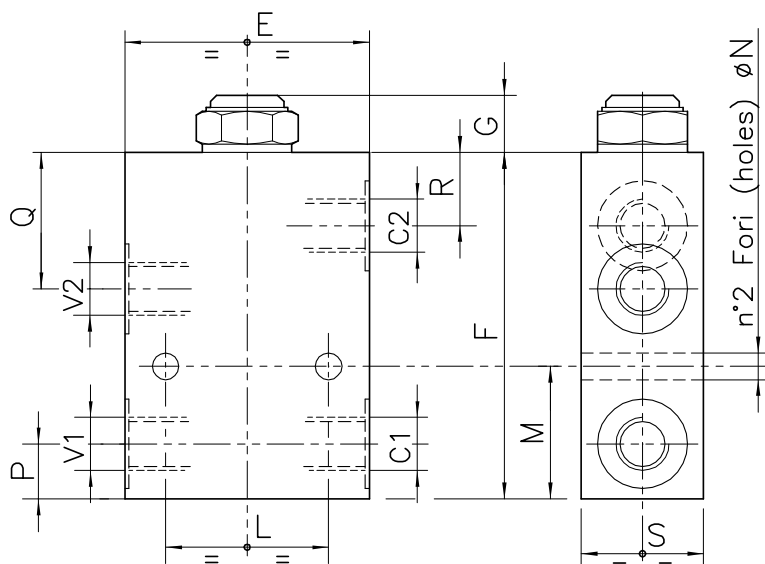
1Bar Flusso libero
(free flow)

Flusso pilotato
(piloted flow)

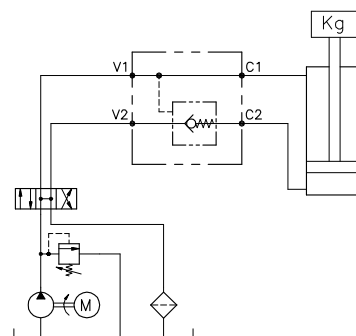


Viscosità olio 46 cSt a 50°C / Oil viscosity 46 cSt at 50°C

VALVOLA DI BLOCCO PILOTATA, A SEMPLICE EFFETTO CON COLLETTORE IN LINEA
SINGLE PILOT, CHECK VALVE WITH IN LINE BODY



ESEMPIO TIPICO DI CIRCUITO
TYPICAL CIRCUIT EXAMPLE



DIMENSIONI
DIMENSIONS

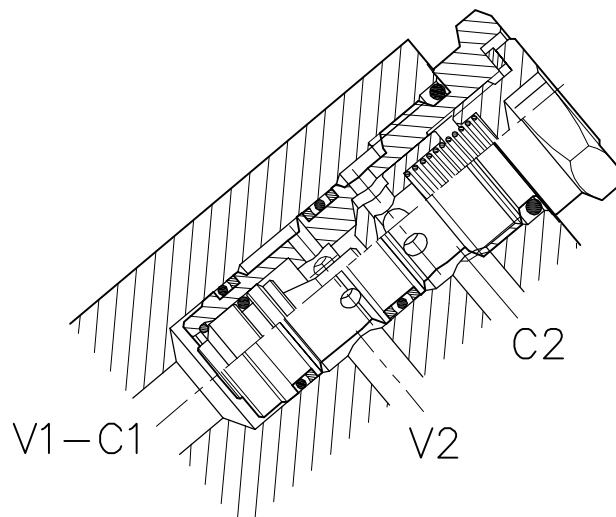
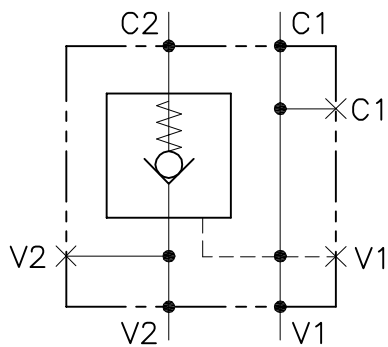
| NUMERO VALVOLA VALVE NUMBER | E | F | G | L | M | N | P | Q | R | S | Attacchi Port size V2-C2 V1-C1 GAS (BSPP) | Luce nominale Rated size DN | Portata max Max flow-rate l/min - GPM |
|-----------------------------------|----|----|----|----|------|-----|------|------|------|----|---|--------------------------------------|---|
| 036 | 60 | 85 | 15 | 40 | 32.5 | 6.5 | 13.5 | 33.5 | 18 | 30 | 1/4" | 4 | 15-4 |
| 038 | 70 | 95 | 18 | 40 | 40 | 8.5 | 19 | 38 | 20.5 | 35 | 3/8" | 6 | 35-9.2 |
| 039 | 70 | 95 | 18 | 40 | 40 | 8.5 | 19 | 38 | 20.5 | 35 | 1/2" | 8 | 45-12 |

CODICE DI ORDINAZIONE
HOW TO ORDER

003 036 0 J 0 . A

| Numero valvola / Valve number | Pistone di pilotaggio Pilot piston | Inizio apertura Cracking pressure | Materiale collettore body material |
|-------------------------------|--|---|---------------------------------------|
| 036 | A O-RING sul pist. di pilotaggio Pilot piston O-RING | J 1 bar Molla (colore nero) Spring (black) | Acciaio Zincato Zinc Plated Steel |
| 038 | O Senza O-RING sul pist. di pilotaggio No pilot piston O-RING | W 6÷8 bar Molla (colore giallo) Spring (yellow) | |
| 039 | | | |

VNR-C-SO-SE-50-SP-FCB-...-...

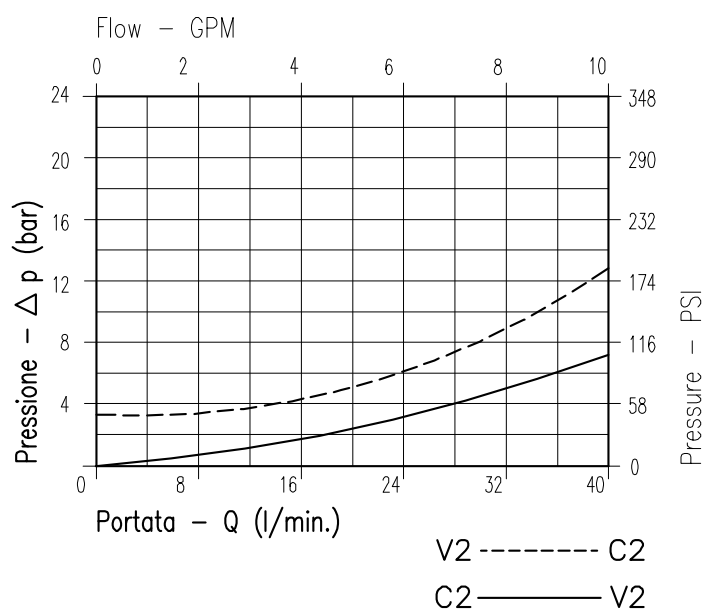


CARATTERISTICHE

| | |
|--------------------------|------------------------------------|
| Luce nominale | DN 6 |
| Portata min/max | 1/40 l/min. - 0.26/10.6 GPM |
| Pressione di lavoro max. | 350 bar - 5075 PSI |
| Rapporto di pilotaggio | 3 : 1 |
| Temperatura ambiente | -30°C + 50°C |
| Temperatura olio | -30°C + 80°C |
| Filtraggio consigliato | 50 micron |
| Peso | 0.865 Kg 3/8" GAS |
| Peso | 1.179 Kg 1/2" GAS |

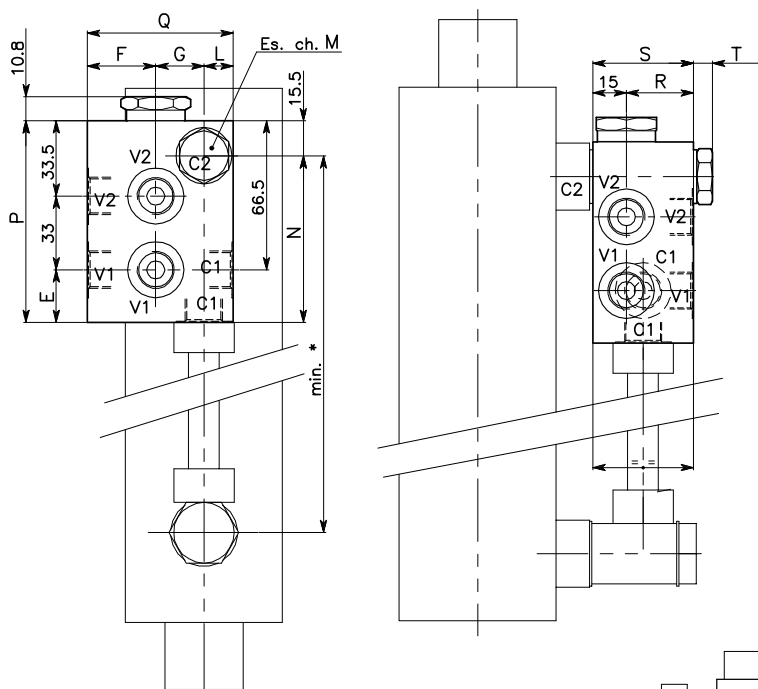
PERFORMANCE

| |
|------------------------|
| Rated size |
| Min/max flow-rate |
| Max working pressure |
| Pilot ratio |
| Room temperature |
| Oil temperature |
| Recommended filtration |
| Weight |
| Weight |

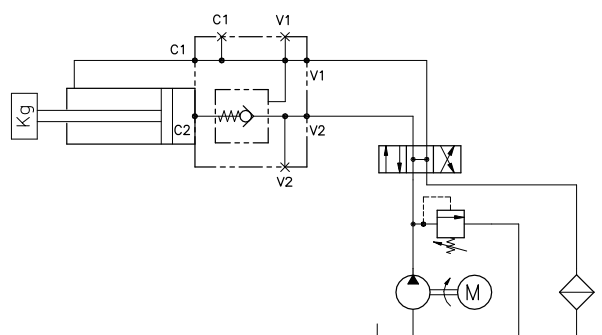


Viscosità olio 46 cSt a 50°C
Oil viscosity 46 cSt at 50°C

VALVOLA DI BLOCCO PILOTATA A CARTUCCIA A SEMPLICE EFFETTO CON COLLETTORE FLANGIATO
CARTRIDGE PILOT CHECK VALVE WITH FLANGEABLE BODY



ESEMPIO TIPICO DI CIRCUITO
TYPICAL CIRCUIT EXAMPLE



DIMENSIONI
DIMENSIONS

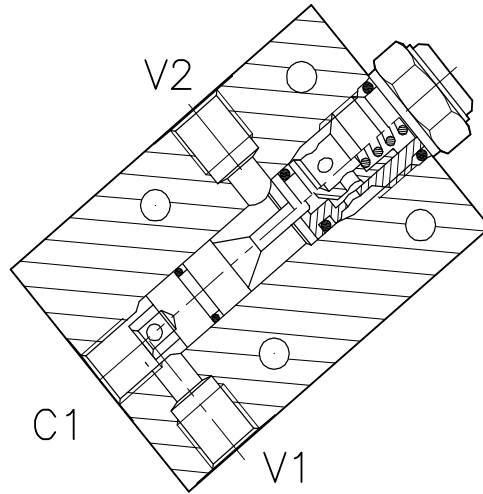
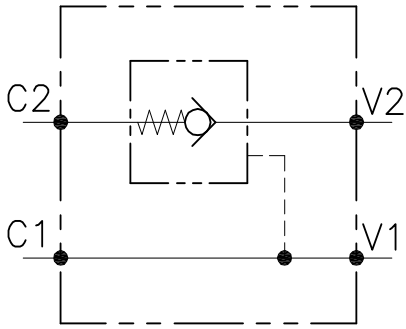
| NUMERO VALVOLA VALVE NUMBER | E | F | G | L | M | N | P | Q | R | S | T | Attacchi Port size V2-C2 V1-C1 GAS (BSPP) |
|-----------------------------------|------|------|------|----|----|------|----|----|----|----|----|---|
| 233 | 23.5 | 30.5 | 21.5 | 13 | 22 | 74.5 | 90 | 65 | 30 | 45 | 9 | 3/8" |
| 251 | 28.5 | 33 | 26 | 16 | 27 | 79.5 | 95 | 75 | 35 | 50 | 10 | 1/2" |

CODICE DI ORDINAZIONE
HOW TO ORDER

003 233 0 J 0 . A

| | | | |
|-------------------------------|--|---|---------------------------------------|
| Numero valvola / Valve number | Pistone di pilotaggio Pilot piston | Inizio apertura Cracking pressure | Materiale collettore Body material |
| 233 | A O-RING sul pist. di pilotaggio Pilot piston O-RING | J 1 bar Molla (colore nero) Spring (black) | Acciaio zincato Zinc plated steel |
| 251 | O Senza O-RING sul pist. di pilotaggio No pilot piston O-RING | W 6÷8 bar Molla (colore giallo) Spring (yellow) | |

VNR-C-SO-SE-...-FC1-...



CARATTERISTICHE

| | |
|--------------------------|---------------------------|
| Luce nominale min/max | Vedi Pag. 10 |
| Portata min/max | Vedi Pag. 10 |
| Pressione di lavoro max. | 350 bar - 5075 PSI |
| Rapporto di pilotaggio | 4 : 1 |
| Temperatura ambiente | -30°C + 50°C |
| Temperatura olio | -30°C + 80°C |
| Filtraggio consigliato | 50 micron |
| Peso | 0.459 Kg. 1/4" GAS |
| Peso | 0.750 Kg. 3/8" GAS |
| Peso | 0.724 Kg. 1/2" GAS |

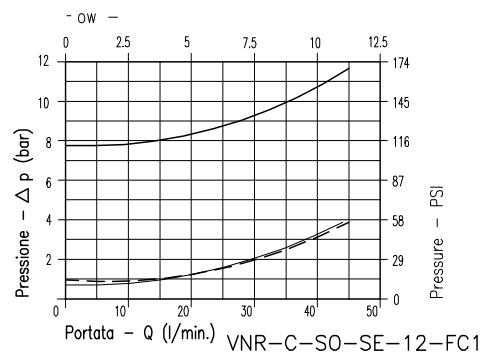
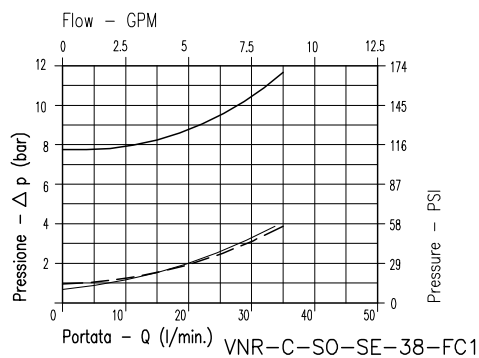
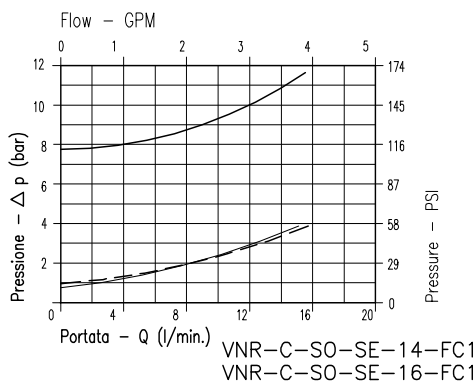
PERFORMANCE

| |
|------------------------|
| Min/max rated size |
| Min/max flow-rate |
| Max working pressure |
| Pilot ratio |
| Room temperature |
| Oil temperature |
| Recommended filtration |
| Weight |
| Weight |
| Weight |

8Bar Flusso libero
(free flow)

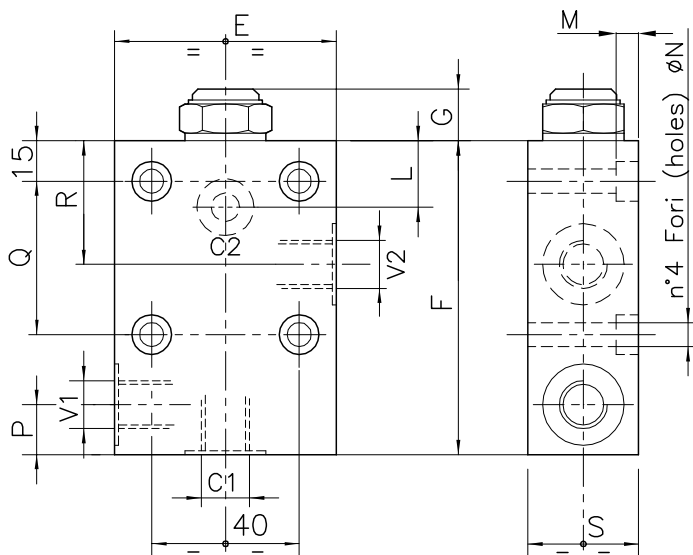
1Bar Flusso libero
(free flow)

Flusso pilotato
(piloted flow)

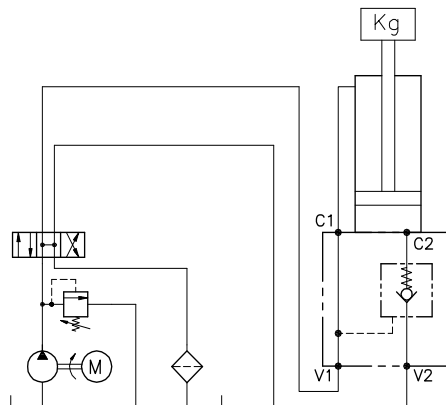


Viscosità olio 46 cSt a 50°C / Oil viscosity 46 cSt at 50°C

VALVOLA DI BLOCCO PILOTATA A CARTUCCIA A SEMPLICE EFFETTO CON COLLETTORE FLANGIATO
CARTRIDGE PILOT CHECK VALVE WITH FLANGEABLE BODY



ESEMPIO TIPICO DI CIRCUITO
TYPICAL CIRCUIT EXAMPLE



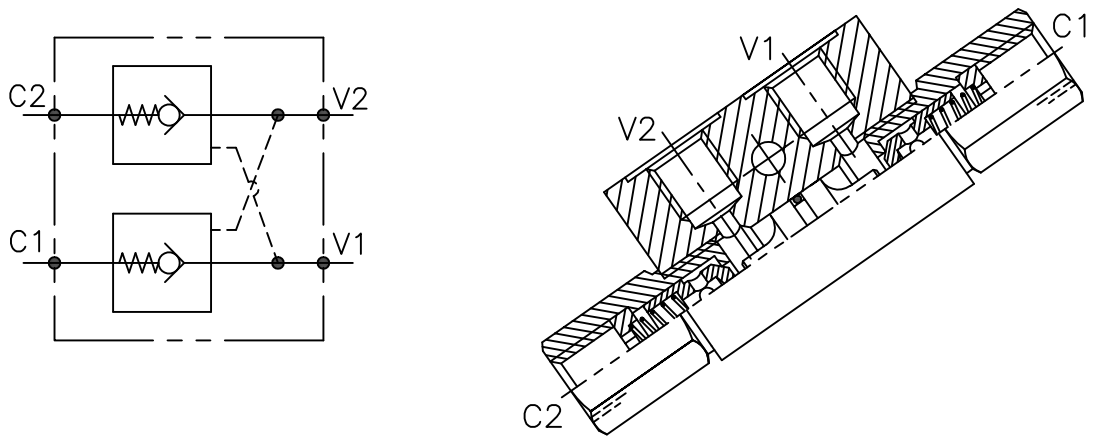
DIMENSIONI
DIMENSIONS

| NUMERO VALVOLA VALVE NUMBER | E | F | G | L | M | N | P | Q | R | S | Attacchi Port size V2-C2 V1-C1 GAS (BSPP) | Luce nominale Rated size | Portata max Max flow-rate |
|-----------------------------------|----|----|----|------|---|-----|------|------|------|----|---|-----------------------------|------------------------------|
| | | | | | | | | | | | DN | l/min - GPM | |
| 040 | 60 | 85 | 15 | 19 | 6 | 6,5 | 13,5 | 37,5 | 33,5 | 30 | 1/4" | 4 | 15-4 |
| 042 | 70 | 95 | 18 | 20,5 | 3 | 8,5 | 19 | 40 | 38 | 35 | 3/8" | 8 | 35-9.2 |
| 043 | 70 | 95 | 18 | 20,5 | 3 | 8,5 | 19 | 40 | 38 | 35 | 1/2" | 8 | 45-12 |

CODICE DI ORDINAZIONE
HOW TO ORDER

| | | | | | |
|-------------------------------|--|---|---------------------------------------|---|----|
| 003 | 040 | 0 | J | 0 | .A |
| Numero valvola / Valve number | Pistone di pilotaggio Pilot piston | Inizio apertura Cracking pressure | Materiale collettore Body material | | |
| 040 | A O-RING sul pist. di pilotaggio Pilot piston O-RING | J 1 bar Molla (colore nero) Spring (black) | Acciaio zincato Zinc plated steel | | |
| 042 | O Senza O-RING sul pist. di pilotaggio No pilot piston O-RING | W 6÷8 bar Molla (colore giallo) Spring (yellow) | | | |
| 043 | | | | | |

A-VNR-C-SO-DE-...-L-...

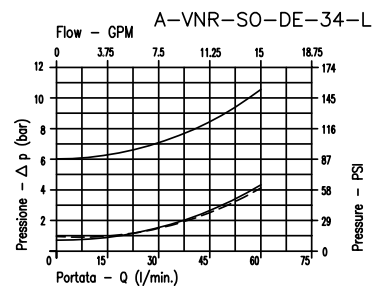
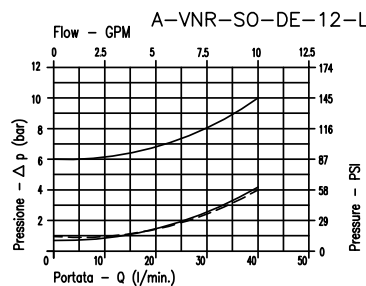
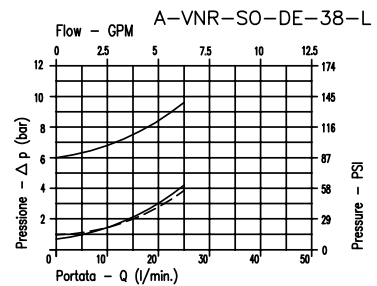
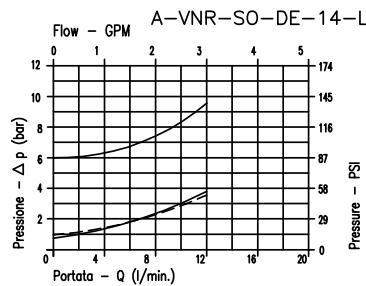


CARATTERISTICHE

| | |
|---------------------------------|----------------------------------|
| Luce nominale | Pagina seguente/next page |
| Portata min/max | Pagina seguente/next page |
| Pressione max. di picco | 350 bar 5075 PSI |
| Pressione max. di taratura | Pagina seguente/next page |
| Rapporto di pilotaggio standard | Pagina seguente/next page |
| Temperatura ambiente | -30°C + 50°C |
| Temperatura olio | -30°C + 80°C |
| Filtraggio consigliato | 30 + 50 |
| Coppia di serraggio | Pagina seguente/next page |
| Peso | 0.7-0.9-0.1-2 kg |

PERFORMANCE

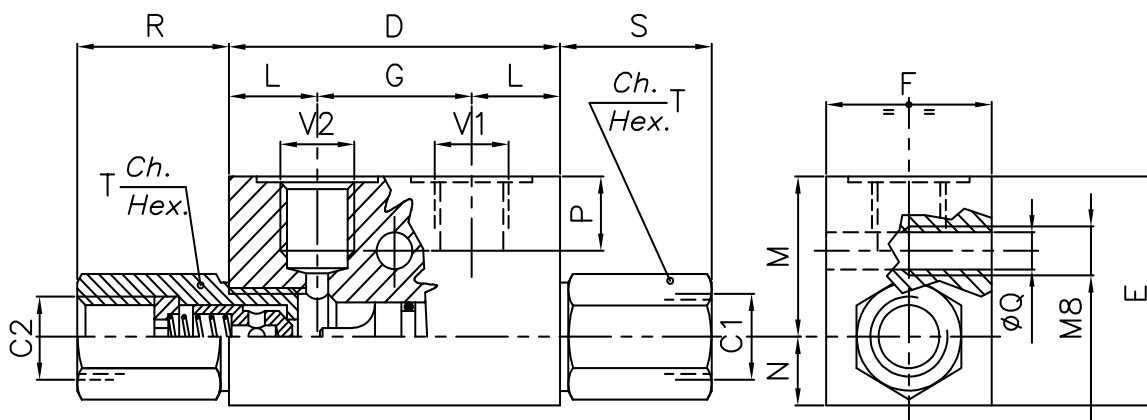
| |
|------------------------|
| Rated size |
| Min/max flow-rate |
| Max peak pressure |
| Max setting pressure |
| Standard pilot ratio |
| Room temperature |
| Oil temperature |
| Recommended filtration |
| Tightening torque |
| Weight |



——— 8Bar Flusso libero (Free flow)
 - - - 1Bar Flusso libero (Free flow)
 ——— Flusso pilotato (Piloted open)

Viscosita' olio 46 cSt a 50 °C
 Oil viscosity 46 cSt at 50 °C

VALVOLA DI BLOCCO A DOPPIO EFFETTO PILOTATA DOUBLE PILOT CHECK VALVE



SOLO PER VERSIONI 1/4" E 3/8" GAS / ONLY FOR 1/4" 3/8" GAS VERSION

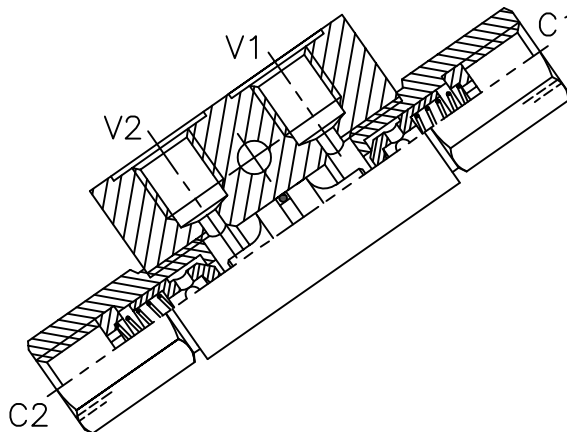
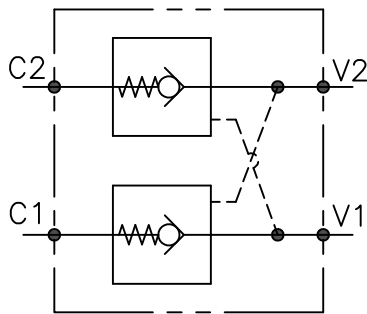
DIMENSIONI DIMENSIONS

| NUMERO VALVOLA VALVE NUMBER | D | E | F | G | L | M | N | P | Q | R | S | T | Attacchi Port size V2-C2 V1-C1 GAS (BSPP) | Luce nominale Rated size DN | Rapporto di pilotaggio Pilot ratio | Portata max max flow-rate l/min-GPM |
|--------------------------------|-----|----|----|----|----|----|----|----|-----|----|----|----|--|-----------------------------------|---------------------------------------|---|
| 030 | 64 | 40 | 30 | 36 | 14 | 27 | 13 | 8 | 6,5 | 27 | 27 | 22 | 1/4" | 6 | 6:1 | 12-3.2 |
| 031 | | | | | | | | | | | | | 3/8" | 8 | 6:1 | 23-6 |
| 032 | 80 | 50 | 35 | 38 | 21 | 34 | 16 | 15 | 6,5 | 32 | 26 | 27 | 1/2" | 11 | 4:1 | 40-10.6 |
| 033 | 100 | 60 | 40 | 50 | 25 | 39 | 21 | 15 | 8,5 | 41 | 33 | 38 | 3/4" | 15 | 3.5:1 | 60-15.8 |

CODICE DI ORDINAZIONE HOW TO ORDER

| | | | | | | |
|-------------------------------|-----|--|---|---|---|---------------------------------------|
| N03 | 031 | 0 | W | 0 | . | A |
| Numero valvola / Valve number | | Pistone di pilotaggio Pilot piston | | Inizio apertura Cracking pressure | | Materiale collettore Body material |
| 030 | | A O-RING sul pist. di pilotaggio Pilot piston O-RING | | J 1 bar Molla (colore nero) Spring (black) | | Acciaio zincato Zinc plated steel |
| 031 | | O Senza O-RING sul pist. di pilotaggio No pilot piston O-RING | | W 6÷8 bar Molla (colore giallo) Spring (yellow) | | |
| 003 | 033 | 0 | W | 0 | . | A |
| Numero valvola / Valve number | | Pistone di pilotaggio Pilot piston | | Inizio apertura Cracking pressure | | Materiale collettore Body material |
| 032 | | A O-RING sul pist. di pilotaggio Pilot piston O-RING | | J 1 bar Molla (colore nero) Spring (black) | | Acciaio zincato Zinc plated steel |
| 033 | | O Senza O-RING sul pist. di pilotaggio No pilot piston O-RING | | W 6÷8 bar Molla (colore giallo) Spring (yellow) | | |

VNR-SO-DE-...-L-...



CARATTERISTICHE

Luce nominale

Portata min/max

Pressione max. di picco

Pressione max. di taratura

Rapporto di pilotaggio standard

Temperatura ambiente

Temperatura olio

Filtraggio consigliato

Coppia di serraggio

Peso

Pagina seguente/next page

Pagina seguente/next page

350 bar 5075 PSI

Pagina seguente/next page

Pagina seguente/next page

-30°C + 50°C

-30°C + 80°C

30 + 50

Pagina seguente/next page

0.7-0.9-0.1-2 kg

PERFORMANCE

Rated size

Min/max flow-rate

Max peak pressure

Max setting pressure

Standard pilot ratio

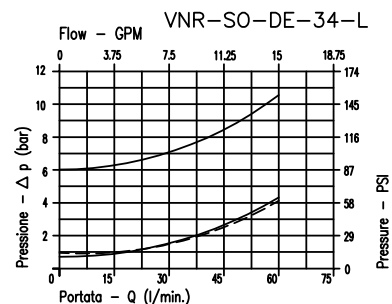
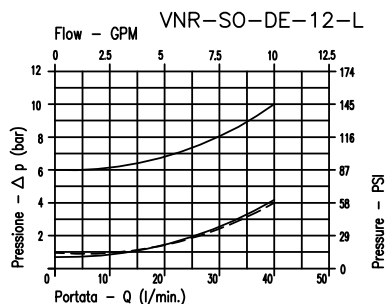
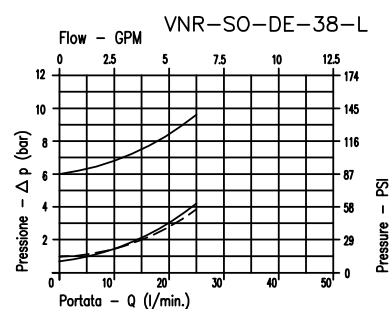
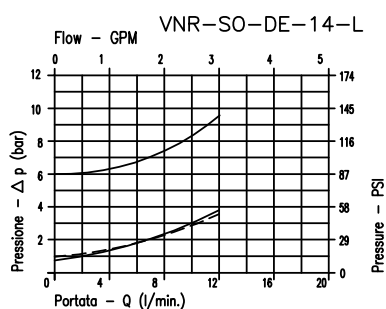
Room temperature

Oil temperature

Recommended filtration

Tightening torque

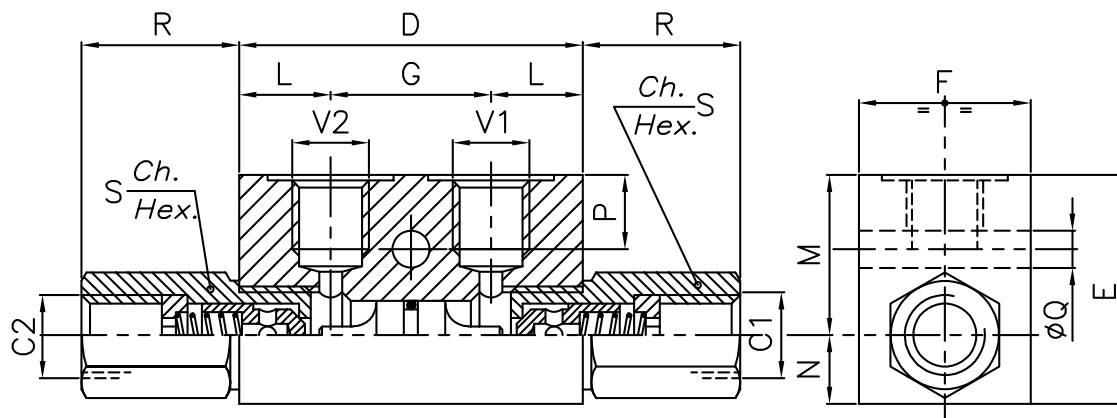
Weight



——— 8Bar Flusso libero (Free flow)
 - - - 1Bar Flusso libero (Free flow)
 ——— Flusso pilotato (Piloted open)

Viscosita' olio 46 cSt a 50 °C
 Oil viscosity 46 cSt at 50 °C

VALVOLA DI BLOCCO A DOPPIO EFFETTO PILOTATA
ALUMINIUM DOUBLE PILOT CHECK VALVE



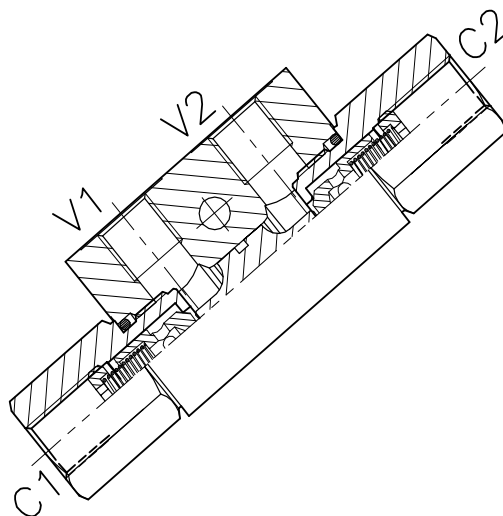
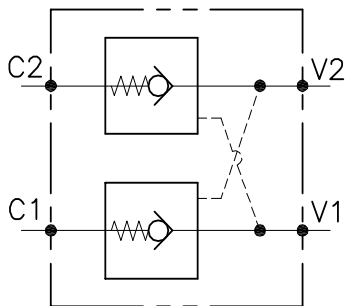
DIMENSIONI
DIMENSIONS

| NUMERO VALVOLA VALVE NUMBER | D | E | F | G | L | M | N | P | Q | R | S | Attacchi Port size V2-C2 V1-C1 GAS (BSPP) | Luce nominale Rated size DN | Rapporto di pilotaggio Pilot ratio | Portata max max flow-rate l/min-GPM |
|--------------------------------|-----|----|----|----|----|----|----|----|-----|------|----|---|-----------------------------------|--|---|
| 030 | 60 | 40 | 30 | 28 | 16 | 28 | 12 | 13 | 6.5 | 27,5 | 19 | 1/4" | 6 | 4:1 | 10-3.2 |
| 031 | 70 | 50 | 35 | 38 | 16 | 35 | 15 | 15 | 6.5 | 29 | 24 | 3/8" | 8 | 4:1 | 23-6 |
| 032 | 80 | 50 | 35 | 38 | 21 | 34 | 16 | 15 | 6.5 | 32 | 27 | 1/2" | 11 | 4:1 | 40-10.6 |
| 033 | 100 | 60 | 40 | 50 | 25 | 39 | 21 | 15 | 8.5 | 41 | 38 | 3/4" | 16 | 3.5:1 | 60-15.8 |

COLLETTORE IN ALLUMINIO
ALUMINIUM BODY

CODICE DI ORDINAZIONE
HOW TO ORDER

| | | | | |
|-------------------------------|--|---|---|---|
| 003 | 033 | 0 | W | 0 |
| Numero valvola / Valve number | Pistone di pilotaggio Pilot piston | Inizio apertura Cracking pressure | | |
| 030 | A O-RING sul pist. di pilotaggio Pilot piston O-RING | J 1 bar Molla (colore nero) Spring (black) | | |
| 031 | O Senza O-RING sul pist. di pilotaggio No pilot piston O-RING | W 6÷8 bar Molla (colore giallo) Spring (yellow) | | |
| 032 | | | | |
| 033 | | | | |



CARATTERISTICHE

Luce nominale min/max
 Portata min/max
 Pressione di lavoro max.
 Rapporto di pilotaggio
 Temperatura ambiente
 Temperatura olio
 Filtraggio consigliato
 Peso
 Peso

Pagina seguente/next page

Pagina seguente/next page

350 bar - 5075 PSI

4 : 1

-30°C + 50°C

-30°C + 80°C

30÷50 micron

0.645 Kg. 1/4" GAS

0.657 Kg. 3/8" GAS

PERFORMANCE

Min/max rated size

Min/max flow-rate

Max working pressure

Pilot ratio

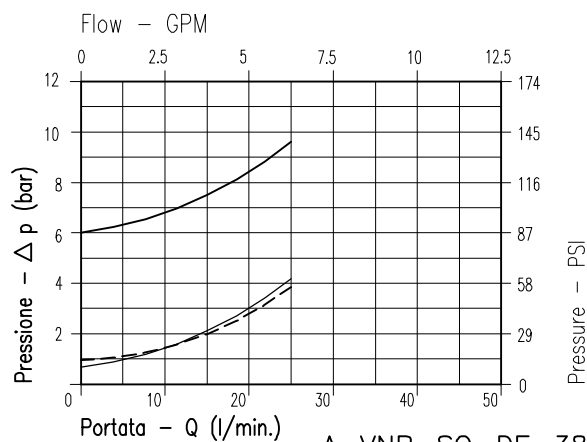
Room temperature

Oil temperature

Recommended filtration

Weight

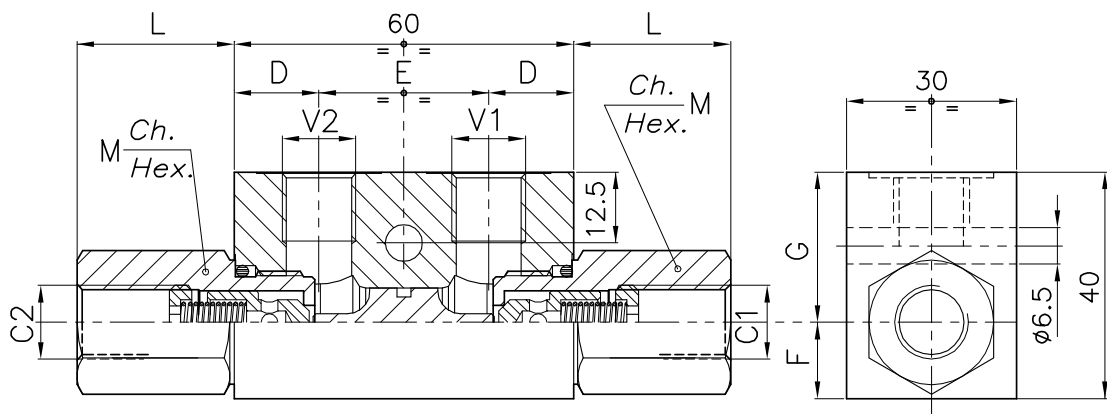
Weight



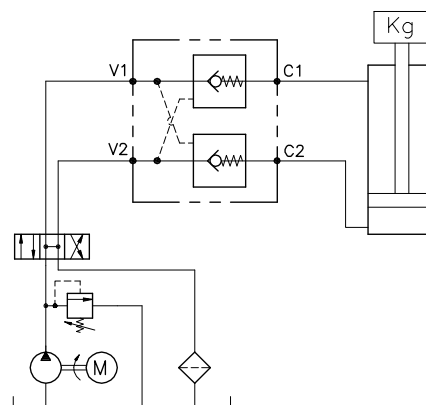
A-VNR-SO-DE-38-L

Viscosità olio 46 cSt a 50°C
Oil viscosity 46 cSt at 50°C

VALVOLA DI BLOCCO A DOPPIO EFFETTO PILOTATA
ALUMINIUM DOUBLE PILOT CHECK VALVE



ESEMPIO TIPICO DI CIRCUITO
TYPICAL CIRCUIT EXAMPLE



DIMENSIONI
DIMENSIONS

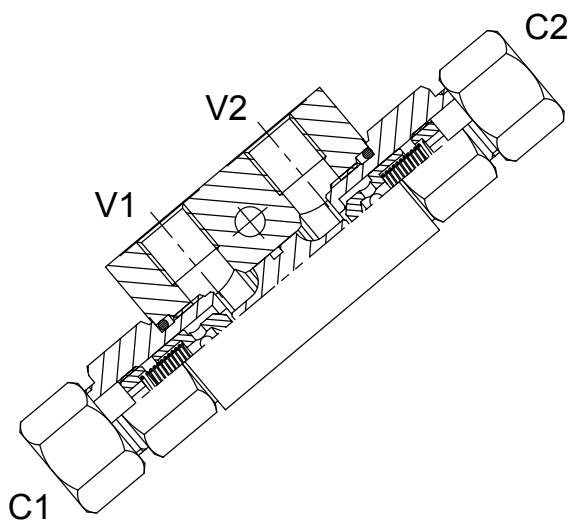
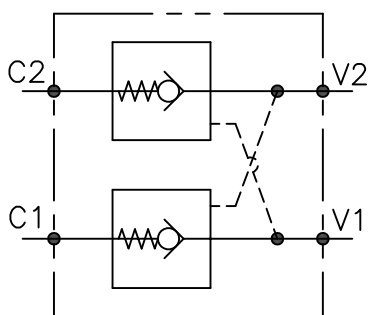
| NUMERO VALVOLA VALVE NUMBER | D | E | F | G | L | M | Attacchi Port size V2-C2 V1-C1 GAS (BSPP) | Luce nominale Rated size DN | Portata max Max flow-rate l/min - GPM |
|-----------------------------------|----|----|------|------|------|----|---|--------------------------------------|---|
| 360 | 17 | 27 | 14.5 | 25.5 | 31.5 | 24 | 3/8" | 6 | 35-9.2 |

CODICE DI ORDINAZIONE
HOW TO ORDER

003 360 0 W 0 . A

| Numero valvola / Valve number | Pistone di pilotaggio Pilot piston | Inizio apertura Cracking pressure | Materiale collettore Body material |
|-------------------------------|---|---|---------------------------------------|
| 360 | A O-RING sul pist. di pilotaggio Pilot piston O-RING O Senza O-RING sul pist. di pilotaggio No pilot piston O-RING | J 1 bar Molla (colore nero) Spring (black) W 6÷8 bar Molla (colore giallo) Spring (yellow) | Acciaio zincato Zinc plated steel |

A-VNR-SO-DE-...-D-L-...



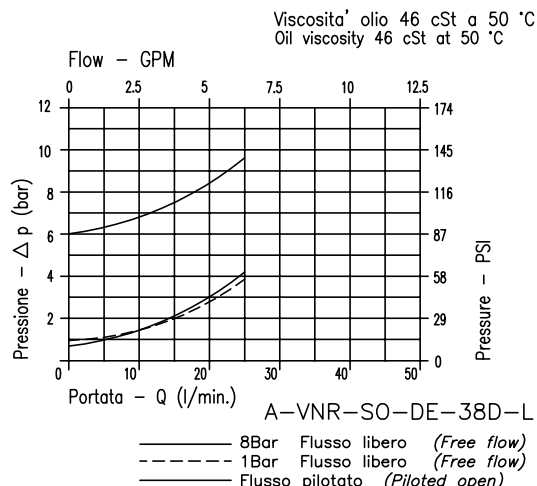
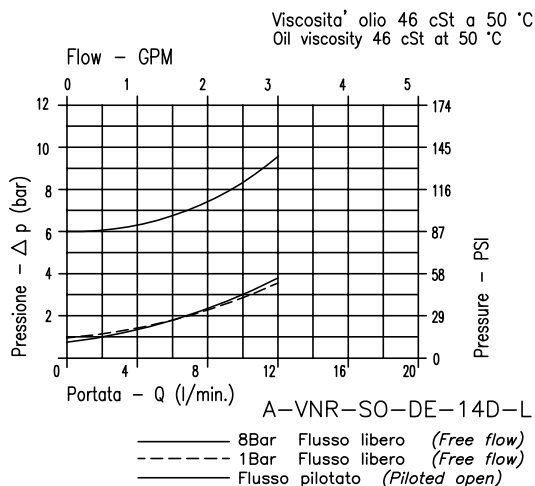
CARATTERISTICHE

Luce nominale
 Portata min/max
 Pressione max. di picco
 Pressione max. di taratura
 Rapporto di pilotaggio standard
 Temperatura ambiente
 Temperatura olio
 Filtraggio consigliato
 Coppia di serraggio
 Peso

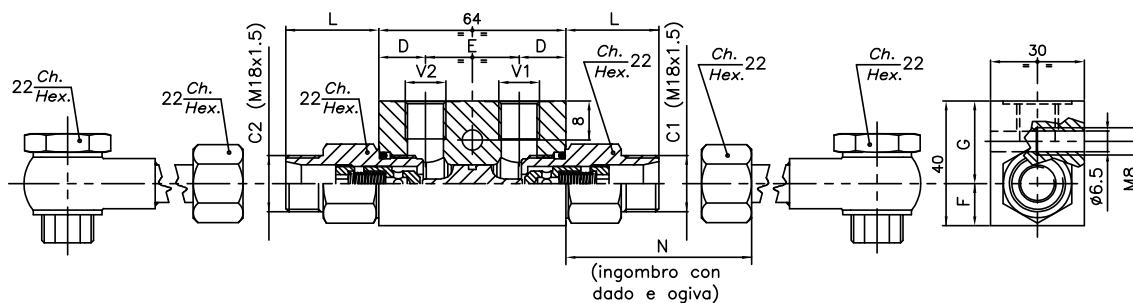
Pagina seguente/next page
Pagina seguente/next page
350 bar 5075 PSI
Pagina seguente/next page
Pagina seguente/next page
-30°C + 50°C
-30°C + 80°C
30 + 50
Pagina seguente/next page
0.7-0.9-0.1-2 kg

PERFORMANCE

Rated size
 Min/max flow-rate
 Max peak pressure
 Max setting pressure
 Standard pilot ratio
 Room temperature
 Oil temperature
 Recommended filtration
 Tightening torque
 Weight



VALVOLA DI BLOCCO A DOPPIO EFFETTO PILOTATA ALUMINIUM DOUBLE PILOT CHECK VALVE

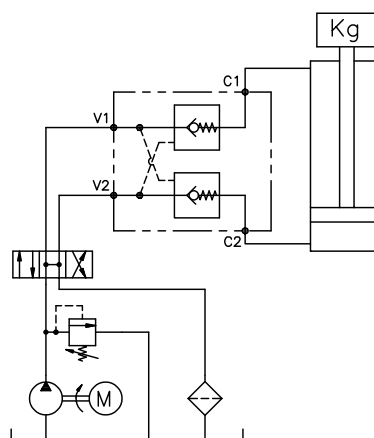


**A RICHIESTA
ON REQUEST**

CODICE KIT RUBO: Bullone, Rondelle, Occhio, Tubo.
PIPE KIT CODE: Bolt, Washers, Fitting, Pipe

| |
|-----------------------|
| KT-012-40 (M=40 mm) |
| KT-012-200 (M=200 mm) |
| KT-012-400 (M=400 mm) |

ESEMPIO TIPICO DI CIRCUITO TYPICAL CIRCUIT EXAMPLE



DIMENSIONI DIMENSIONS

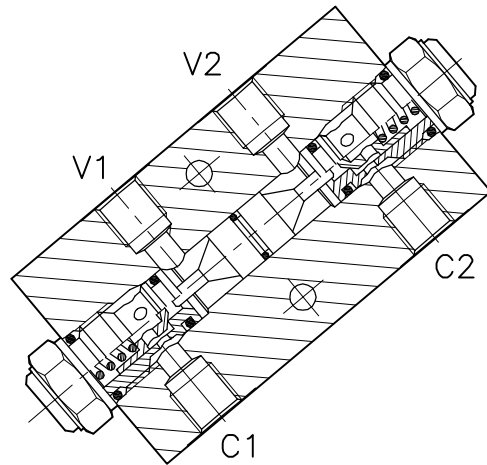
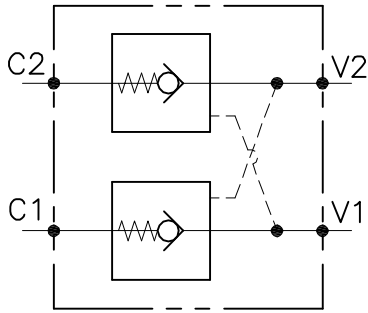
| N° VALVOLA VALVE NUMBER | SIGLA VALVOLA VALVE CODE | D | E | F | G | L | N | Attacchi Port size V1-V2 GAS (BSPP) | Luce nominale Rated size DN | Portata max max flow-rate l/min-GPM |
|----------------------------|-----------------------------|----|----|----|----|----|----|--|-----------------------------------|---|
| 252 | A-VNR-SO-DE-14D-L-... | 14 | 36 | 13 | 27 | 23 | 34 | 1/4" | 6 | 16-4.2 |
| 368 | A-VNR-SO-DE-38D-L-... | | | | | | | 3/8" | 8 | 35-9.2 |

CODICE DI ORDINAZIONE HOW TO ORDER

| | | | | | | | |
|-----|-----|---|---|---|----|---|--|
| N03 | 252 | 0 | W | 0 | .A | D | Con dado e ogiva With nut and cutting rings |
| 003 | 368 | 0 | W | 0 | | | |

| | Pistone di pilotaggio Pilot piston | Inizio apertura Cracking pressure | Materiale collettore Body material |
|---|--|--------------------------------------|---------------------------------------|
| A | O-RING sul pist. di pilotaggio Pilot piston O-RING | J 1 bar | Acciaio zincato Zinc plated steel |
| O | Senza O-RING sul pist. di pilotaggio No pilot piston O-RING | Z 3 - 4 bar | |
| | | W 6 - 8 bar | |

VNR-C-SO-DE-...-...



CARATTERISTICHE

| | |
|--------------------------|---------------------------|
| Luce nominale min/max | Vedi Pag. 18 |
| Portata min/max | Vedi Pag. 18 |
| Pressione di lavoro max. | 350 bar - 5075 PSI |
| Rapporto di pilotaggio | 4 : 1 |
| Temperatura ambiente | -30°C + 50°C |
| Temperatura olio | -30°C + 80°C |
| Filtraggio consigliato | 50 micron |
| Peso | 0.610 Kg. 1/4" GAS |
| Peso | 0.981 Kg. 3/8" GAS |
| Peso | 0.957 Kg. 1/2" GAS |

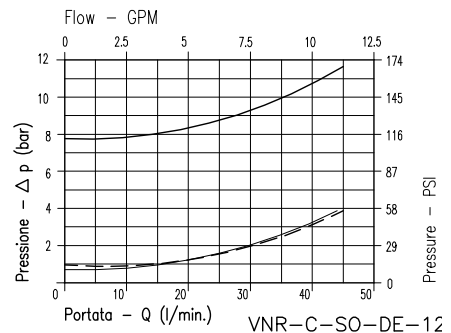
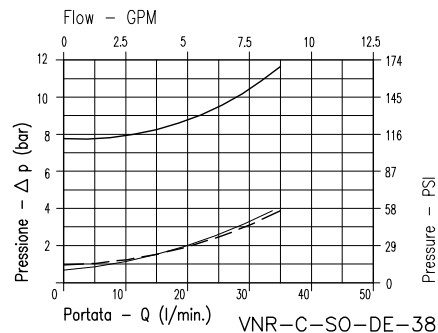
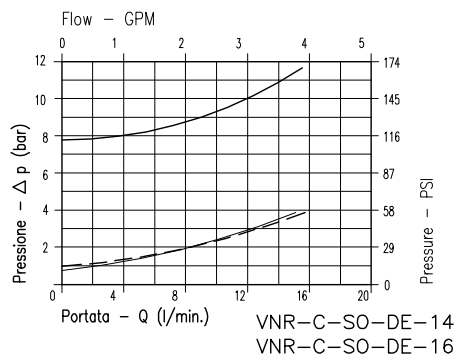
PERFORMANCE

| |
|------------------------|
| Min/max rated size |
| Min/max flow-rate |
| Max working pressure |
| Pilot ratio |
| Room temperature |
| Oil temperature |
| Recommended filtration |
| Weight |
| Weight |
| Weight |

8Bar Flusso libero
(free flow)

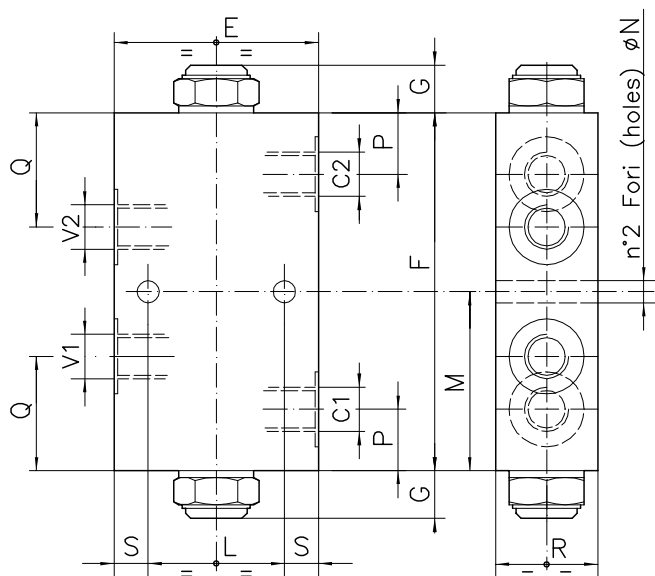
1Bar Flusso libero
(free flow)

Flusso pilotato
(piloted flow)

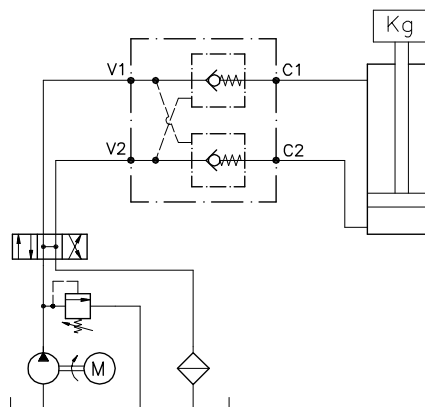


Viscosità olio 46 cSt a 50°C / Oil viscosity 46 cSt at 50°C

VALVOLA DI BLOCCO PILOTATA, A DOPPIO EFFETTO CON COLLETTORE IN LINEA
DOUBLE PILOT CHECK VALVE WITH IN LINE BODY



ESEMPIO TIPICO DI CIRCUITO
TYPICAL CIRCUIT EXAMPLE



DIMENSIONI
DIMENSIONS

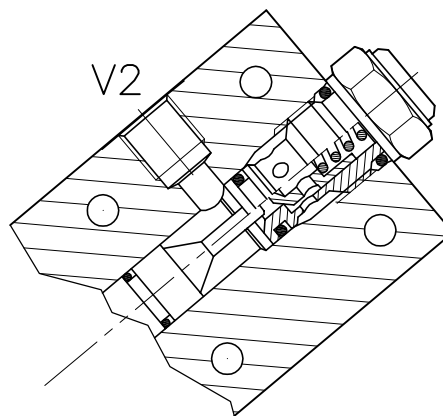
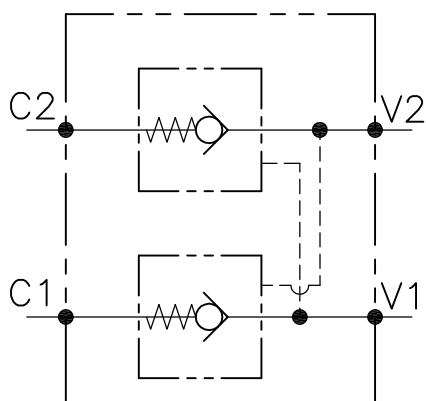
| NUMERO VALVOLA VALVE NUMBER | E | F | G | L | M | N | P | Q | R | S | Attacchi Port size V2-C2 V1-C1 GAS (BSPP) | Luce nominale Rated size DN | Portata max Max flow-rate l/min - GPM |
|-----------------------------------|----|-----|----|----|------|-----|------|------|----|----|---|--------------------------------------|---|
| 047 | 60 | 105 | 15 | 40 | 52.5 | 6.5 | 18 | 33.5 | 30 | 10 | 1/4" | 4 | 15-4 |
| 049 | 70 | 110 | 18 | 40 | 55 | 8.5 | 20.5 | 38 | 35 | 15 | 3/8" | 6 | 35-9.2 |
| 050 | 70 | 110 | 18 | 40 | 55 | 8.5 | 20.5 | 38 | 35 | 15 | 1/2" | 8 | 45-12 |

CODICE DI ORDINAZIONE
HOW TO ORDER

003 047 0 J 0 . A

| Numero valvola / Valve number | Pistone di pilotaggio Pilot piston | Inizio apertura Cracking pressure | Materiale collettore Body material |
|-------------------------------|--|---|---------------------------------------|
| 047 | A O-RING sul pist. di pilotaggio Pilot piston O-RING | J 1 bar Molla (colore nero) Spring (black) | Acciaio zincato Zinc plated steel |
| 049 | O Senza O-RING sul pist. di pilo- taggio No pilot piston O-RING | W 6÷8 bar Molla (colore giallo) Spring (yellow) | |
| 050 | | | |

VNR-C-SO-DE-...-FC2-...



CARATTERISTICHE

| | |
|--------------------------|-------------------------------------|
| Luce nominale min/max | DN 6/10 |
| Portata min/max | Vedi pag. seguente/next page |
| Pressione di lavoro max. | 350 bar - 5075 PSI |
| Rapporto di pilotaggio | 4 : 1 |
| Temperatura ambiente | -30°C + 50°C |
| Temperatura olio | -30°C + 80°C |
| Filtraggio consigliato | 50 micron |
| Peso | 0.450 Kg. 1/4" GAS |
| Peso | 0.740 Kg. 3/8" GAS |
| Peso | 0.724 Kg. 1/2" GAS |

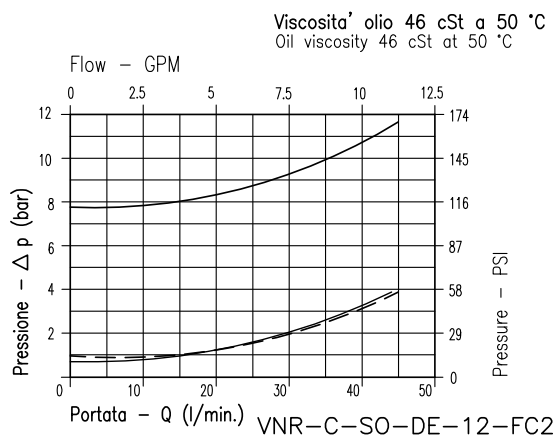
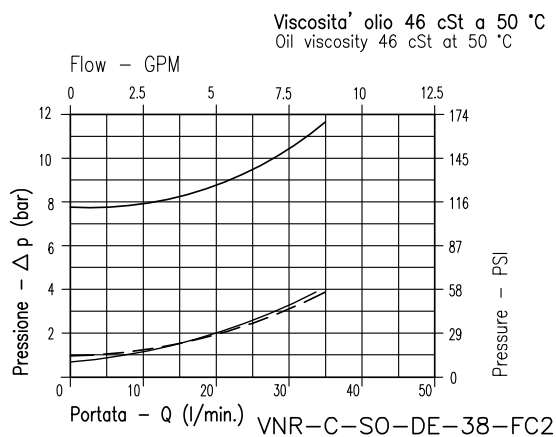
PERFORMANCE

| |
|------------------------|
| Min/max rated size |
| Min/max flow-rate |
| Max working pressure |
| Pilot ratio |
| Room temperature |
| Oil temperature |
| Recommended filtration |
| Weight |
| Weight |
| Weight |

8Bar Flusso libero
(free flow)

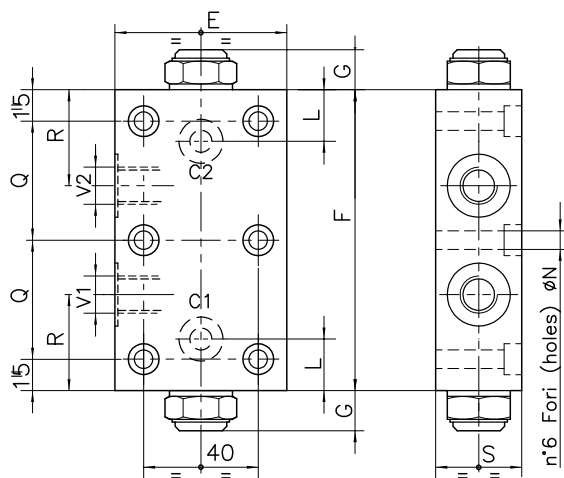
1Bar Flusso libero
(free flow)

Flusso pilotato
(piloted flow)

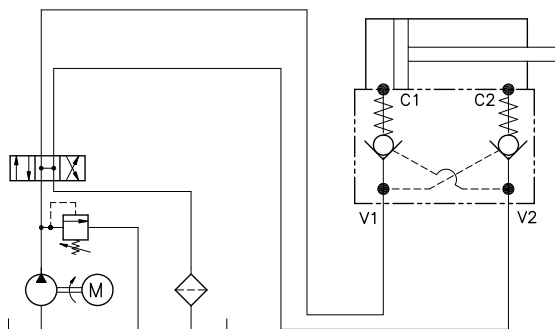


Viscosità olio 46 cSt a 50°C / Oil viscosity 46 cSt at 50°C

VALVOLA DI BLOCCO PILOTATA A CARTUCCIA, A DOPPIO EFFETTO CON COLLETTORE FLANGIATO
DOUBLE CARTRIDGE PILOT CHECK VALVE WITH FLANGEABLE BODY



ESEMPIO TIPICO DI CIRCUITO
TYPICAL CIRCUIT EXAMPLE



DIMENSIONI
DIMENSIONS

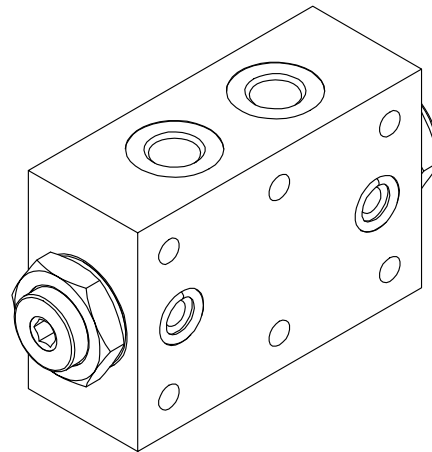
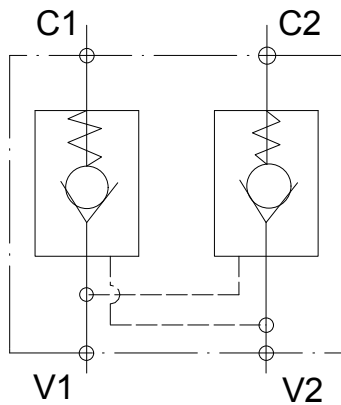
| NUMERO VALVOLA VALVE NUMBER | E | F | G | L | M | N | Q | R | S | Attacchi Port size V2-C2 V1-C1 GAS (BSP) | Rapporto di pilotaggio Pilot Ratio | Portata max Max flow-rate l/min - GPM |
|-----------------------------------|----|-----|----|------|---|-----|----|----|------|--|--|---|
| 294 | 60 | 90 | 12 | 14 | 0 | 6.5 | 35 | 29 | 34.5 | 3/8" | 5.4:1 | 30-7.9 |
| 349 | 69 | 110 | 17 | 22.5 | 0 | 8.5 | 40 | 38 | 34.5 | 1/2" | 4:1 | 45-12 |

CODICE DI ORDINAZIONE
HOW TO ORDER

003 349 0 J 0 . A

| | | | |
|-------------------------------|--|---|---------------------------------------|
| Numero valvola / Valve number | Pistone di pilotaggio Pilot piston | Inizio apertura Cracking pressure | Materiale collettore Body material |
| 294 | A O-RING sul pist. di pilotaggio Pilot piston O-RING | J 1 bar Molla (colore nero) Spring (black) | Acciaio zincato Zinc plated steel |
| 349 | O Senza O-RING sul pist. di pilotaggio No pilot piston O-RING | W 6-8 bar Molla (colore giallo) Spring (yellow) | |

A-VNR-CS-DE-14-FC2-FP-W



CARATTERISTICHE

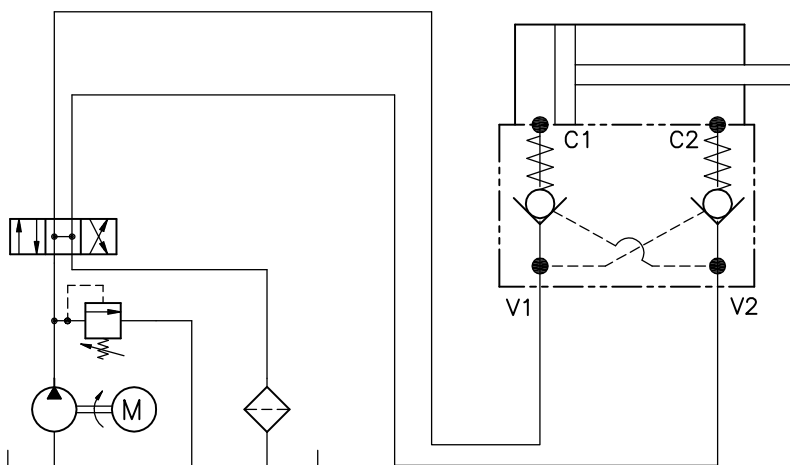
Portata min/max
Pressione max. di picco
Rapporto di pilotaggio
Collettore in acciaio zincato

30 litri/min
350 bar
7.1:1

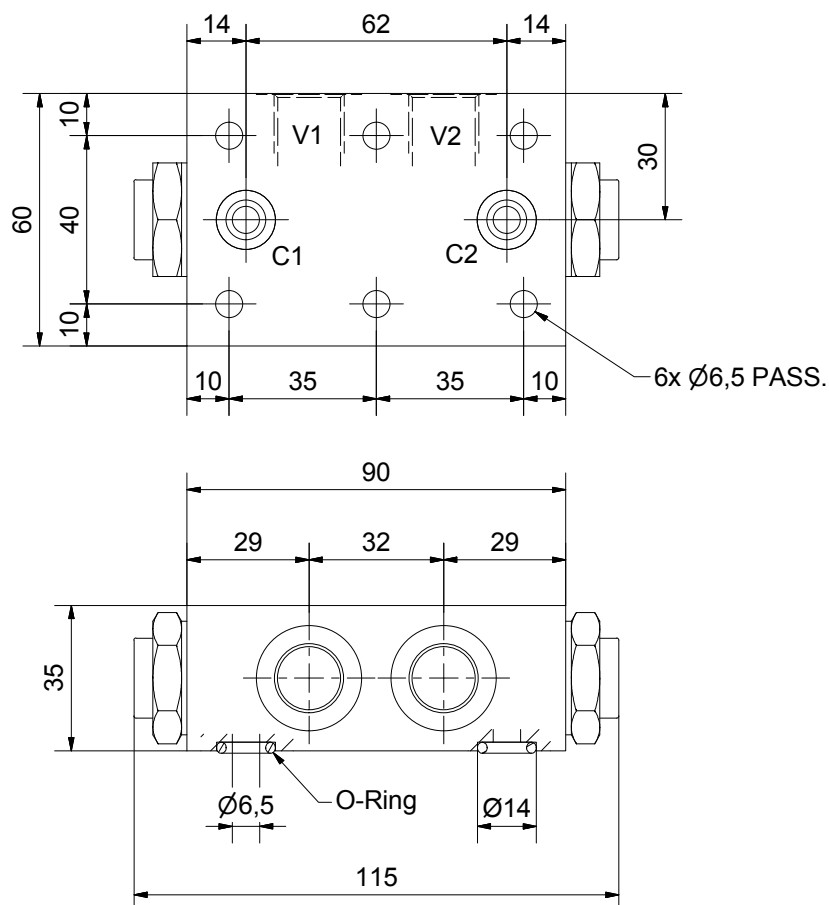
PERFORMANCE

Min/max flow-rate
Max peak pressure
Pilot ratio
Galvanized steel body

ESEMPIO TIPICO DI CIRCUITO TYPICAL CIRCUIT EXAMPLE



VALVOLA DI BLOCCO PILOTATA A CARTUCCIA, A DOPPIO EFFETTO CON COLLETTORE FLANGIATO
DOUBLE CARTRIDGE PILOT CHECK VALVE WITH FLANGEABLE BODY



DIMENSIONI
DIMENSIONS

| ATTACCHI PORTS | V1-V2 | C | Rapporto pilot. Pilot ratio | Peso valvola valve weight kg |
|----------------|-------|-----|-----------------------------|------------------------------|
| GAS/bspp | 1/4" | 6.5 | 7.1:1 | 1.395 |

CODICE DI ORDINAZIONE
HOW TO ORDER

003 514 0 W 0 . A

Pistone di pilotaggio
Pilot piston

- A O-RING sul pist. di pilotaggio
Pilot piston O-RING
- O Senza O-RING sul pist. di pilotaggio
No pilot piston O-RING

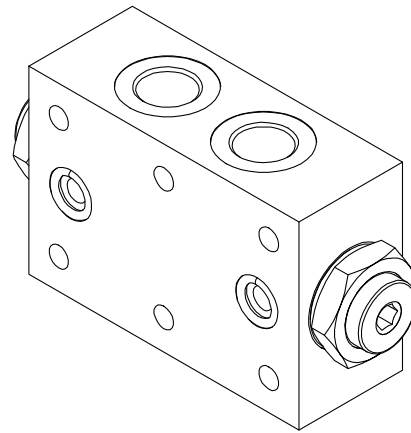
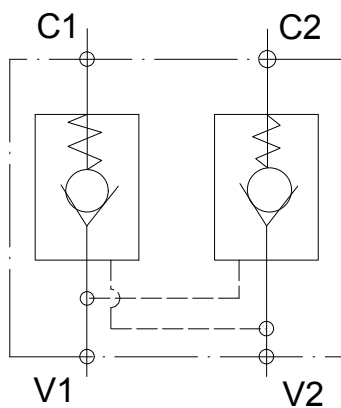
Inizio apertura
Cracking pressure

- J 1 bar
Molla (colore nero)
Spring (black)
- W 6÷8 bar
Molla (colore giallo)
Spring (yellow)

Materiale collettore
Body material

Acciaio zincato
 Zinc plated steel

A-VNR-CS-DE-38-FC2-FP-W



CARATTERISTICHE

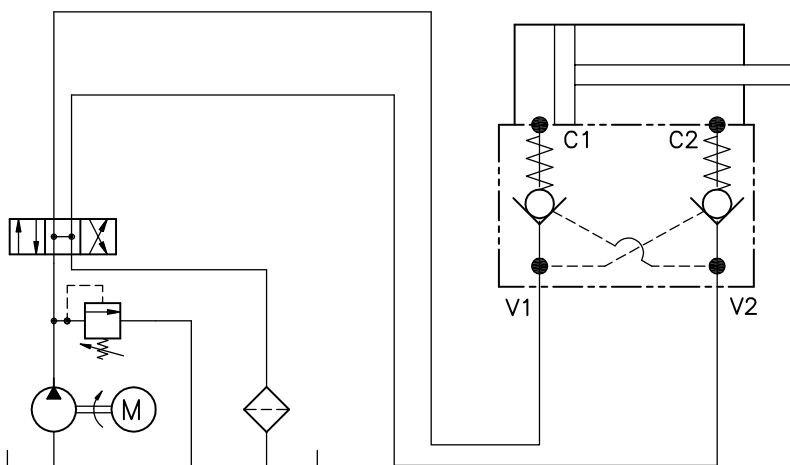
Portata min/max
Pressione max. di picco
Rapporto di pilotaggio

30 litri/min
350 bar
7.1:1

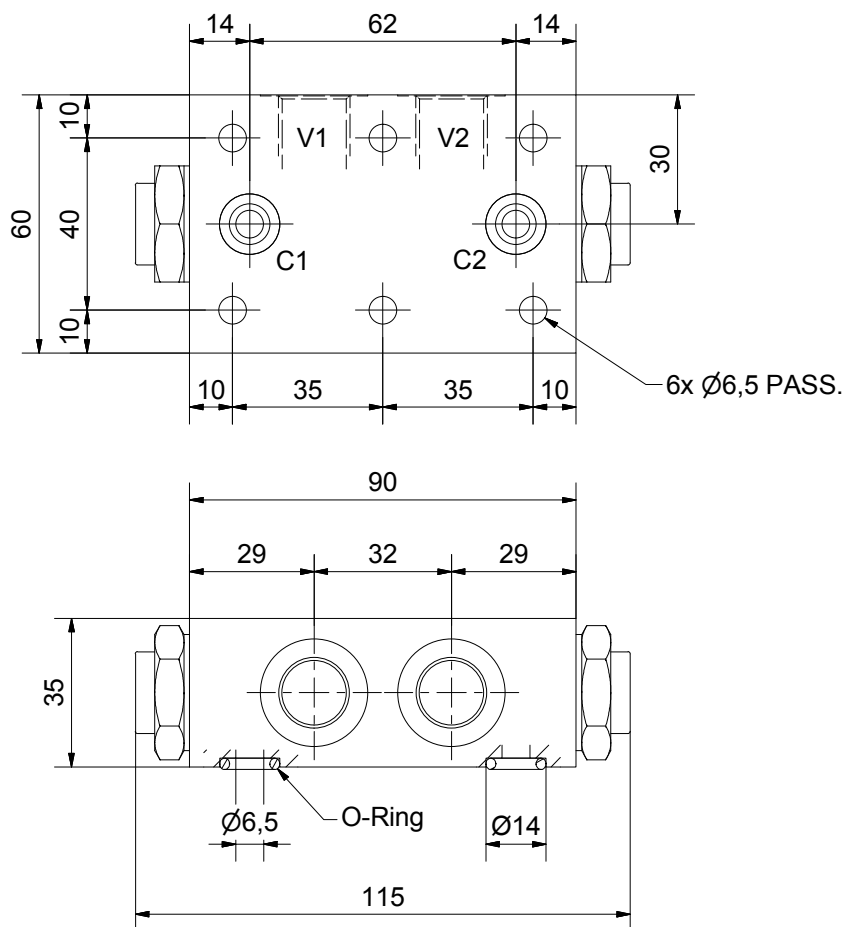
PERFORMANCE

Min/max flow-rate
Max peak pressure
Pilot ratio

ESEMPIO TIPICO DI CIRCUITO TYPICAL CIRCUIT EXAMPLE



VALVOLA DI BLOCCO PILOTATA A CARTUCCIA, A DOPPIO EFFETTO CON COLLETTORE FLANGIATO
DOUBLE CARTRIDGE PILOT CHECK VALVE WITH FLANGEABLE BODY



DIMENSIONI
DIMENSIONS

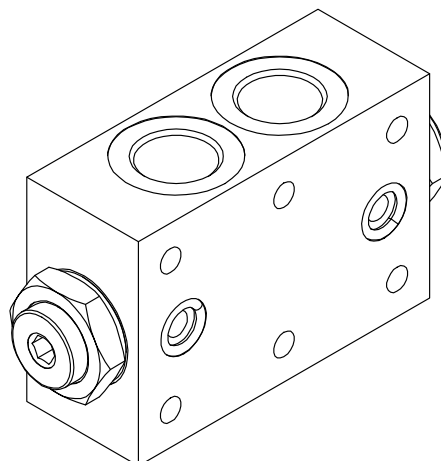
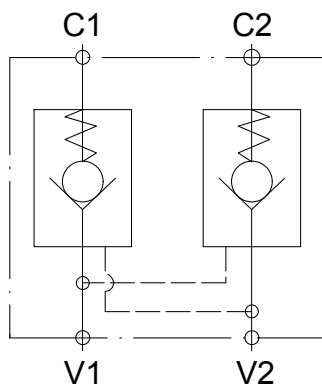
| ATTACCHI PORTS | V1-V2 | C | Rapporto pilot. Pilot ratio | Peso valvola valve weight kg |
|-------------------|-------|-----|--------------------------------|------------------------------------|
| GAS/bspp | 3/8" | 6.5 | 7.1:1 | 1.374 |

CODICE DI ORDINAZIONE
HOW TO ORDER

003 513 0 W 0 . A

| Pistone di pilotaggio Pilot piston | Inizio apertura Cracking pressure | Materiale collettore Body material |
|--|--------------------------------------|---------------------------------------|
| A O-RING sul pist. di pilotaggio Pilot piston O-RING | J 1 bar | Acciaio zincato Zinc plated steel |
| O Senza O-RING sul pist. di pilotaggio No pilot piston O-RING | W 6÷8 bar | |

A-VNR-DE-12-FC2-FP-W



CARATTERISTICHE

Portata min/max

35 litri/min

Pressione max. di picco

350 bar

Rapporto di pilotaggio

7.1

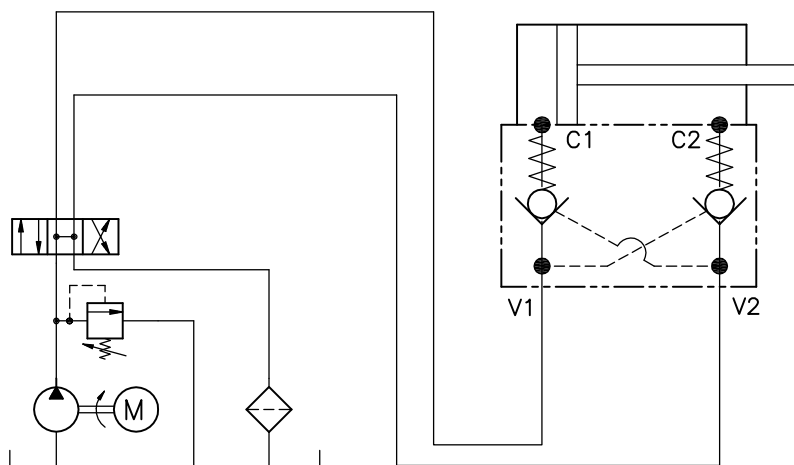
PERFORMANCE

Min/max flow-rate

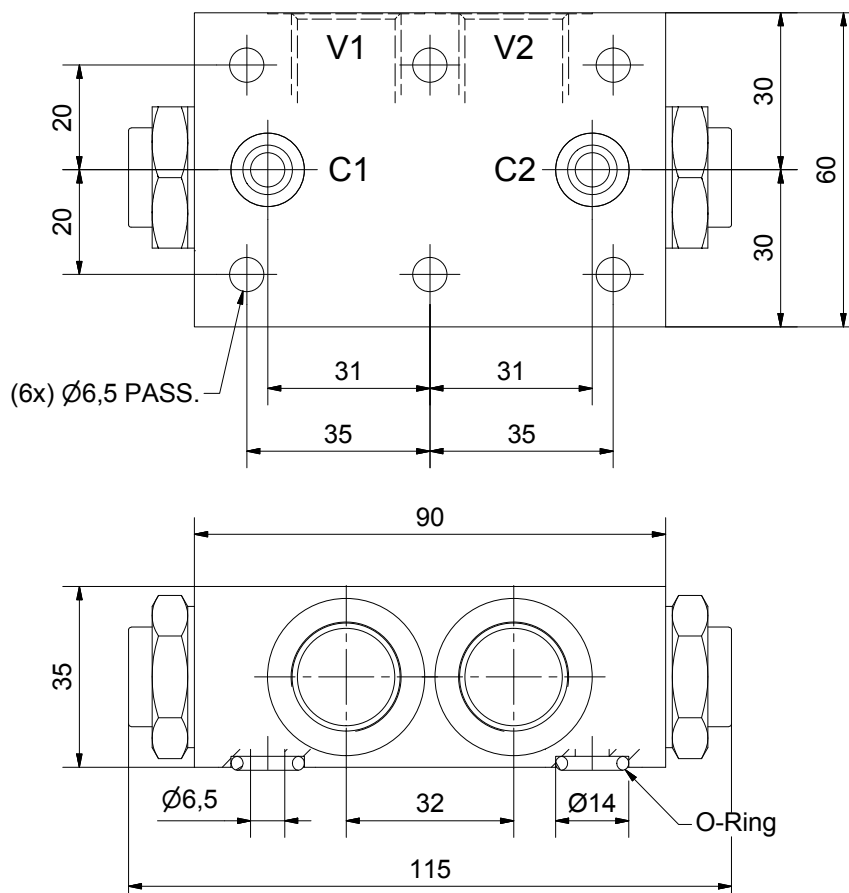
Max peak pressure

Pilot ratio

ESEMPIO TIPICO DI CIRCUITO TYPICAL CIRCUIT EXAMPLE



VALVOLA DI BLOCCO PILOTATA A CARTUCCIA, A DOPPIO EFFETTO CON COLLETTORE FLANGIATO
DOUBLE CARTRIDGE PILOT CHECK VALVE WITH FLANGEABLE BODY



DIMENSIONI
DIMENSIONS

| ATTACCHI PORTS | V1-V2 | C | Peso valvola valve weight kg |
|-------------------|-------|-----|------------------------------------|
| GAS/bspp | 1/2" | 6.5 | 1,329 |

CODICE DI ORDINAZIONE
HOW TO ORDER

003 515 0 W 0 . A

Pistone di pilotaggio
Pilot piston

- A O-RING sul pist. di pilotaggio
Pilot piston O-RING
- O Senza O-RING sul pist. di pilotaggio
No pilot piston O-RING

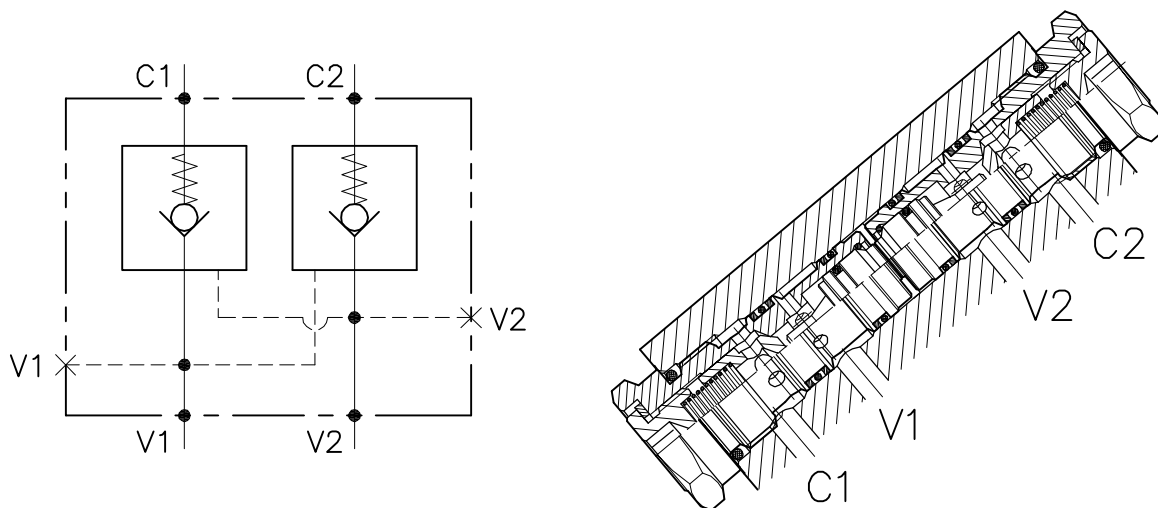
Inizio apertura
Cracking pressure

- J 1 bar
Molla (colore nero)
Spring (black)
- W 6÷8 bar
Molla (colore giallo)
Spring (yellow)

Materiale collettore
Body material

Acciaio zincato
 Zinc plated steel

VNR-C-SO-DE-50-SP-FCB-....-....

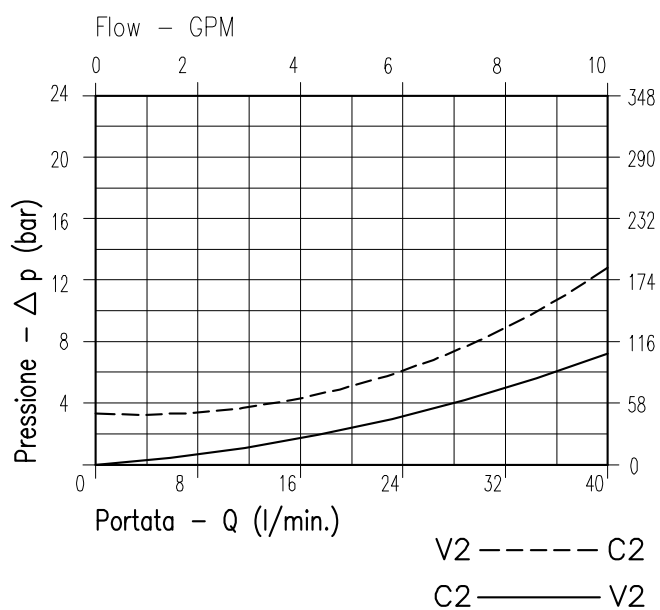


CARATTERISTICHE

| | |
|--------------------------|------------------------------------|
| Luce nominale | DN 6 |
| Portata min/max | 1/40 l/min. - 0.26/10.6 GPM |
| Pressione di lavoro max. | 350 bar - 5075 PSI |
| Rapporto di pilotaggio | 3 : 1 |
| Temperatura ambiente | -30°C + 50°C |
| Temperatura olio | -30°C + 80°C |
| Filtraggio consigliato | 50 micron |
| Peso | 1.093 Kg 3/8" GAS |
| Peso | 1.400 Kg 1/2" GAS |

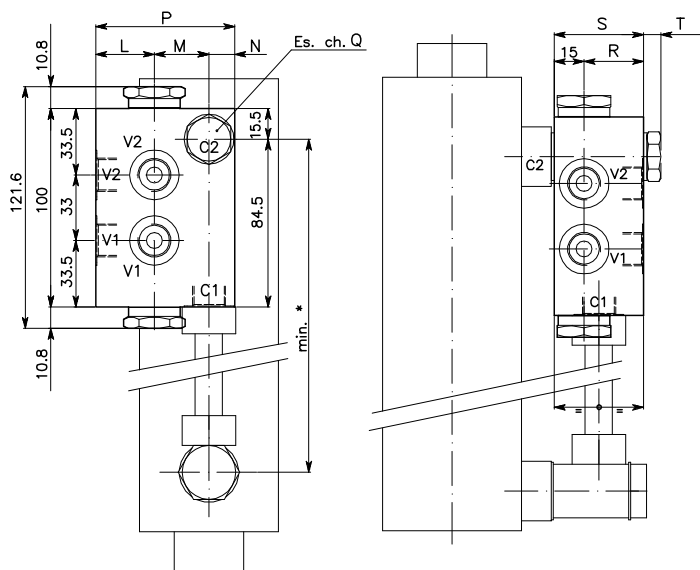
PERFORMANCE

| |
|------------------------|
| Rated size |
| Min/max flow-rate |
| Max working pressure |
| Pilot ratio |
| Room temperature |
| Oil temperature |
| Recommended filtration |
| Weight |
| Weight |

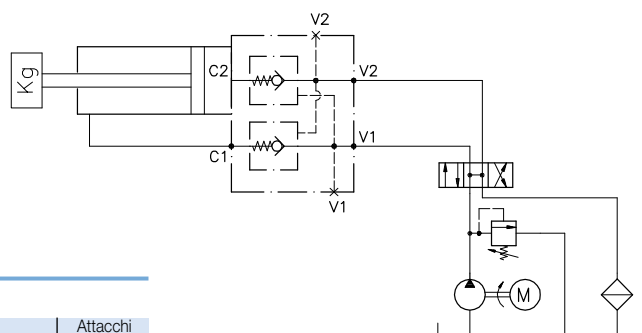


Viscosità olio 46 cSt a 50°C
Oil viscosity 46 cSt at 50°C

VALVOLA DI BLOCCO PILOTATA A CARTUCCIA, A DOPPIO EFFETTO CON COLLETTORE FLANGIATO DOUBLE CARTRIDGE PILOT CHECK VALVE WITH FLANGEABLE BODY



ESEMPIO TIPICO DI CIRCUITO TYPICAL CIRCUIT EXAMPLE

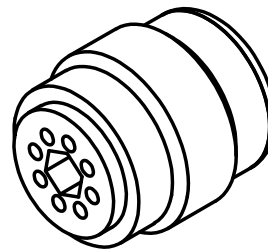
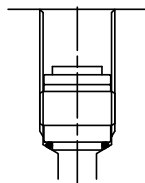
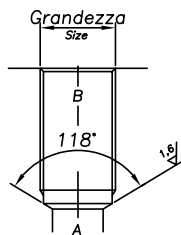
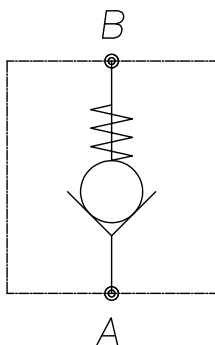


DIMENSIONI DIMENSIONS

| NUMERO VALVOLA VALVE NUMBER | L | M | N | P | Q | R | S | T | Attacchi Port size V2-C2 V1-C1 GAS (BSPP) |
|--------------------------------|------|------|----|----|----|----|----|----|---|
| 232 | 29.5 | 27.5 | 13 | 70 | 22 | 30 | 45 | 9 | 3/8" |
| 250 | 34 | 30 | 16 | 80 | 27 | 35 | 50 | 10 | 1/2" |

CODICE DI ORDINAZIONE HOW TO ORDER

| | | | | | |
|-------------------------------|--|---|---------------------------------------|---|-----|
| 003 | 232 | 0 | J | 0 | . A |
| Numero valvola / Valve number | Pistone di pilotaggio Pilot piston | Inizio apertura Cracking pressure | Materiale collettore Body material | | |
| 232 | A O-RING sul pist. di pilotaggio Pilot piston O-RING | J 1 bar Molla (colore nero) Spring (black) | Acciaio zincato Zinc plated steel | | |
| 250 | O Senza O-RING sul pist. di pilotaggio No pilot piston O-RING | W 6-8 bar Molla (colore giallo) Spring (yellow) | | | |



CARATTERISTICHE

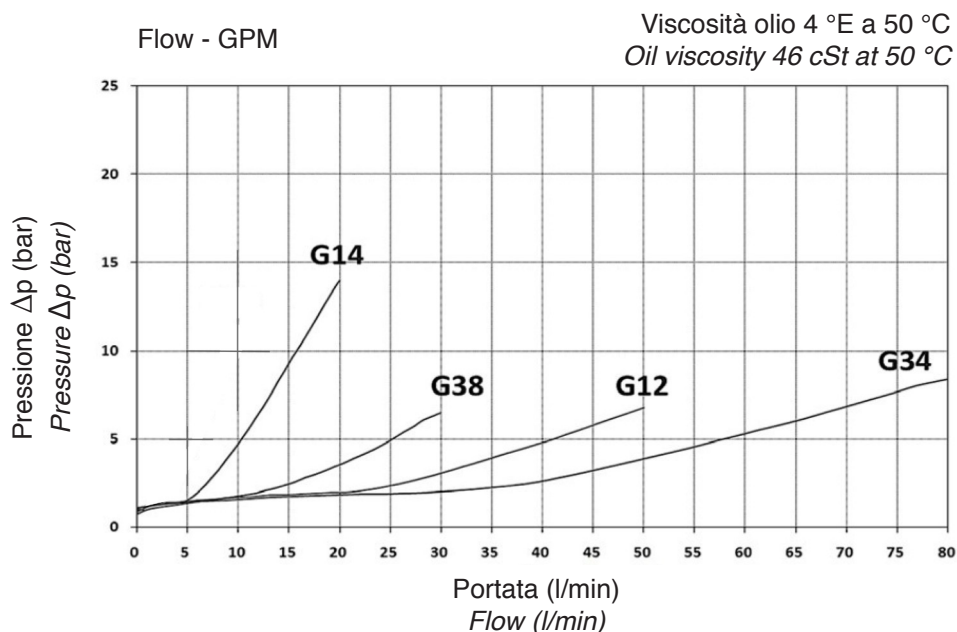
| | |
|-------------------------|---------------------------|
| Grandezza | 1/4" - 3/8" - 1/2" - 3/4" |
| Portata min/max | Vedi tabella - See table |
| Pressione max. di picco | 350 bar |
| Temperatura ambiente | -30°C + 50°C |
| Temperatura olio | -30°C + 80°C |
| Filtraggio consigliato | 30 |
| Peso | Vedi tabella - See table |
| Trafilamento interno | 0.15 - 0.25 cc/min |

PERFORMANCE

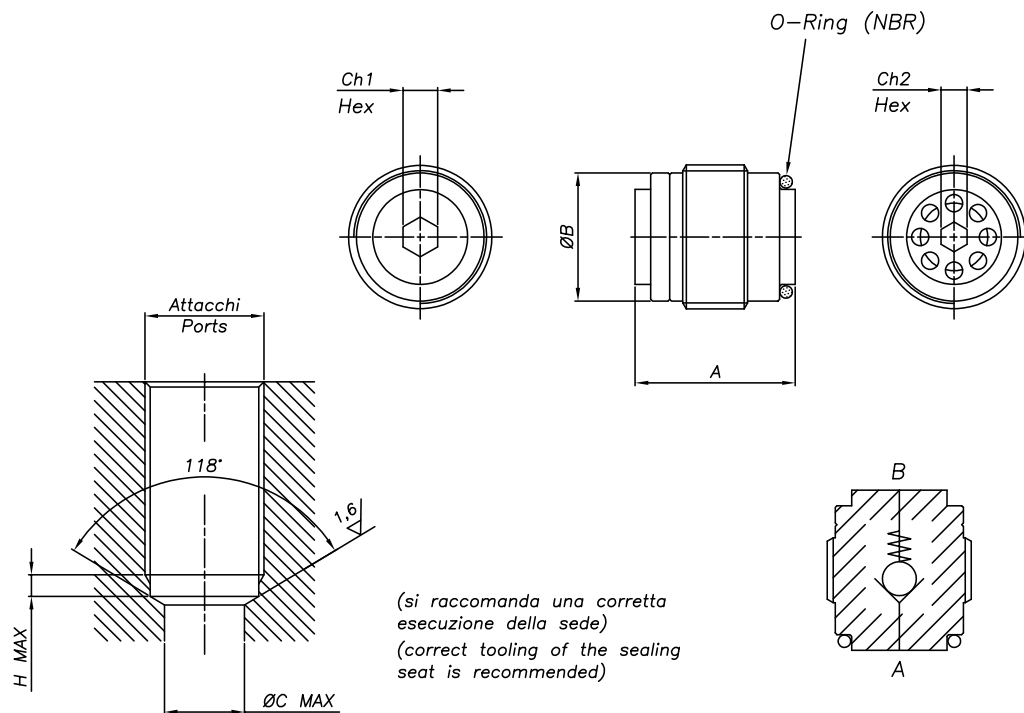
| |
|------------------------|
| Size |
| Min/max flow-rate |
| Max peak pressure |
| Room temperature |
| Oil temperature |
| Recommended filtration |
| Weight |
| Internal leakage |

Sono valvole unidirezionali ad inserto filettato particolarmente indicate per l'impegno nei circuiti integrati per le modeste dimensioni e la facilità di montaggio. il montaggio avviene in cavità filettate con spallamento a 118° per assicurare la perfetta tenuta. L'installazione a rovescio è possibile, ma non preferibile.

Screw-in, direct acting, in-line check valves. These unidirectional valves are particularly suitable to be used in integrated circuits due to small dimensions and ease of installation. Mounting is made inside threaded cavities with shoulder at 118° to ensure perfect sealing. Reversed installation is possible, but not recommended.



VALVOLE DI RITEGNO AD INSERTO INSERT - TYPE CHECK VALVES



DIMENSIONI DIMENSIONS

| N° VALVOLA VALVE NUMBER | ATTACCHI PORTS | A | B | C | H | Ch1 | Ch2 | Portata Max max flow l/min | Coppia ser- raggio Tightening torque Nm | Peso weight kg |
|-------------------------------|-------------------|------|------|----|----|-----|-----|----------------------------------|---|----------------------|
| | | mm | mm | mm | mm | mm | mm | | | |
| 183 | 1/4"GAS | 17 | 11,3 | 7 | 3 | 3 | 2.5 | 20 | 4 | 0.013 |
| 186 | 3/8"GAS | 18,5 | 14.8 | 9 | 3 | 4 | 3 | 30 | 6 | 0.021 |
| 279 | 1/2"GAS | 22.5 | 18.5 | 12 | 4 | 6 | 5 | 50 | 10 | 0.041 |
| 296 | 3/4"GAS | 28 | 24 | 17 | 5 | 8 | 8 | 80 | 20 | 0.082 |

CODICE DI ORDINAZIONE HOW TO ORDER

003 296 0 0 0

Numero valvola / Valve number

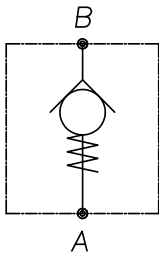
183

186

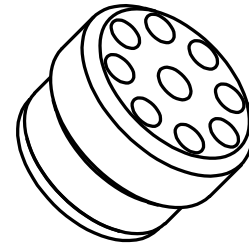
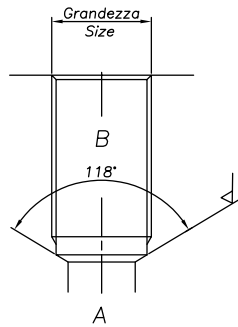
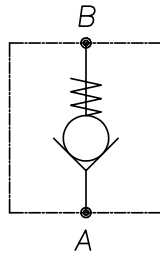
279

296

VRSR - ...



VRSP - ...



CARATTERISTICHE

| | |
|-------------------------|--------------------------|
| Grandezza | Vedi tabella - See table |
| Portata min/max | Vedi tabella - See table |
| Pressione max. di picco | 350 bar |
| Temperatura ambiente | -30°C + 50°C |
| Temperatura olio | -30°C + 80°C |
| Filtraggio consigliato | 30 |
| Peso | Vedi tabella - See table |
| Trafilamento interno | 0.10 - 0.15 cc/min |

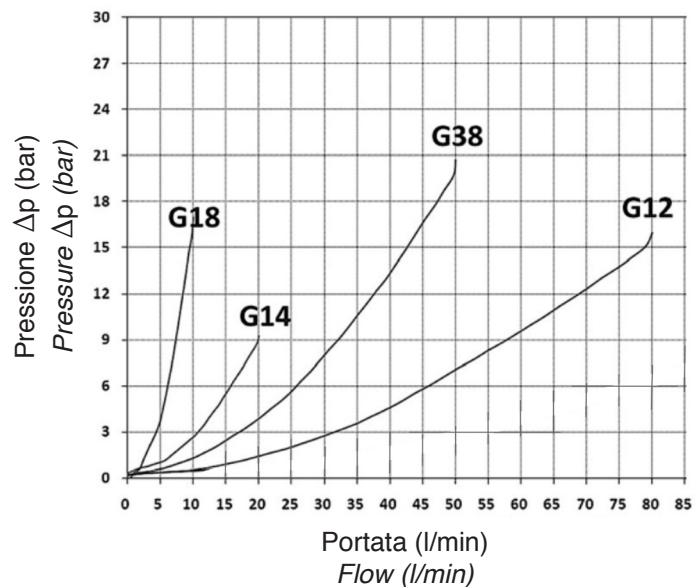
PERFORMANCE

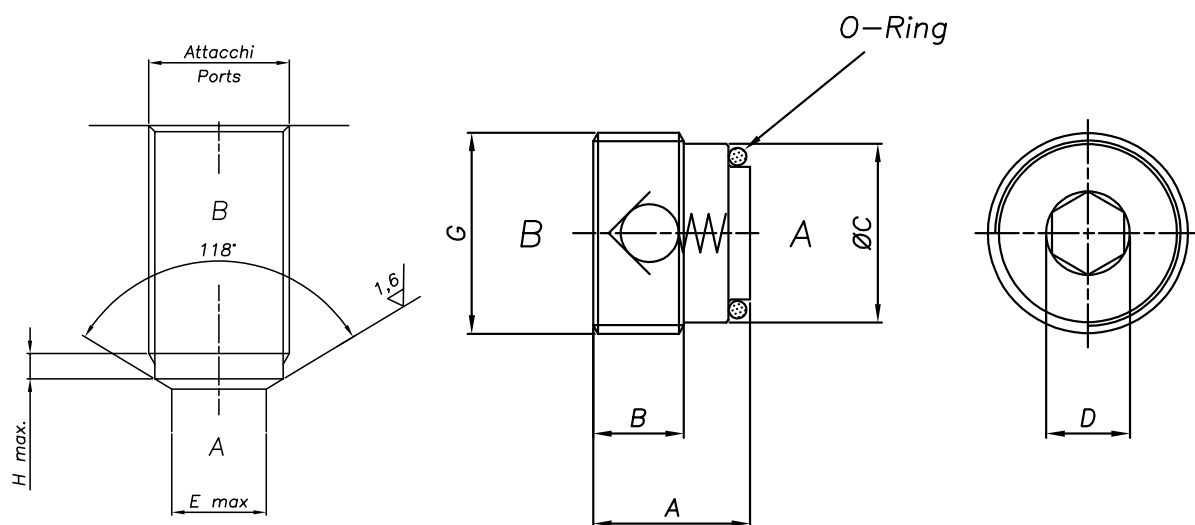
| |
|------------------------|
| Size |
| Min/max flow-rate |
| Max peak pressure |
| Room temperature |
| Oil temperature |
| Recommended filtration |
| Weight |
| Internal leakage |

Sono valvole unidirezionali ad inserto filettato particolarmente indicate per l'impegno nei circuiti integrati per le modeste dimensioni a la facoltà di montaggio.
Il montaggio avviene in cavità filettate con spallamento a 118° per assicurare la perfetta tenuta.

These Unidirectional valves are particularly suitable to be used in integrated circuits due to very small dimension and ease of installation.
Mounting is made inside threaded cavities with shoulder at 118° to ensure perfect sealing.

Viscosità olio 4 °E a 50 °C
Oil viscosity 46 cSt at 50 °C





DIMENSIONI
DIMENSIONS

| N° VALVOLA VALVE NUMBER | ATTACCHI PORTS | A | B | C | D | H | E | Portata Max max flow | Coppia serraggio Tightening torque | Peso weight kg |
|-------------------------------|-------------------|------|-----|------|----|----|----|----------------------------|---------------------------------------|----------------------|
| | G | mm | mm | mm | mm | mm | mm | l/min | Nm | kg |
| 508 | 1/8"GAS | 8 | 3.9 | 8.5 | 4 | 3 | 3 | 10 | 10 | 0.003 |
| 355 | 1/4"GAS | 10.2 | 5.5 | 11.5 | 6 | 3 | 7 | 20 | 15 | 0.007 |
| 356 | 3/8"GAS | 11.7 | 7 | 14.9 | 8 | 3 | 9 | 50 | 30 | 0.015 |
| 357 | 1/2"GAS | 13.5 | 7.9 | 18.7 | 10 | 3 | 12 | 80 | 40 | 0.023 |

CODICE DI ORDINAZIONE
HOW TO ORDER

003 508 0 0 0

Numero valvola / Valve number

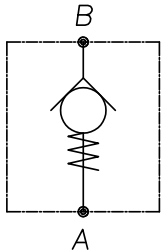
508

355

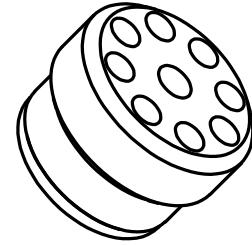
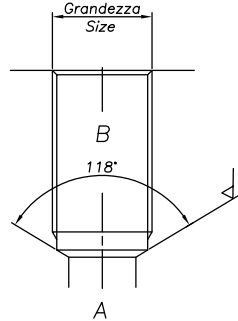
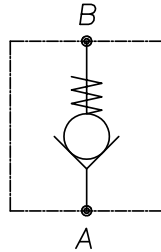
356

357

VRSR - ...



VRSP - ...



CARATTERISTICHE

Grandezza
 Portata min/max
 Pressione max. di picco
 Temperatura ambiente
 Temperatura olio
 Filtraggio consigliato
 Peso
 Trafilamento interno

Vedi tabella - See table
 Vedi tabella - See table
350 bar
-30°C + 50°C
-30°C + 80°C
30
 Vedi tabella - See table
0.10 - 0.15 cc/min

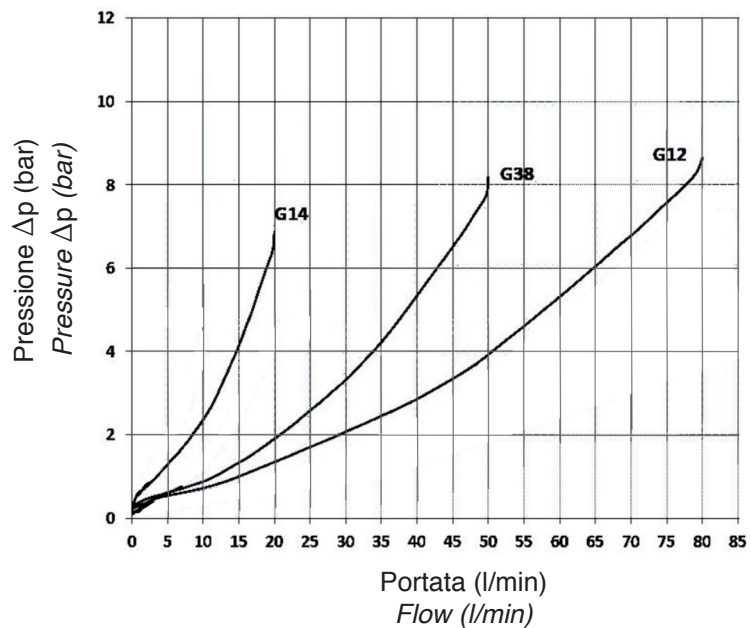
PERFORMANCE

Size
 Min/max flow-rate
 Max peak pressure
 Room temperature
 Oil temperature
 Recommended filtration
 Weight
 Internal leakage

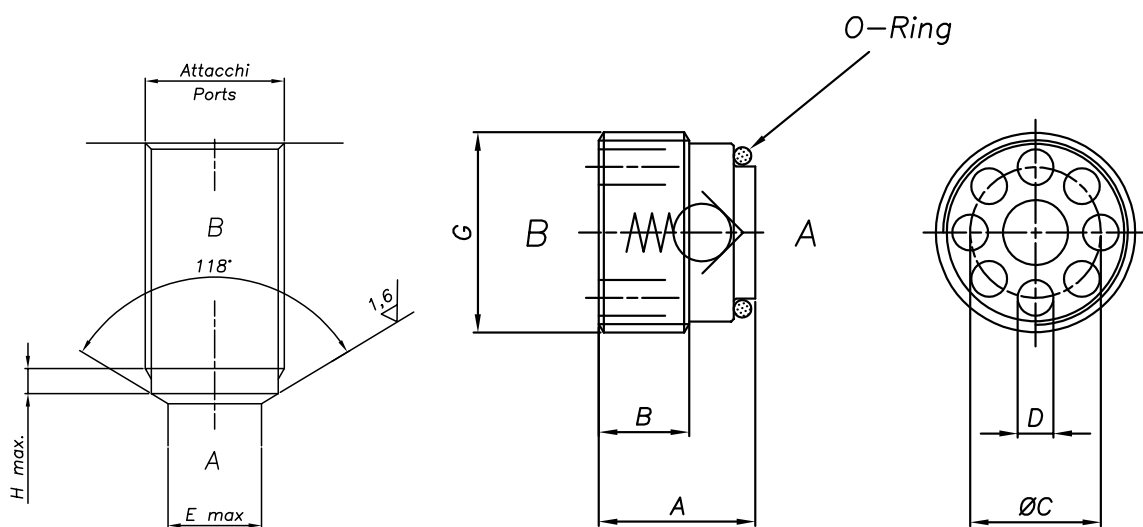
Sono valvole unidirezionali ad inserto filettato particolarmente indicate per l'impegno nei circuiti integrati per le modeste dimensioni e la facilità di montaggio. Il montaggio avviene in cavità filettate con spallamento a 118° per assicurare la perfetta tenuta.

These Unidirectional valves are particularly suitable to be used in integrated circuits due to very small dimension and ease of installation. Mounting is made inside threaded cavities with shoulder at 118° to ensure perfect sealing.

Viscosità olio 4 °E a 50 °C
 Oil viscosity 46 cSt at 50 °C



VALVOLE DI RITEGNO AD INSERTO
INSERT - TYPE CHECK VALVES



DIMENSIONI
DIMENSIONS

| N° VALVOLA VALVE NUMBER | ATTACCHI PORTS | A | B | C | D | H | E | Portata Max max flow | Coppia serraggio Tightening torque | Peso weight kg |
|-------------------------------|-------------------|------|-----|------|-----|----|----|----------------------------|---------------------------------------|----------------------|
| | | G | mm | mm | mm | mm | mm | | | |
| 295 | 1/4"GAS | 8.5 | 4.4 | 8.4 | 2.2 | 3 | 7 | 20 | 15 | 0.005 |
| 286 | 3/8"GAS | 11.3 | 6 | 11.1 | 3 | 3 | 9 | 50 | 30 | 0.011 |
| 287 | 1/2"GAS | 12.7 | 6.5 | 13.5 | 3.8 | 3 | 12 | 80 | 30 | 0.019 |

CODICE DI ORDINAZIONE
HOW TO ORDER

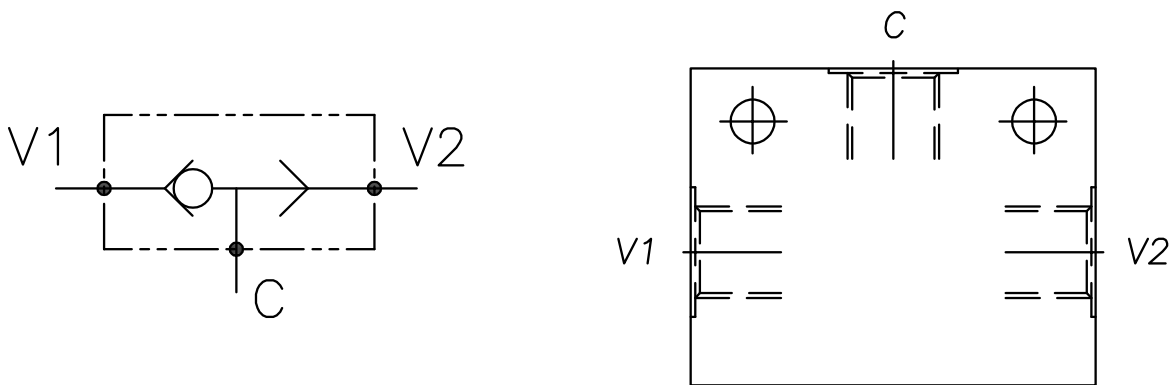
003 295 0 0 0

Numero valvola / Valve number

295

286

287



CARATTERISTICHE

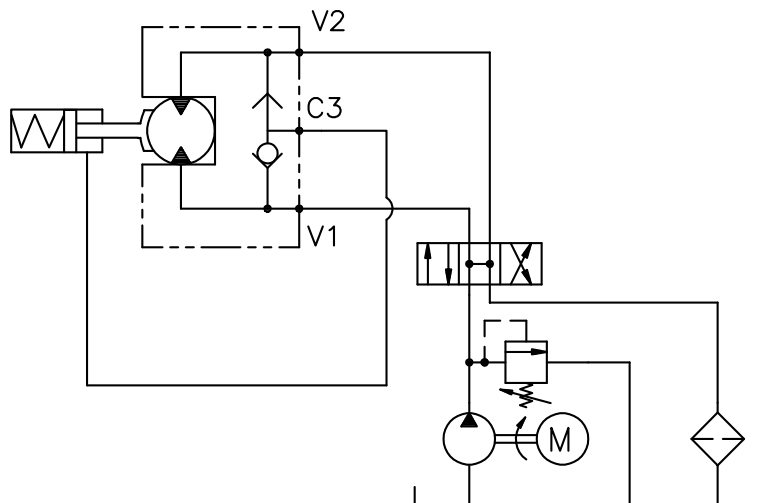
Portata min/max
 Pressione max. di picco
 Temperatura ambiente
 Temperatura olio
 Filtraggio consigliato
 Peso

Vedi tabella - See table
350 bar 5075 PSI
-30°C + 50°C
-30°C + 80°C
30 + 50
 Vedi tabella - See table

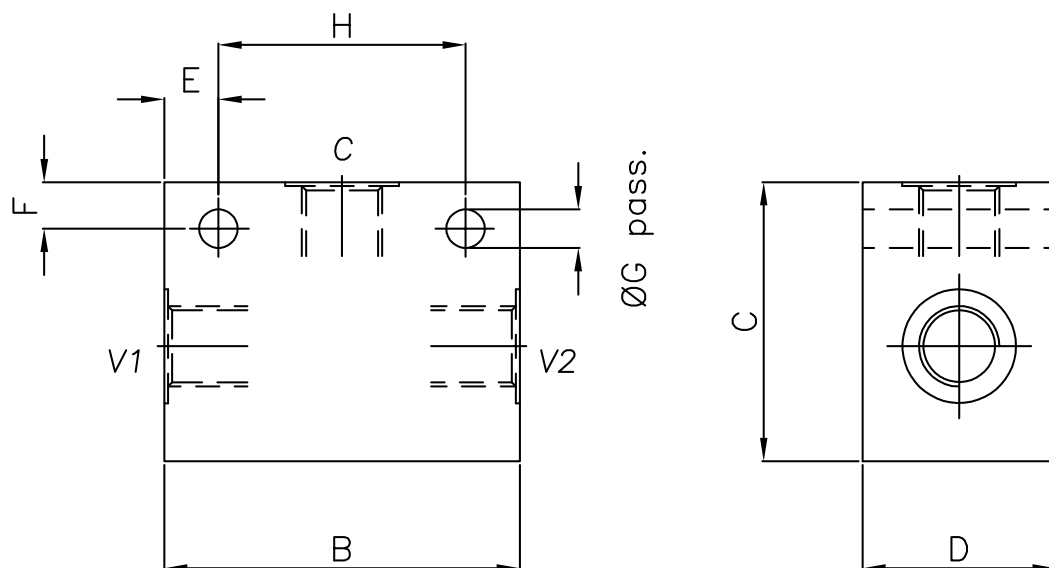
PERFORMANCE

Min/max flow-rate
 Max peak pressure
 Room temperature
 Oil temperature
 Recommended filtration
 Weight

ESEMPIO TIPICO DI CIRCUITO TYPICAL CIRCUIT EXAMPLE



VALVOLA SELETRICE
SHUTTLE VALVE



DIMENSIONI
DIMENSIONS

| N° VALVOLA VALVE NUMBER | DESCRIZIONE DESCRIPTION | B | C | D | E | F | G | H | Attacchi Port size V1-V2-C GAS | Portata Max max flow | Peso weight kg |
|----------------------------|----------------------------|----|----|----|----|----|-----|----|--------------------------------------|-------------------------|----------------------|
| 055 | VFF-14 | 52 | 35 | 25 | 9 | 8 | 6.5 | 34 | 1/4" | 20-5.3 | 0.30 |
| 230 | VFF-38 | 60 | 40 | 25 | 8 | 8 | 6.5 | 44 | 3/8" | 40-10.5 | 0.35 |
| 231 | VFF-12 | 70 | 50 | 30 | 10 | 10 | 8.5 | 50 | 1/2" | 60-15.8 | 0.67 |

CODICE DI ORDINAZIONE
HOW TO ORDER

003 231 0 0 0 . A

Numero valvola / Valve number

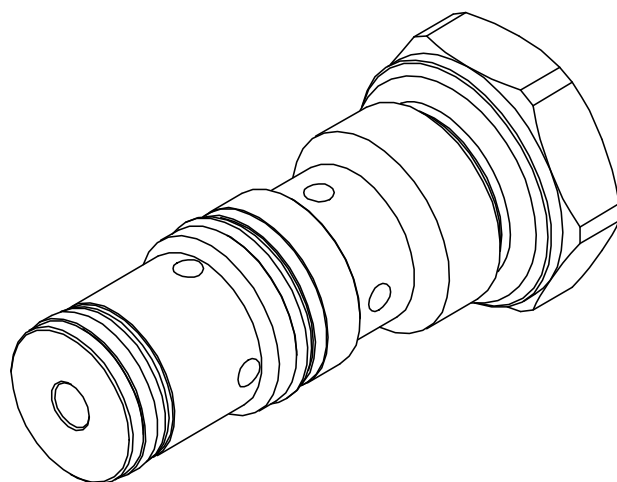
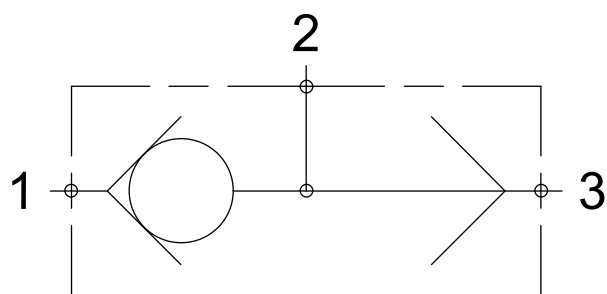
055

230

231

Materiale collettore
Body material

Acciaio zincato
Zinc plated steel



CARATTERISTICHE

Portata min/max

15 l/min

Pressione max. di picco

350 bar 5075 PSI

Portata nominale

10 l/min

Materiali

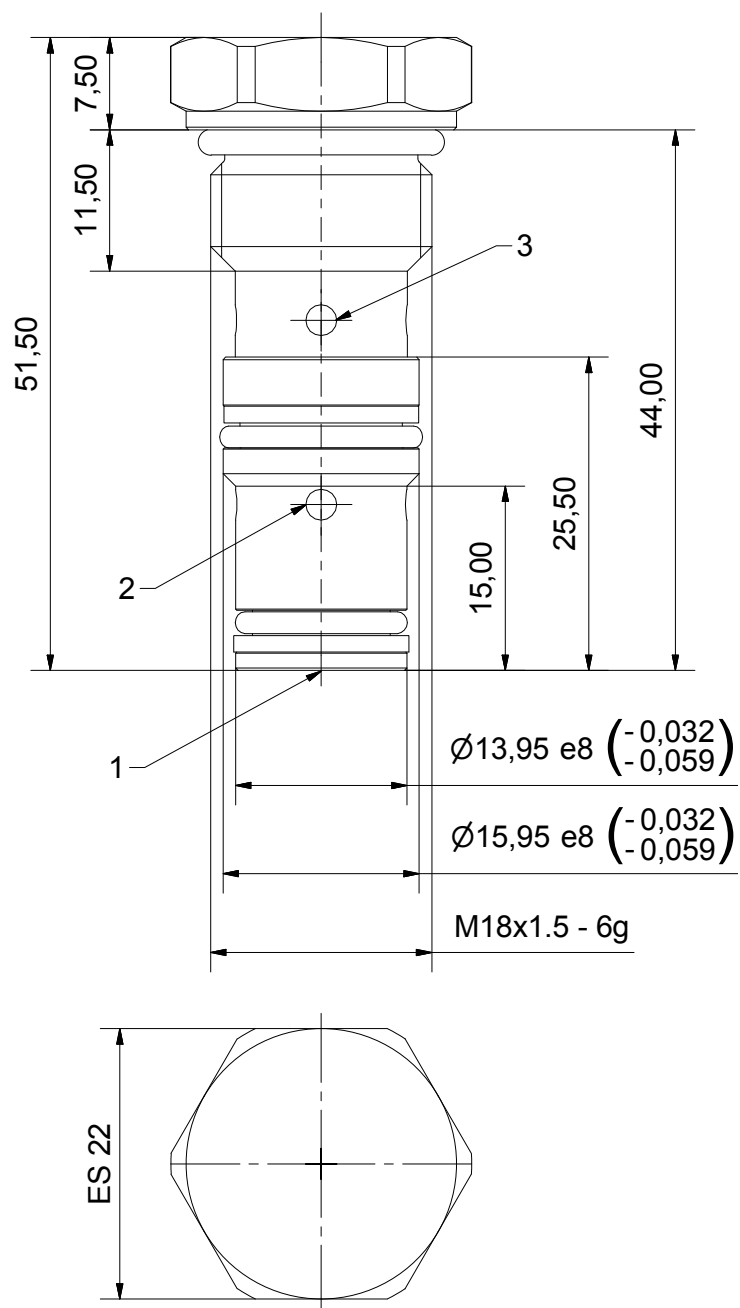
Acciaio steel

PERFORMANCE

Min/max flow-rate

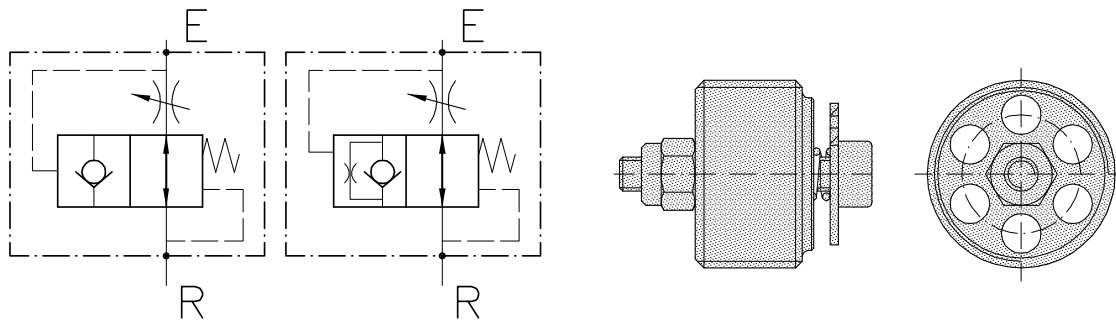
Max peak pressure

Room temperature
materials



CODICE DI ORDINAZIONE
HOW TO ORDER

003 376 0 0 0



CARATTERISTICHE

| | |
|------------------------|----------------------------------|
| Grandezza | 1/4" 3/8" 1/2" 3/4" 1" |
| Portata max | Vedi pag 26/see pag 26 |
| Pressione max. | 350 bar (1" size 350 bar) |
| Temperatura ambiente | -30°C + 50°C |
| Temperatura olio | -30°C + 80°C |
| Filtraggio consigliato | 30-50 micron |
| Peso | vedi pag 26/see pag 26 |

PERFORMANCE

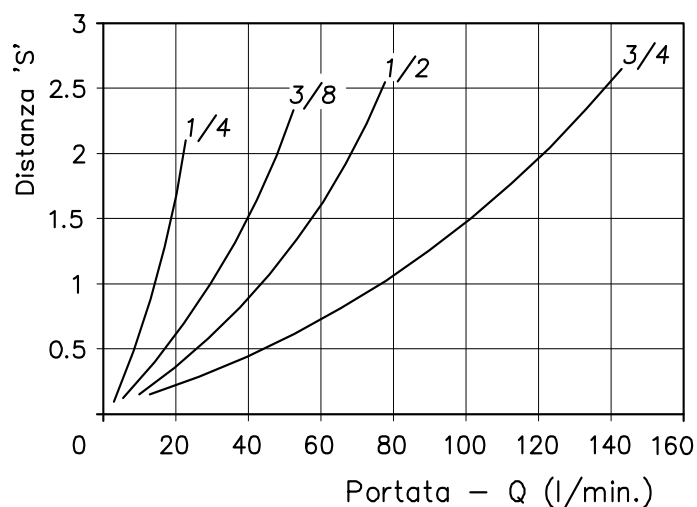
| |
|------------------------|
| Size |
| Max flow |
| Max pressure |
| Room temperature |
| Oil temperature |
| Recommended filtration |
| Weight |

Questa valvole sono in grado di bloccare il libero deflusso dell'olio da un attuatore destinato a sorreggere carichi elevati se, a causa della rottura di una tubazione di alimentazione, viene a mancare la contropressione idraulica. Vengono avvitate direttamente sull'utilizzo oppure su un manicotto da montare in linea vicinissimo all'attuatore. Si raccomanda l'uso di una valvola regolatrice di flusso a valle di queste valvole, la distanza "S" deve corrispondere ad una portata di almeno 50% superiore al flusso regolato. La valvola può essere fornita:

- con apertura "S" standard o a richiesta
- con eventuale foro su piattello di tenuta per discesa lenta a valvola chiusa (foto a richiesta)

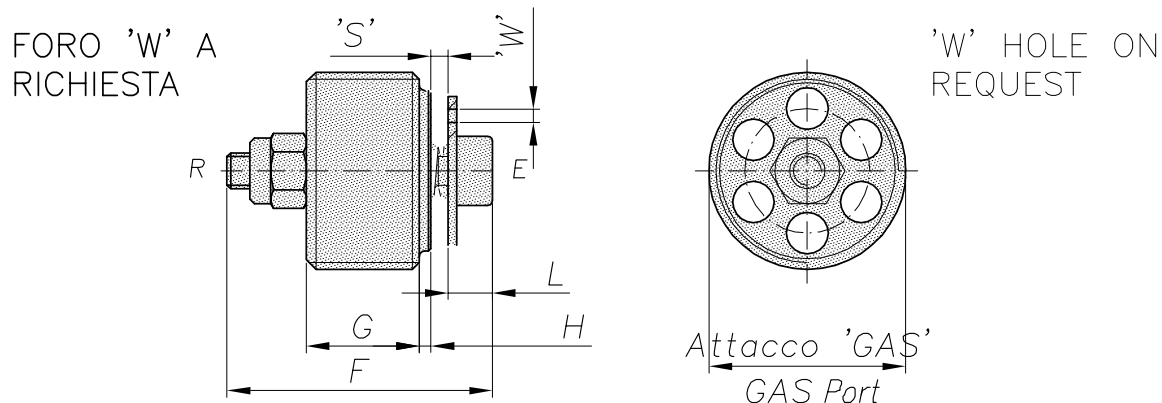
The valves block the oil discharged by an actuator holding heavy loads in case the load lowering speed exceeds the medium acceptable speed, for example in case of hose failure. The valves should be screwed either directly on the actuator or on the in-line manifold, mounted as close as possible to the actuator. It is recommended to fit a flow regulator downstream the hose burst valve and the "S" distance should be at least 50% higher than the regulated flow. The valve can feature:

- an "S" length (standard value or optional value)
- a hole on the sealing plate for the slow lowering with valve closed (picture available upon request)



Viscosità olio 46 cSt a 50°C
Oil viscosity 46 cSt at 50°C

VALVOLA DI BLOCCO DI SICUREZZA PER TUBAZIONI
HOSE BURST PROTECTION, INSERT-TYPE

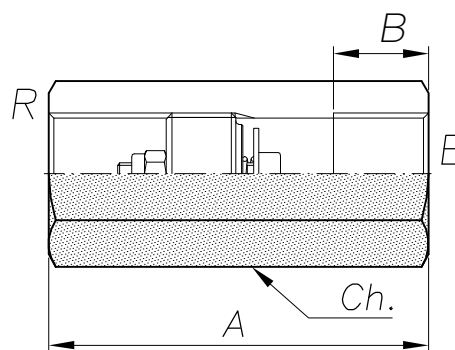


CODICE DI ORDINAZIONE
ORDERING CODE

| CODICE ORDINAZIONE ORDERING CODE | F | G | H | L | Attacchi port size GAS | Luce nominale rated size DN | Portata Max max flow l/min | Peso weight kg | Coppia serraggio Tightening Torque Nm |
|-------------------------------------|----|----|---|-----|------------------------------|--------------------------------------|----------------------------------|----------------------|--|
| 003.059.000 | 19 | 6 | 2 | 4.5 | 1/4" | 6 | 25-5.5 | 0.01 | 4 |
| 003.060.000 | 23 | 9 | 2 | 5 | 3/8" | 8 | 45-9.9 | 0.015 | 5 |
| 003.061.000 | 29 | 11 | 2 | 6 | 1/2" | 11 | 70-15.4 | 0.025 | 8 |
| 003.062.000 | 34 | 16 | 2 | 6 | 3/4" | 16 | 140-30.8 | 0.01 | 10 |
| 003.076.000 | 40 | 18 | 2 | 9 | 1" | 19 | 180-39.6 | 0.098 | 15 |

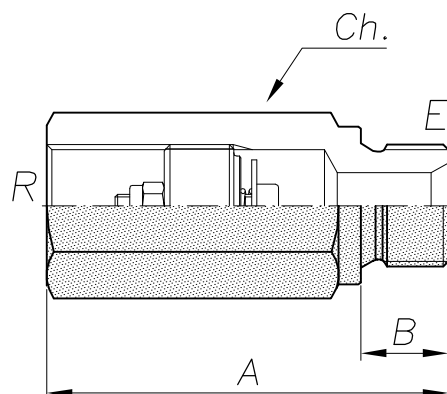
COLONNETTE CON VALVOLE "VP" **FEMMINA-FEMMINA**
SLEEVES WITH "VP" VALVES **FEMALE-FEMALE**

| CODICE ORDINAZIONE ORDERING CODE | A | B | Ch | Attacchi port size GAS (BSPP) | Peso weight kg |
|-------------------------------------|----|----|----|-------------------------------------|----------------------|
| 003.067.000 | 59 | 12 | 19 | 1/4" | 0.07 |
| 003.068.000 | 64 | 12 | 22 | 3/8" | 0.095 |
| 003.069.000 | 73 | 14 | 27 | 1/2" | 0.145 |
| 003.070.000 | 76 | 16 | 32 | 3/4" | 0.22 |
| 003.077.000 | 86 | 20 | 41 | 1" | 0.435 |



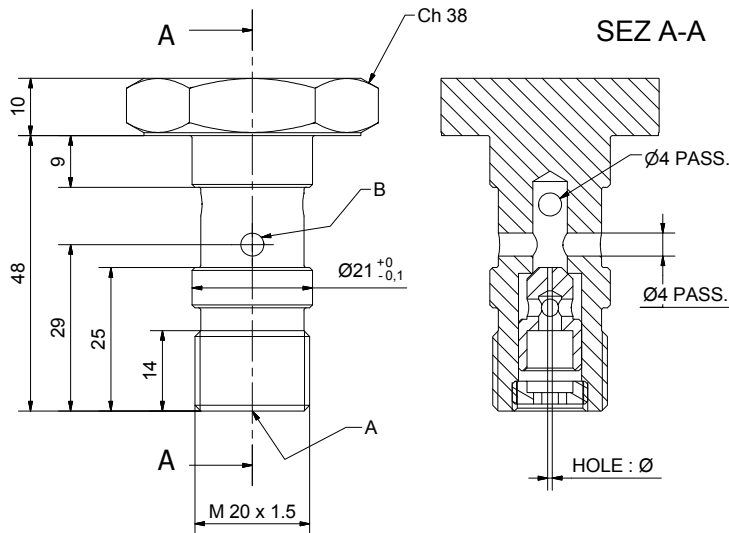
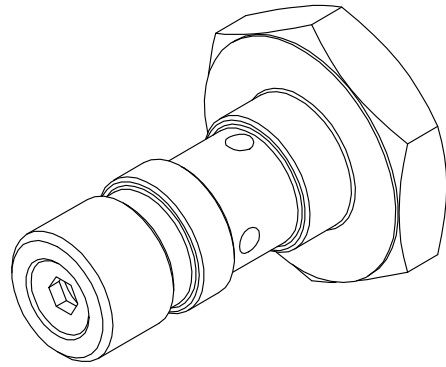
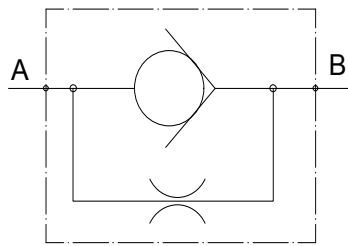
COLONNETTE CON VALVOLE "VP" **MASCHIO-FEMMINA**
SLEEVES WITH "VP" VALVES **MALE-FEMALE**

| CODICE ORDINAZIONE ORDERING CODE | A | B | Ch | Attacchi port size GAS (BSPP) | Peso weight kg |
|-------------------------------------|----|----|----|-------------------------------------|----------------------|
| 003.063.000 | 50 | 11 | 19 | 1/4" | 0.07 |
| 003.064.000 | 60 | 12 | 22 | 3/8" | 0.095 |
| 003.065.000 | 65 | 16 | 27 | 1/2" | 0.145 |
| 003.066.000 | 78 | 17 | 32 | 3/4" | 0.22 |
| 003.078.000 | 92 | 17 | 41 | 1" | 0.436 |



VNR-BL-ST-2015

VALVOLA DI BLOCCO PASSAGGIO CALIBRATO - CHECK VALVE WITH CALIBRATED FLOW



CARATTERISTICHE

Portata min/max

10 l/mm

Pressione max. di picco

350 bar

Materiale

Acciaio zincato/zinc plated steel

Coppia di serraggio

30 - 50

PERFORMANCE

Min/max flow-rate

Max peak pressure

Material

Tightening torque

CODICE DI ORDINAZIONE

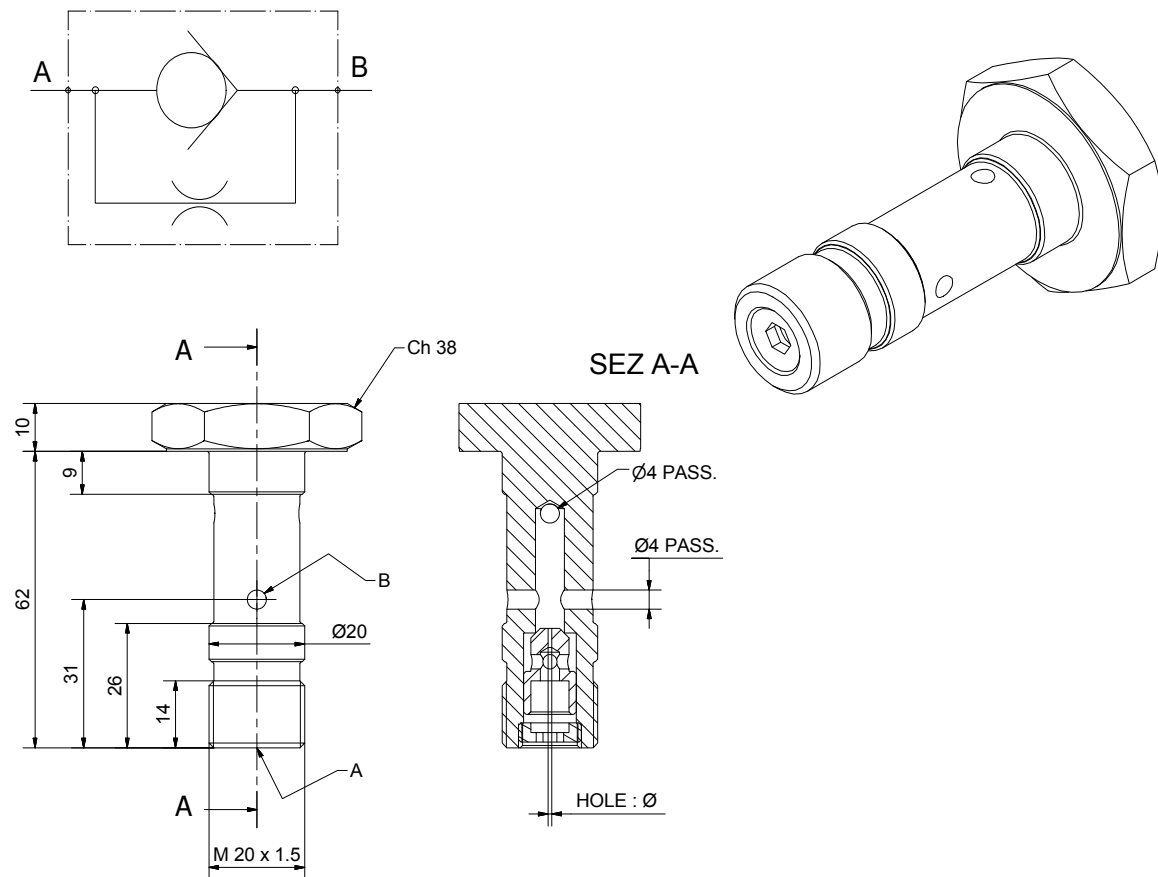
HOW TO ORDER

003 353 0 0 0 0 B

| Numero valvola / Valve number | Orifice diameter |
|-------------------------------|------------------|
| 003 353 000 0B | HOLE Ø 0.8 |
| 003 353 000 0C | HOLE Ø 1 |
| 003 353 000 0D | HOLE Ø 1.25 |
| 003 353 000 0E | HOLE Ø 1.5 |
| 003 353 000 0F | HOLE Ø 1.75 |
| 003 353 000 0G | HOLE Ø 2 |
| 003 353 000 0H | HOLE Ø 2.5 |
| 003 353 000 0I | HOLE Ø 2.7 |

VNR-BL-ST-2015-62 mm

VALVOLA DI BLOCCO PASSAGGIO CALIBRATO - CHECK VALVE WITH CALIBRATED FLOW



CARATTERISTICHE

Portata min/max
Pressione max. di picco
Materiale
Coppia di serraggio

10 l/mm

350 bar

Acciaio zincato/zinc plated steel

30 - 50

PERFORMANCE

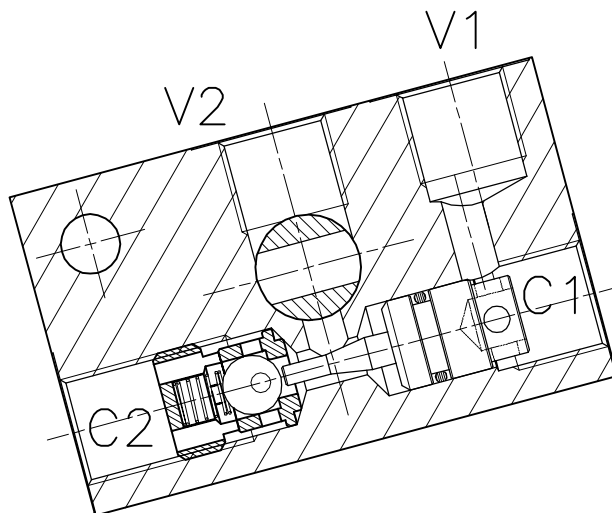
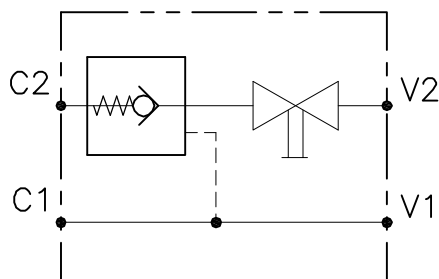
Min/max flow-rate
Max peak pressure
Material
Tightening torque

CODICE DI ORDINAZIONE HOW TO ORDER

003 393 0 0 0 0 B

| Numero valvola / Valve number | Orifice diameter |
|-------------------------------|------------------|
| 003 393 000 0B | HOLE Ø 0.8 |
| 003 393 000 0C | HOLE Ø 1 |
| 003 393 000 0D | HOLE Ø 1.25 |
| 003 393 000 0E | HOLE Ø 1.5 |
| 003 393 000 0F | HOLE Ø 1.75 |
| 003 393 000 0G | HOLE Ø 2 |
| 003 393 000 0H | HOLE Ø 2.5 |
| 003 393 000 0I | HOLE Ø 2.7 |

VRC-SE-OIL-...-D-S

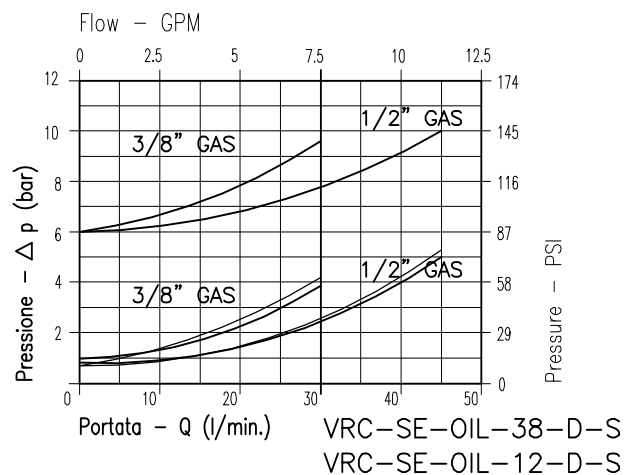
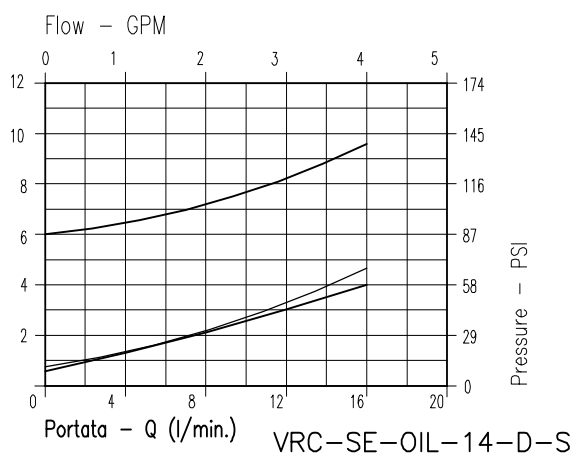


CARATTERISTICHE

| | |
|--------------------------|---|
| Luce nominale | DN 8 |
| Portata min/max | vedi diagramma / see performance graph |
| Pressione di lavoro max. | 350 bar - 5075 PSI |
| Rapporto di pilotaggio | 5.3 : 1 |
| Temperatura ambiente | -30°C + 50°C |
| Temperatura olio | -30°C + 80°C |
| Filtraggio consigliato | 50 micron |

PERFORMANCE

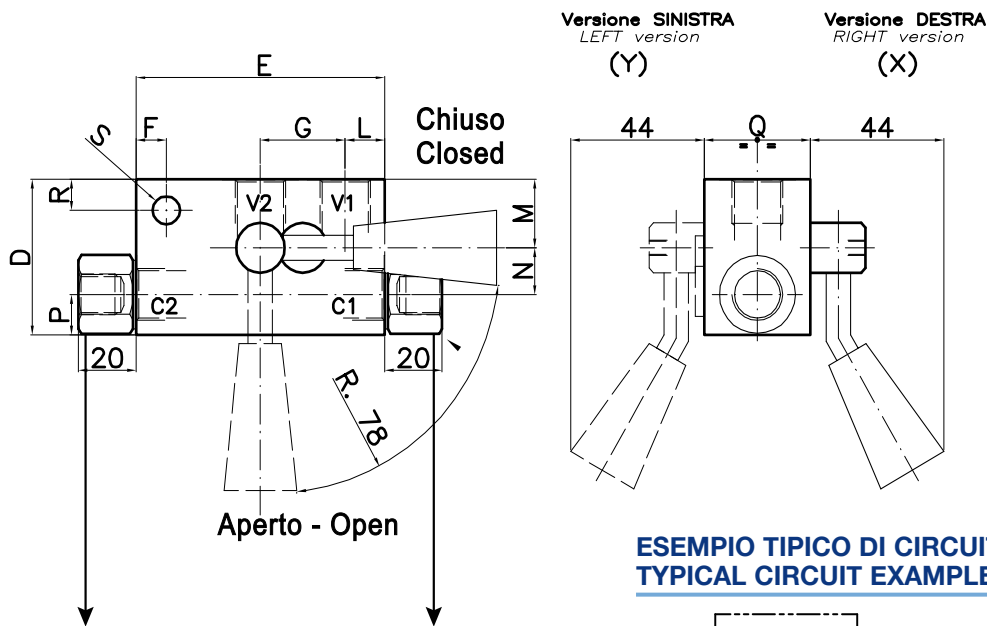
| |
|------------------------|
| Rated size |
| Min/max flow-rate |
| Max working pressure |
| Pilot ratio |
| Room temperature |
| Oil temperature |
| Recommended filtration |



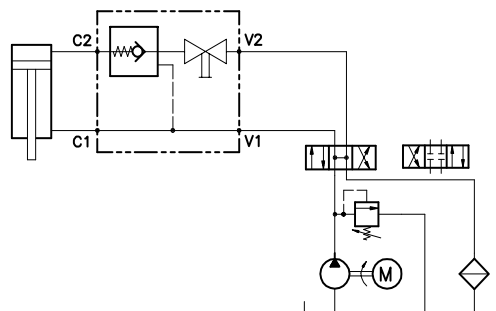
- 8Bar Flusso libero (free flow)
- 1Bar Flusso libero (free flow)
- Flusso pilotato (piloted flow)

Viscosità olio 46 cSt a 50°C
Oil viscosity 46 cSt at 50°C

VALVOLA DI BLOCCO PILOTATA CON RUBINETTO DI SICUREZZA
PILOT OPERATED CHECK VALVE WITH MANUAL SHUT-OFF



ESEMPIO TIPICO DI CIRCUITO
TYPICAL CIRCUIT EXAMPLE



DIMENSIONI
DIMENSIONS

| NUMERO VALVOLA VALVE NUMBER | D | E | F | G | L | M | N | P | Q | R | S | PORTATA FLOW-RATE L/min | ATTACCHI PORT SIZE V-C |
|-----------------------------------|----|----|----|----|----|----|----|----|----|----|---|-------------------------------|------------------------------|
| 341 | 50 | 82 | 10 | 28 | 13 | 22 | 15 | 13 | 35 | 10 | 9 | 16 | 3/8"-1/4" |
| 297 | 50 | 82 | 10 | 28 | 13 | 30 | 20 | 13 | 35 | 10 | 9 | 35 | 3/8"-3/8" |
| 348 | 65 | 90 | 10 | 35 | 15 | 30 | 20 | 15 | 35 | 10 | 9 | 45 | 1/2"-1/2" |

CODICE DI ORDINAZIONE
HOW TO ORDER

